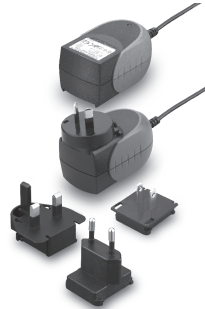


TRISRA

S E R I E S

15W SWITCHING ADAPTER



Features

- Universal Input Range 90-264VAC
- Meets EN55022 Class B
- Continuous Short Circuit Protection
- Interchangeable AC Plugs
- Over Voltage Protection
- CEC Level IV Compliant (Output Cable Length ≤ 1800mm)

Ordering information

TR15RAxxx	xx	E	xx	xx	xx	xx	xx	
Model No.	DC Plug Type	DC Cable Length and Type	Color of Overmold Case					
	*Please see Page 235 for more detailed descriptions	01: 1200mm 02: 1500mm 03: 1800mm 11: 1200mm with Ferrite Core 12: 1500mm with Ferrite Core 13: 1800mm with Ferrite Core * 20AWG / 18AWG	01: Black 02: Gray 03: Black 11: Purple 12: Orange 13: Orange					

MODEL	OUTPUT VOLTAGE	MAX. LOAD	MIN. LOAD	RIPPLE & NOISE	VOLTAGE ACCURACY	LINE REGULATION	LOAD REGULATION	SWITCHING FREQUENCY	%EFF
TR15RA050	5V	2.0A	0 A	1%	± 3%	± 1%	± 4%	80KHz Typ.	70% min.
TR15RA060	6V	1.7A	0 A	1%	± 2%	± 1%	± 3%	80KHz Typ.	71% min.
TR15RA090	9V	1.4A	0 A	1%	± 2%	± 1%	± 2%	80KHz Typ.	76% min.
TR15RA120	12V	1.1A	0 A	1%	± 2%	± 1%	± 2%	80KHz Typ.	78% min.
TR15RA150	15 V	1.0A	0 A	1%	± 2%	± 1%	± 2%	80KHz Typ.	77% min.
TR15RA180	18V	830mA	0 A	1%	± 2%	± 1%	± 2%	80KHz Typ.	79% min.
TR15RA240	24V	625mA	0 A	1%	± 2%	± 1%	± 2%	80KHz Typ.	80% min.

Specifications

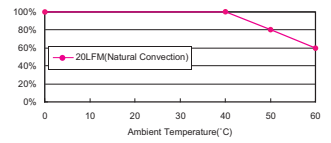
INPUT SPECIFICATIONS:
 Voltage 90 ~ 264Vac
 Frequency 47 to 63Hz
 Input Current 0.4A max.
 Inrush Current 50A max. @940Vac
 Conducted EMI EN55022 Class B
 Isolation Input to output = 4.2kVDC
 Leakage Current 0.25mA max

OUTPUT SPECIFICATIONS:
 Hold-up Time 10ms typ. @115Vac
 Short Circuit Protection Continuous (Auto Recovery)
 Over Voltage Protection Yes

ENVIRONMENTAL CHARACTERISTICS:
 Operating Temperature 0 ~ 40°C
 Storage Temperature -20 ~ 85°C
 Cooling Natural Convection

MECHANICAL CHARACTERISTICS:
 Dimensions 80.60 x 47.90 x 43.30mm (3.173 x 1.885 x 1.705 inches)
 Weight 150g (0.33Pounds)

TR15RA Series Derating Curve

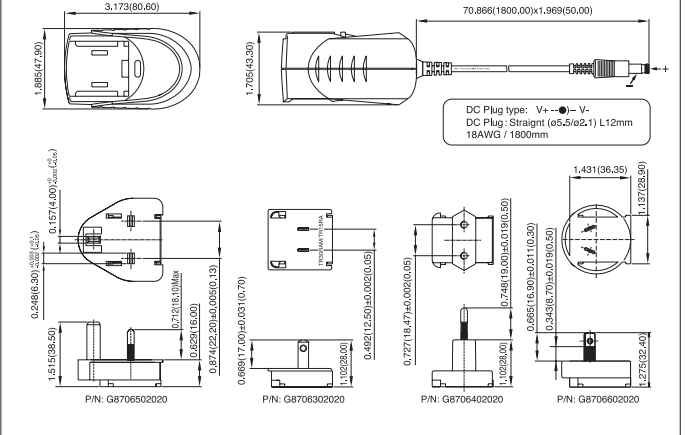


NOTE:

1. Voltage setpoint at 60% load.
2. Add a 0.1µF ceramic capacitor and a 10µF E.L. capacitor to output for Ripple & Noise measuring @20MHz BW.
3. Line regulation measured from 100Vac to 240Vac, full load.
4. Load regulation measured from 60% to full load and from 60% to 20% load [60% +/- 40% load].
5. *Various TR Series adapters are PSE certified. PSE certification alone is not sufficient for importation into Japan. A valid PSE mark must contain the name of the importer as shown in the example below. If PSE mark is required, the name of the registered importer must be supplied to Cincon on order placement. Product labels will not contain PSE mark if importer name is not supplied. Consult factory or local representative for details.

Mechanical Specification

All Dimensions in: Inches (mm)
 Tolerance: Inches: xxxxx ±0.02
 Millimeters: xxx ±0.5



Typical at 25°C, nominal line and 75% load, unless otherwise specified

TRISRA