

110W Universal Industrial Series

PSA-110 Quad Output L-Bracket



Features

- Integral EMI filter
- Low profile design
- Cover Available
- Over voltage protection

Applications

- Network hubs
- Low profile racks
- Computer peripherals
- Business machines

Safety Approvals

- UL 1950 [E127643]
- TUV EN 60950 IEC 950 [R9371674]
- CSA 22.2 234, [LR56927-115]

Mechanical Characteristics

- Dimensions:
- Length: 172.7mm (6.81in.)
 - Height: 43.6mm (1.7in.)
 - Width: 93.5mm (3.7in.)
 - Weight: 0.72kgm (1.6lb)

Output Specifications

Model	DC Output Voltage	Load				Ripple (1) P-P	Total Tolerance
		Min.	Convection	30cfm	Peak		
PSA-110-401	+5V	2A	7A	9A		50mV	+2%
	+12V	1A	3A	3.5A	5A	100mV	+6%
	-5V	0A	0.5A	0.75A	1A	100mV	+6%
	-12V	0A	0.5A	0.75A	1A	100mV	+6%
PSA-110-402	+5V	2A	7A	9A		50mV	+2%
	+12V	1A	3A	3.5A	5A	100mV	+6%
	+12V	0A	0.5A	0.75A	1A	100mV	+6%
	-12V	0A	0.5A	0.75A	1A	100mV	+6%
PSA-110-403	+5V	2A	7A	9A		50mV	+2%
	+12V	0A	0.5A	0.75A	1A	100mV	+6%
	+24V	0.5A	1A	1.75A	2.5A	240mV	+6%
	-12V	0A	0.5A	0.75A	1A	100mV	+6%

(1) Measured by using a 12 inch twisted pair terminated with a 10mfd capacitor and 0.1mfd ceramic capacitor in parallel with primary and secondary ground holes connected together.

(2) Maximum continuous output power shall not exceed 80 watts convection or 110 watts fan cooled.

ELCOT

ISO 9001 • BABT • MITI
 Facility Approvals

110W Universal Industrial Series PSA-110 Quad Output L-Bracket

Characteristics

AC input Voltage
 90VAC-264VAC

AC Frequency
 47 to 63Hz

AC Input Current
 3A maximum (115V)
 1.5A maximum (230V)

AC Leakage Current (Cold)
 0.75mA (max.)
 (240VAC, 50Hz)

AC Inrush Current
 25A at 115VAC
 50A at 240VAC

Efficiency
 70% typical at full load, 120VAC

Hold-up Time
 16msec. at full load, 120VAC

Switching Frequency
 50KHz, typical

Overvoltage Protection
 5.5 to 6.5V (+5 Output)

Overcurrent Protection
 Short circuit protected
 Auto-Restart

Operation Temperature
 0 to +50°C

Storage Temperature
 -40 to +85°C

MTBF
 Calculated
 Greater than 100,000 hours,
 full load, 25°C
 (MIL-HDBK-217)

EMI
 FCC Class A
 VDE 0871 Class A
 (Class B available)

Mating Connectors
 AC: Molex 09-50-3051
 DC: Molex 09-50-3121



ENTERPRISE CO., LTD.

16, Lane 530, Chung Cheng N. Rd.
 Sanchung City, Taipei
 Taiwan 24103, R.O.C.
 Phone: 886-2-988-2126
 886-2-980-5255
 Fax: 886-2-981-7086
 886-2-983-3222

PHIHONG USA
 CORPORATION

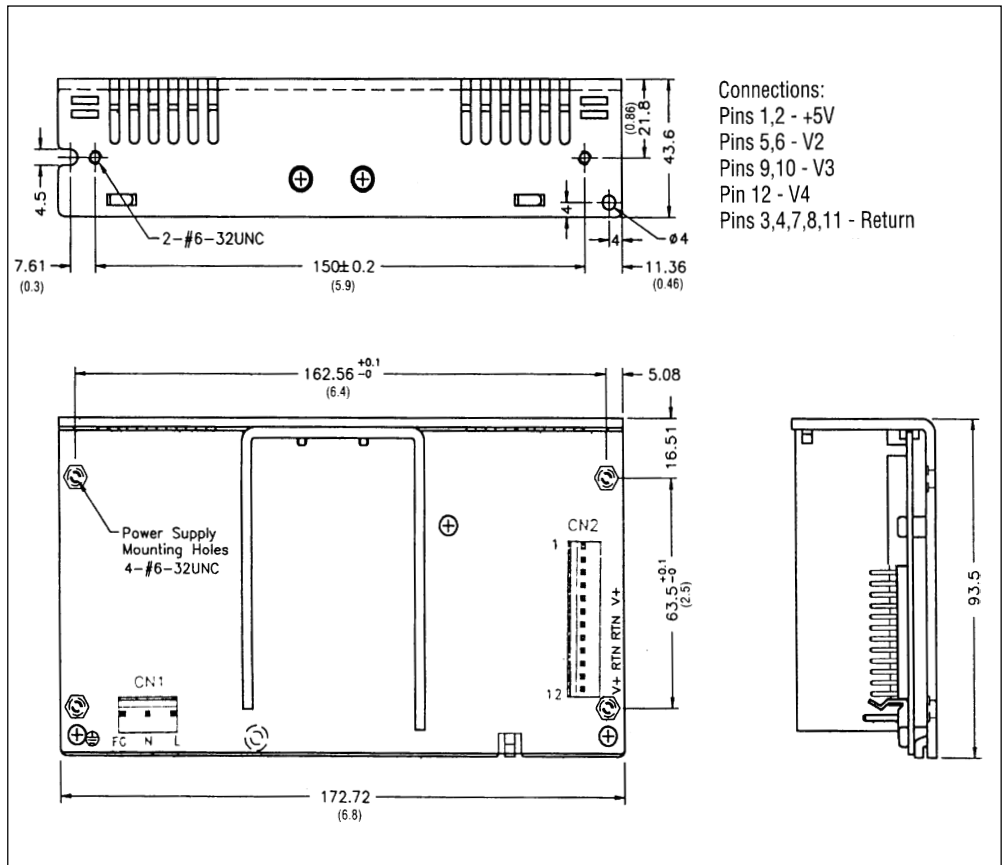
U.S. Headquarters:
 48607 Warm Springs Blvd.
 Fremont, CA 94539
 Phone: (510) 445-0100
 Fax: (510) 445-1678

Email: usasales@phihongusa.com
 Internet: <http://www.phihongusa.com>

Eastern Office:
 3005 Brodhead Road
 Bethlehem, PA 18017
 Phone: (610) 866-9911
 Fax: (610) 866-9920

Southwestern Office:
 3325 Cochran St., Suite 200
 Simi Valley, CA 93063
 Phone: (805) 520-8177
 Fax: (805) 520-3907

Dimension Diagram Unit: mm (inch)



110 Q/704