

# 110W Universal Industrial Series

## PSA-110 Single Output L-Bracket



GREEN  
N  
O  
T  
T  
H  
E

### Features

- Integral EMI filter
- 100% Burn-In
- Low Profile Design
- Over Voltage Protection

### Applications

- Network Hubs
- Computer Peripherals
- Low Profile Racks
- Business Machines

### Safety Approvals

- UL 1950 [E127643]
- CSA 22.2 234, [LR56927-115]
- TUV EN 60950 IEC 950 [R9371674]

### Mechanical Characteristics

- Dimensions:
- Length: 172.7mm (6.81in)
  - Width: 93.5mm (3.7in)
  - Height: 43.6mm (1.7in)
  - Weight: 0.72kgm (1.6lb)

### Output Specifications

Model	DC Output Voltage	Load			Ripple (1) P-P	Regulation	
		Min.	Convection	30cfm		Line	Load
PSA-110-105	+5V	1A	16A	22A	50mV	+2%	+2%
PSA-110-112	+12V	0A	7A	9A	120mV	+2%	+2%
PSA-110-115	+15V	0A	5A	7.3A	150mV	+2%	+2%
PSA-110-124	+24V	0A	3.3A	4.5A	240mV	+2%	+2%

(1) Measured by using a 12 inch twisted pair terminated with a 10mfd capacitor and 0.1mfd ceramic capacitor in parallel with primary and secondary ground holes connected together.

ISO 9001 · BABT · MITI  
Facility Approvals



**ENTERPRISE CO., LTD.**

16, Lane 530, Chung Cheng N. Rd.  
Sanchung City, Taipei  
Taiwan 24103, R.O.C.  
Phone: 886-2-988-2126  
886-2-980-5255  
Fax: 886-2-981-7086  
886-2-983-3222

**PHIHONG USA**  
CORPORATION

*U.S. Headquarters:*  
48607 Warm Springs Blvd.  
Fremont, CA 94539  
Phone: (510) 445-0100  
Fax: (510) 445-1678  
Email: [usasales@phihongusa.com](mailto:usasales@phihongusa.com)  
Internet: <http://www.phihongusa.com>

*Eastern Office:*  
3005 Brodhead Road  
Bethlehem, PA 18017  
Phone: (610) 866-9911  
Fax: (610) 866-9920

*Southwestern Office:*  
3325 Cochran St., Suite 200  
Simi Valley, CA 93063  
Phone: (805) 520-8177  
Fax: (805) 520-3907

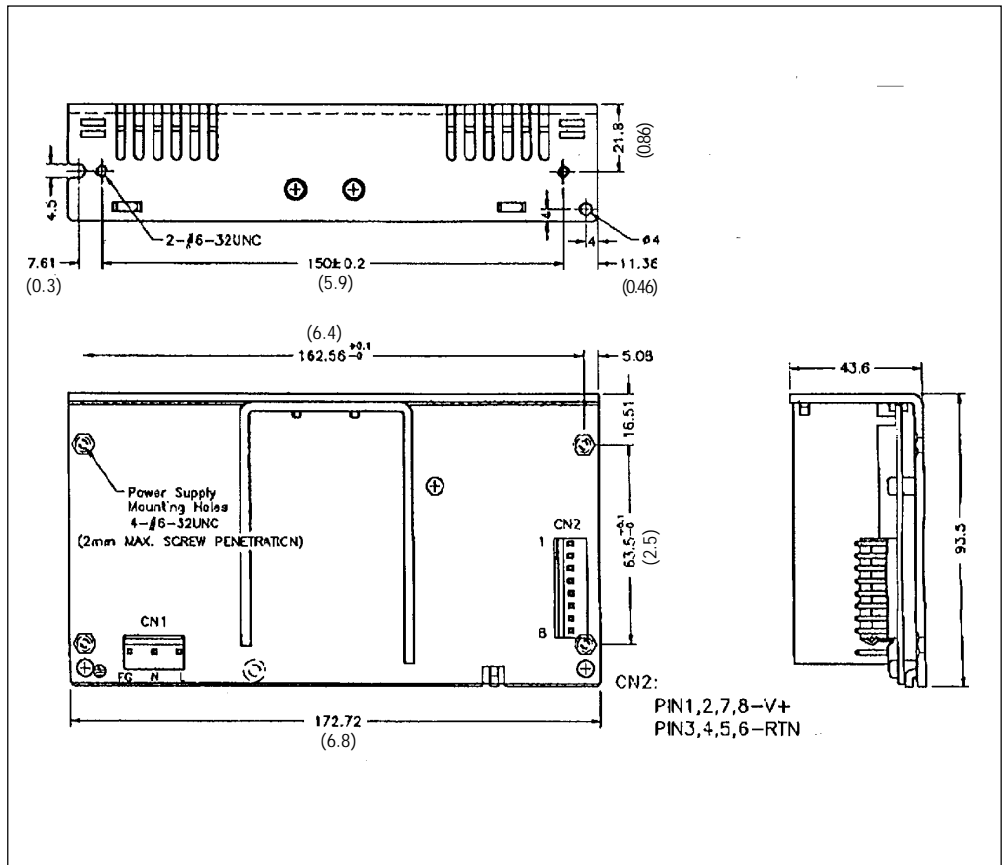
# 110W Universal Industrial Series

## PSA-110 Single Output L-Bracket

### Characteristics

- |   |   |
|---|---|
| <b>AC input Voltage</b><br>90VAC-260VAC                                 | <b>Overcurrent Protection</b><br>Short circuit protected<br>Auto-Restart                      |
| <b>AC Frequency</b><br>47 to 63Hz                                       | <b>Operation Temperature</b><br>0 to +50°C  |
| <b>AC Input Current</b><br>3A maximum                                   | <b>Storage Temperature</b><br>-40 to +85°C  |
| <b>AC Leakage Current (Cold)</b><br>0.75mA (max.)<br>(240VAC, 50Hz)     | <b>MTBF</b><br>Calculated<br>Greater than 100,000 hours,<br>full load, 25°C<br>(MIL-HDBK-217) |
| <b>AC Inrush Current (Cold Start)</b><br>25A at 115VAC<br>50A at 240VAC | <b>EMI</b><br>FCC Class B<br>VFG 243/1991   |
| <b>Efficiency</b><br>70% typical at full load, 120VAC                   | <b>Mating Connectors</b><br>AC: Molex 09-50-3051<br>DC: Molex 09-50-3081                      |
| <b>Hold-up Time</b><br>16msec. at full load, 120VAC                     |   |
| <b>Switching Frequency</b><br>50KHz, typical                            |   |
| <b>Overvoltage Protection</b><br>All models                             |   |

### Dimension Diagram Unit: mm (inch)



110 S/704