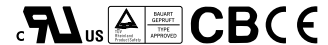




■ Features :

- Isolated output & GND for CH1,CH2 & CH3,CH4
- Universal AC input/Full range
- Protections: Short circuit / Overload / Over voltage
- LED indicator for power on
- 100% full load burn-in test
- Fixed switching frequency at 67KHz
- 2 years warranty

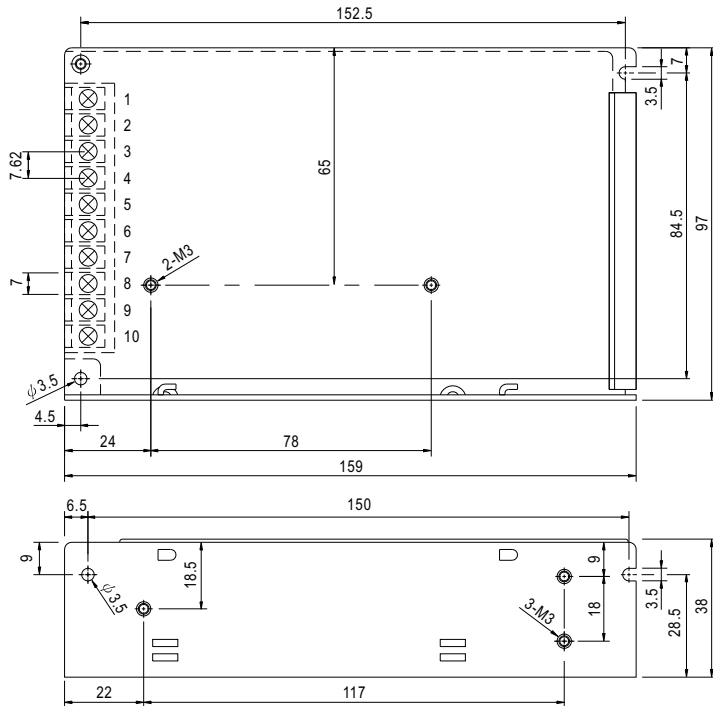


**SPECIFICATION**

| MODEL                 | IQ-60D   |   |          |              | IQ-60F     |                   |          |          |          |
|-----------------------|--|---|----------|--------------|------------|-------------------|----------|----------|----------|
| OUTPUT                | OUTPUT   | CH1   | CH2      | CH3          | CH4        | CH1               | CH2      | CH3      | CH4      |
|                       | DC VOLTAGE   | 5V  | 12V      | -12V         | 24V        | 5V                | 15V      | -15V     | 24V      |
|                       | RATED CURRENT  | 3A  | 0.5A     | 0.5A         | 1.3A       | 3A                | 0.5A     | 0.5A     | 1.25A    |
|                       | CURRENT RANGE  | 0.5 ~ 3A  | 0.1 ~ 1A | 0.1 ~ 1A     | 0.2 ~ 2A   | 0.5 ~ 3A          | 0.1 ~ 1A | 0.1 ~ 1A | 0.2 ~ 2A |
|                       | RATED POWER  | 58.2W   |          |              |            | 60W               |          |          |          |
|                       | PEAK LOAD (3sec.) Note.4   | 70W   |          |              |            |                   |          |          |          |
|                       | RIPPLE & NOISE (max.) Note.2   | 80mVp-p   | 120mVp-p | 120mVp-p     | 240mVp-p   | 80mVp-p           | 150mVp-p | 150mVp-p | 240mVp-p |
|                       | VOLTAGE ADJ. RANGE   | CH1 : 4.75 ~ 5.5V   |          |              |            | CH1 : 4.75 ~ 5.5V |          |          |          |
|                       | VOLTAGE TOLERANCE Note.3   | ±3.0%   | ±8.0%    | ±8.0%        | ±8.0%      | ±3.0%             | ±8.0%    | ±8.0%    | ±8.0%    |
|                       | LINE REGULATION  | ±1.0%   | ±2.0%    | ±2.0%        | ±2.0%      | ±1.0%             | ±2.0%    | ±2.0%    | ±2.0%    |
| LOAD REGULATION       | ±2.0%  | ±5.0%   | ±5.0%    | ±5.0%        | ±2.0%      | ±5.0%             | ±5.0%    | ±5.0%    |          |
| SETUP, RISE TIME      | 300ms, 20ms/230VAC      800ms, 20ms/115VAC at full load  |   |          |              |            |                   |          |          |          |
| HOLD UP TIME (Typ.)   | 80ms/230VAC      18ms/115VAC at full load  |   |          |              |            |                   |          |          |          |
| INPUT                 | VOLTAGE RANGE  | 90 ~ 264VAC   |          | 127 ~ 370VDC |            |                   |          |          |          |
|                       | FREQUENCY RANGE  | 47 ~ 63Hz   |          |              |            |                   |          |          |          |
|                       | EFFICIENCY (Typ.)  | 76%   |          |              |            |                   |          |          |          |
|                       | AC CURRENT (Typ.)  | 1.8A/115VAC   |          | 0.9A/230VAC  |            |                   |          |          |          |
|                       | INRUSH CURRENT (Typ.)  | COLD START 20A/115VAC   |          |              | 40A/230VAC |                   |          |          |          |
| LEAKAGE CURRENT       | <1mA/ 240VAC   |   |          |              |            |                   |          |          |          |
| PROTECTION            | OVERLOAD   | 70 ~ 90W rated output power<br>Protection type : Hiccup mode, recovers automatically after fault condition is removed |          |              |            |                   |          |          |          |
|                       | OVER VOLTAGE   | 5V: 5.75 ~ 6.75V<br>Protection type : Hiccup mode, recovers automatically after fault condition is removed            |          |              |            |                   |          |          |          |
| ENVIRONMENT           | WORKING TEMP.  | -10 ~ +60°C (Refer to output load derating curve)   |          |              |            |                   |          |          |          |
|                       | WORKING HUMIDITY   | 20 ~ 90% RH non-condensing  |          |              |            |                   |          |          |          |
|                       | STORAGE TEMP., HUMIDITY  | -20 ~ +85°C, 10 ~ 95% RH  |          |              |            |                   |          |          |          |
|                       | TEMP. COEFFICIENT  | ±0.03%/°C (0 ~ 50°C) on +5V output  |          |              |            |                   |          |          |          |
| VIBRATION             | 10 ~ 500Hz, 2G 10min./1cycle, period for 60min. each along X, Y, Z axes  |   |          |              |            |                   |          |          |          |
| SAFETY & EMC (Note 5) | SAFETY STANDARDS   | UL60950-1, TUV EN60950-1 approved   |          |              |            |                   |          |          |          |
|                       | WITHSTAND VOLTAGE  | I/P-O/P:3KVAC I/P-FG:1.5KVAC O/P-FG:0.5KVAC   |          |              |            |                   |          |          |          |
|                       | ISOLATION RESISTANCE   | I/P-O/P, I/P-FG, O/P-FG:100M Ohms / 500VDC / 25°C / 70% RH  |          |              |            |                   |          |          |          |
|                       | EMI CONDUCTION & RADIATION   | Compliance to EN55022 (CISPR22) Class B   |          |              |            |                   |          |          |          |
|                       | HARMONIC CURRENT   | Compliance to EN61000-3-2,-3  |          |              |            |                   |          |          |          |
| EMS IMMUNITY          | Compliance to EN61000-4-2,3,4,5,6,8,11, ENV50204, EN55024, light industry level, criteria A  |   |          |              |            |                   |          |          |          |
| OTHERS                | MTBF   | 313K hrs min. MIL-HDBK-217F (25°C)  |          |              |            |                   |          |          |          |
|                       | DIMENSION  | 159*97*38mm (L*W*H)   |          |              |            |                   |          |          |          |
|                       | PACKING  | 0.55Kg, 24pcs/14.2Kg/0.75CUFT   |          |              |            |                   |          |          |          |
| NOTE                  | <p>1. All parameters NOT specially mentioned are measured at 230VAC input, rated load and 25°C of ambient temperature.</p> <p>2. Ripple &amp; noise are measured at 20MHz of bandwidth by using a 12" twisted pair-wire terminated with a 0.1uf &amp; 47uf parallel capacitor.</p> <p>3. Tolerance : includes set up tolerance, line regulation and load regulation.</p> <p>4. 5% Duty cycle maximum within every 1min. Average output power should not exceed the rated power.</p> <p>5. The power supply is considered a component which will be installed into a final equipment. The final equipment must be re-confirmed that it still meets EMC directives. For guidance on how to perform these EMC tests, please refer to "EMI testing of component power supplies."<br/>(as available on <a href="http://www.meanwell.com">http://www.meanwell.com</a>)</p> |   |          |              |            |                   |          |          |          |

**Mechanical Specification**

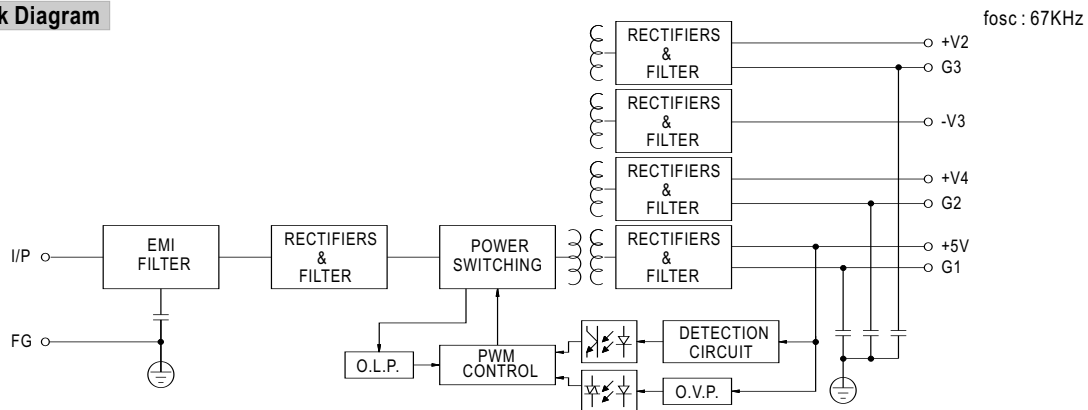
Case No. 901 Unit:mm



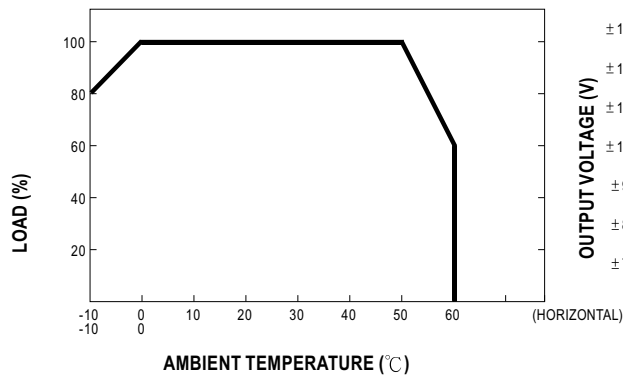
**Terminal Pin No. Assignment**

| Pin No. | Assignment    | Pin No. | Assignment    |
|---------|---------------|---------|---------------|
| 1       | AC/L          | 6       | DC OUTPUT +V2 |
| 2       | AC/N          | 7       | DC OUTPUT G4  |
| 3       | FG $\perp$    | 8       | DC OUTPUT +V4 |
| 4       | DC OUTPUT -V3 | 9       | DC OUTPUT G1  |
| 5       | DC OUTPUT COM | 10      | DC OUTPUT +5V |

**Block Diagram**



**Derating Curve**



**Static Characteristics**

