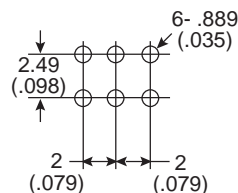
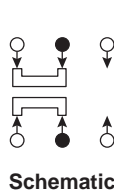
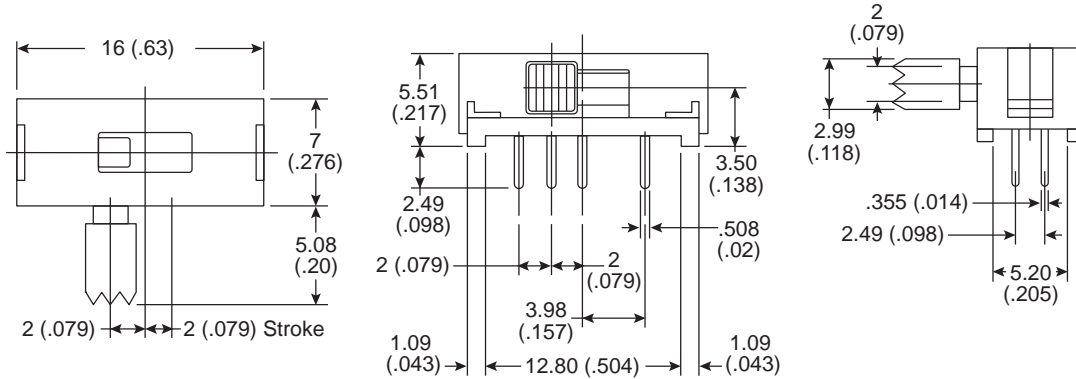
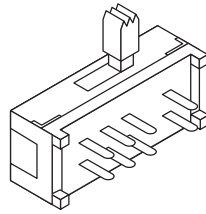
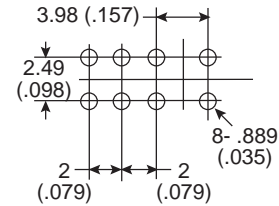
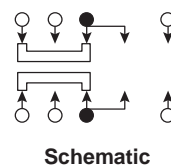


Dimensions: mm (In.)



102-1501



102-1502

**Electrical Specifications:**

- Rating: .3A/30VDC
- Contact Resistance: 100mΩ max.
- Insulation Resistance: > 100MΩ @ 500VDC
- Dielectric Strength: 500VAC for 1 Minute
- Electrical Life: 10,00 Cycles

**Mechanical Specifications:**

- Mechanical Life: 30,000 Cycles
- Operating Force: 200±150gF

Mouser Stock No.	Type	Circuit
102-1501	DPDT	On-On
102-1502	DPDT	On-None-On

**Soldering Process:**

- Temperature: 255°C max. 5 seconds

**Slide Switches**  
102-1501, 102-1502

