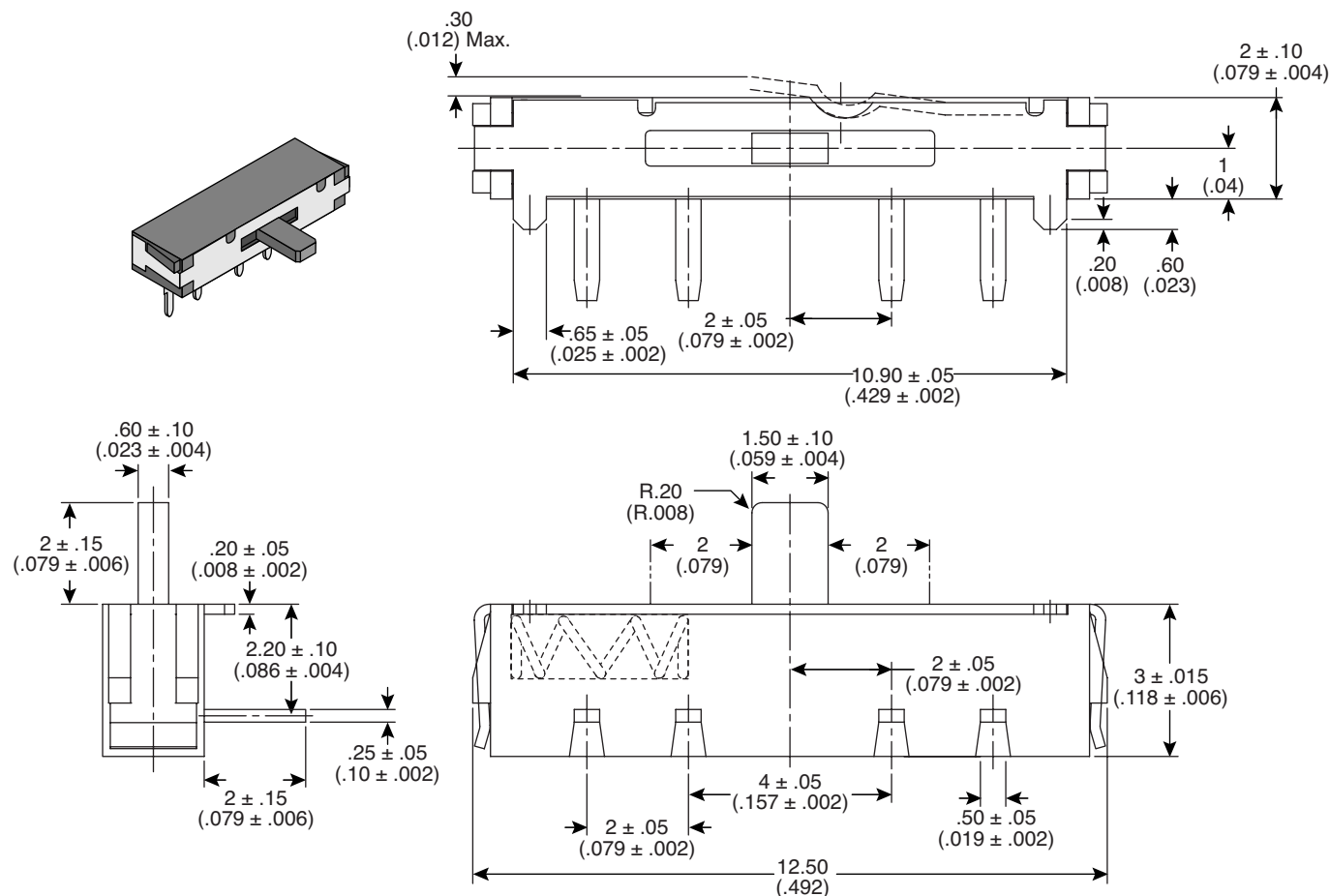


A 3D perspective view of a rectangular component, likely a microchip or connector. It has a central slot and a protruding tab on one side. The component is shown in a light gray color with black outlines.



- Rating: Non-Switching-100mA/50VDC
Switching-25mA/24VDC
- Contact Resistance: 100mΩ max.
- Insulation Resistance: 100MΩ min.
- Dielectric Strength: 500VAC for 1 min.

- Operating Temperature: -20°C~+70°C
- Storage Temperature: -40°C~+85°C

- RoHS Compliant and Process Compatible with 260° Solder

Mountain Switch

1-800-346-6873

Downloaded from Elcodis.com electronic components distributor