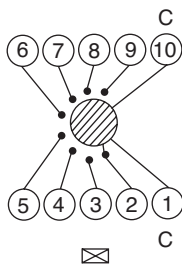
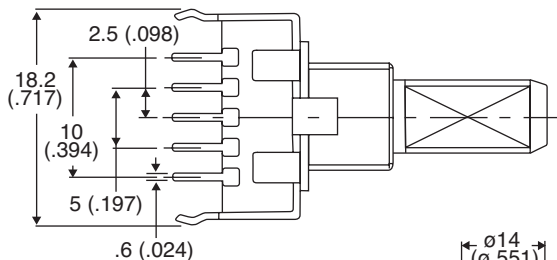
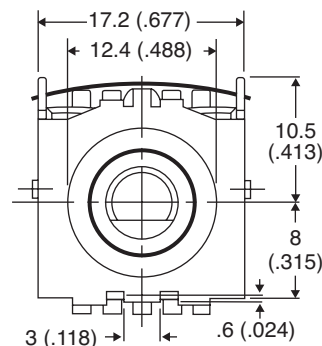
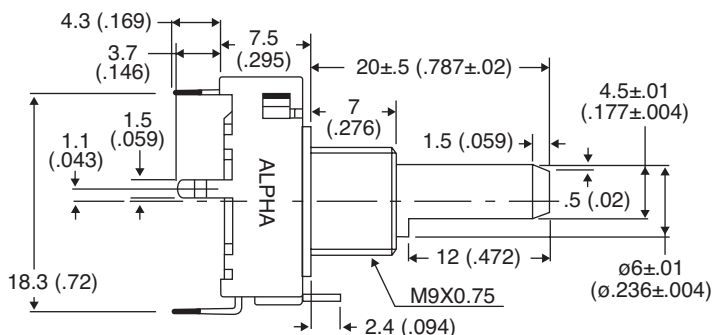




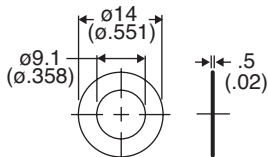
# Rotary Switch

## 105-SR1712-24NS

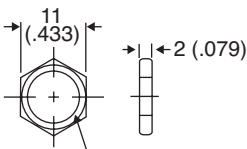
Dimensions: mm (in)



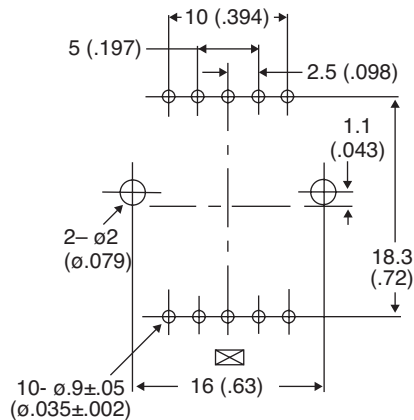
CIRCUIT DIAGRAM



WASHER 1 PCS(0.5:1)



NUT 1 PCS(0.5:1)



(⊠) STOPPER

P.C.B MOUNTING HOLE DETAIL

### Electrical Specifications:

- Rating: 0.3A/16VDC
- Contact Resistance: 50 mΩ Max.
- Insulation Resistance: 100VDC–100MΩ Min.
- Dielectric Strength: 100VAC– 1 Minute

### Mechanical Specifications:

- Rotation Torque: 200±100gf .cm
- Life Cycle: 10,000 cycles
- Timing: Non-Shorting
- Termination: PC Mount
- Poles: 2
- Positions: 4