

# C&K RBP12 Series

## 1-6 Pole Miniature Rotary Switches



### Features/Benefits

- Rotary switch for low current
- Shaft perpendicular to PCB
- Index mechanism included in thickness of switch
- Several actuation modes
- Low profile

### Typical Applications

- Medical
- Instrumentation
- Appliances

### Mechanical Data

Max. number of banks	1
Operating torque	2.5 Ncm ± 25% (1 pole)
Stop strength	> 40 Ncm
End stop	With/without or mobile
Contact material	Silver, Gold
Insulating material	Thermoplastic

**NOTE:** For the latest information regarding RoHS compliance, please go to: [www.ittcannon.com/rohs](http://www.ittcannon.com/rohs).

**NOTE:** Specifications and materials listed above are for switches with standard options. For information on specific and custom switches, consult Customer Service Center.

### Electrical Data

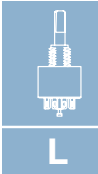
	Silver (S)	Gold (G)
Switching mode	MBB-BBM	MBB-BBM
	Make Before Break, Break Before Make	
Max. switching power	5 VA (resistive)	0.5 VA (resistive)
Max. switching current	130 mA	20 mA
Max. carrying current	3 A	3 A
Contact resistance	< 15 m ohms	< 25 m ohms
Dielectric strength	between contacts 1000 V	1000 V
	or contacts and ground 1000 V	1000 V
Nominal voltage	150 V rms	150 V rms
Number of operations	15,000	20,000
Insulation resistance between contacts and contacts and frame (500 Vcc)	> 5 x 10 <sup>9</sup> ohms	> 5 x 10 <sup>9</sup> ohms

### Environmental data

Storage temperature	- 25°C to + 70°C	- 25°C to + 85°C
Salt spray	NA	48 H

### Further data

Solderability	Hand: 350°C/5 s	Wave: 260°C/5 s max.
Cleaning	Cleaning of modules prohibited	



Rotary

### Build-A-Switch

To order, simply select desired option from each category and place in the appropriate box. Available options are shown and described on pages L-19 thru L-21. For additional options not shown in catalog, consult Customer Service Center.

<p><b>Designation</b> _____</p> <p><b>RBP12</b></p> <p><b>Switch Function</b> _____</p> <p><b>112S</b> SP, 30° Index, 12 pos. no stop</p> <p><b>103B03</b> SP, 30° Index, 3 pos.</p> <p><b>105B05</b> SP, 30° Index, 5 pos.</p> <p><b>107B07</b> SP, 30° Index, 7 pos.</p> <p><b>108B08</b> SP, 30° Index, 8 pos.</p> <p><b>110B10</b> SP, 30° Index, 10 pos.</p> <p><b>112B12</b> SP, 30° Index, 12 pos.</p> <p><b>206S</b> DP, 30° Index, 6 pos. no stop</p> <p><b>202B02</b> DP, 30° Index, 2 pos.</p> <p><b>203B03</b> DP, 30° Index, 3 pos.</p> <p><b>205B05</b> DP, 30° Index, 5 pos.</p> <p><b>304B04</b> 3P, 30° Index, 4 pos.</p> <p><b>403B03</b> 4P, 30° Index, 3 pos.</p> <p><b>602B02</b> 6P, 30° Index, 2 pos.</p>	<p><b>Switching Mode</b> _____</p> <p><b>N</b> Non-shorting BBM (break-before-make)</p> <p><b>C</b> Shorting, MBB (make-before-break)</p>	<p><b>Actuator</b> _____</p> <p><b>F</b> Screwdriver slot*</p> <p><b>AD</b> Plastic shaft, &lt;20mm (.787)*</p> <p><b>S</b> Plastic shaft, 6mm (.236)*</p> <p><b>M</b> Thumbwheel</p>	<p><b>Option</b> _____</p> <p><b>(NONE)</b></p> <p><b>P</b> Lateral PCB adaptation</p> <p><b>Contact Material</b> _____</p> <p><b>S</b> Silver</p> <p><b>G</b> Gold</p>
--	---	---	---

\*Option: Metallic shaft available by request

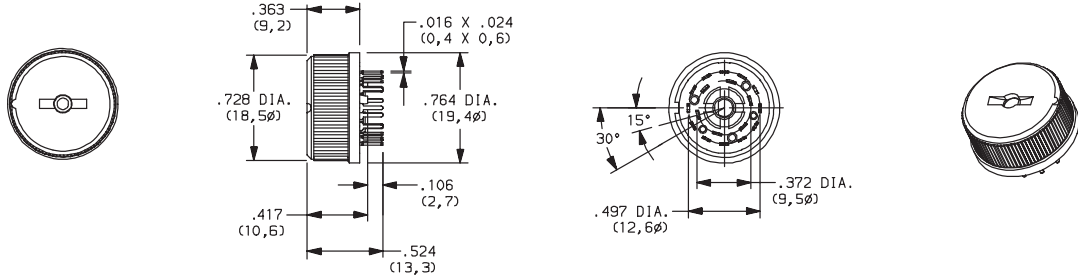


Dimensions are shown: Inch (mm)  
Specifications and dimensions subject to change

# C&K RBP12 Series 1-6 Pole Miniature Rotary Switches

DESIGNATION

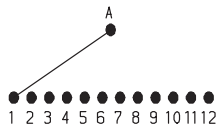
**RBP12**



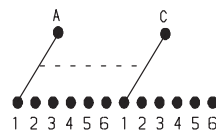
SWITCH FUNCTION

30° INDEXING		
NO. POLES	MODEL NO.	SWITCH FUNCTION
SP	<b>112S</b>	12 Position No Stops
	<b>103B03</b>	3 Positions
	<b>105B05</b>	5 Positions
	<b>107B07</b>	7 Positions
	<b>108B08</b>	8 Positions
	<b>110B10</b>	10 Positions
DP	<b>112B12</b>	12 Positions
	<b>206S</b>	6 Positions No Stop
	<b>202B02</b>	3 Positions
	<b>203B03</b>	3 Positions
	<b>205B05</b>	5 Positions

SP MODELS SCHEMATIC

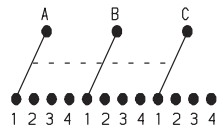


DP MODELS SCHEMATIC

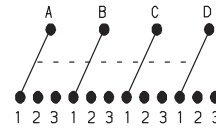


30° INDEXING		
NO. POLES	MODEL NO.	SWITCH FUNCTION
3P	<b>304B04</b>	4 Positions
4P	<b>403B03</b>	3 Positions
6P	<b>602B02</b>	2 Positions

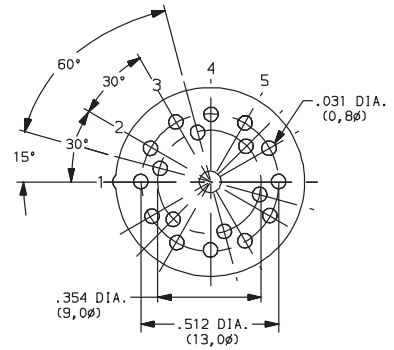
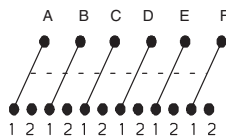
3P MODELS SCHEMATIC



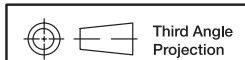
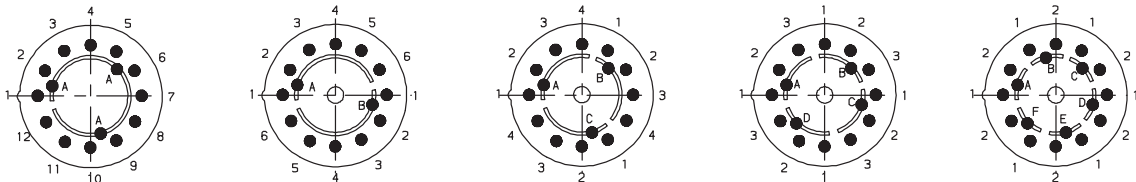
4P MODELS SCHEMATIC



6P MODELS SCHEMATIC



PC LAYOUTS



Dimensions are shown: Inch (mm)  
Specifications and dimensions subject to change

www.ittcannon.com



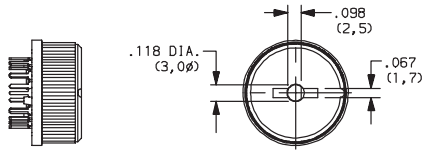
# C&K RBP12 Series 1-6 Pole Miniature Rotary Switches

## SWITCHING MODE

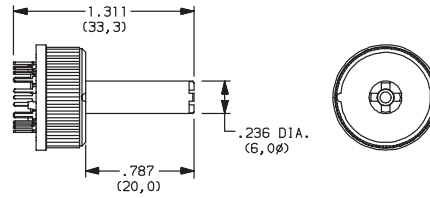
- N** NON-SHORTING, BBM (break-before-make)
- C** SHORTING, MBB (make-before-break)

## ACTUATOR

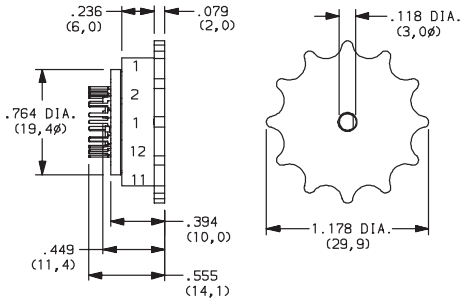
**F** SCREWDRIVER SLOT



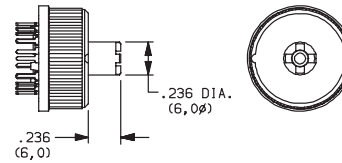
**AD** PLASTIC SHAFT, <20 mm (.787)



**M** THUMBWHEEL



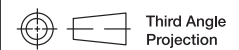
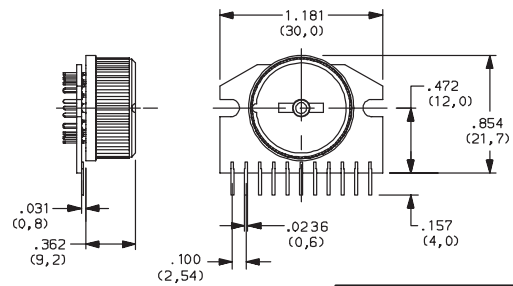
**S** PLASTIC SHAFT, 6 mm (.236)



## OPTION

**(NONE)**

**P** LATERAL PCB ADAPTATION



Dimensions are shown: Inch (mm)  
Specifications and dimensions subject to change

[www.ittcannon.com](http://www.ittcannon.com)

# C&K RBP12 Series 1-6 Pole Miniature Rotary Switches

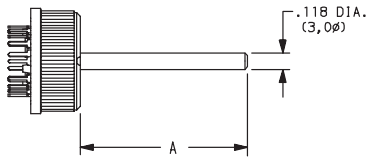
## CONTACT MATERIAL

OPTION CODE	RoHS COMPLIANT*	RoHS COMPATIBLE*	CONTACT AND TERMINAL MATERIAL	RATING	
<b>S</b>	YES	YES	SILVER	LOW LEVEL/DRY CIRCUIT	SWITCH: 130 mA, POWER: 5 VA MAXIMUM. CARRY: 3 AMPS
<b>G</b>	YES	YES	GOLD	LOW LEVEL/DRY CIRCUIT OR POWER	SWITCH: 20 mA, POWER: 0.5 VA MAXIMUM. CARRY: 3 AMPS

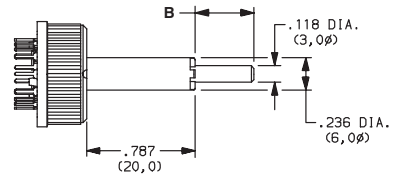
\* Note: See Technical Data section of this catalog for RoHS compliant and compatible definition and specifications.

## AVAILABLE HARDWARE

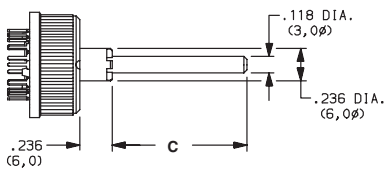
F + FA SHAFT



AD + FA SHAFT



S + FA SHAFT



PART NUMBER	"A"
Y460P0067FP	.394 (10,0)
Y460P0060FP	.590 (15,0)
Y460P0090FP	.787 (20,0)
Y460320100P	.984 (25,0)
Y460P0018FP	1.969 (50,0)
Y460P0022FP	2.756 (70,0)

**NOTE:** FA metallic shaft, consult customer service for available lengths.



Dimensions are shown: Inch (mm)  
Specifications and dimensions subject to change

[www.ittcannon.com](http://www.ittcannon.com)



Rotary