

BOURNS®

Features

- Surface mount
- 5 amp output current
- 90 % efficiency
- Pin-out compatible with Lucent's Austin Lite™
- Low profile
- Trim function
- Overcurrent protection w/ auto-restart
- Fast transient response
- High-temperature operation
- Non-isolated output
- Enable/Disable

MS5A Series – Power Module

General Information

The MS5A brings low profile and cost effectiveness to a surface mount package. Matching the footprint and pin-out of Lucent's Austin Lite™ series, the MS5A is perfect for point-of-load applications that demand a high performance power source.

Designed for use with today's latest microprocessors, ASICs, and DSPs, the MS5A provides superior transient response using Bourns Switch Power's patented V²™ architecture. This high efficiency converter includes a control pin for output enable/disable, and can also accept an external voltage across its output; an advantage when powering multiple input processors.

Input Specifications

Voltage3.0 VDC Min.
 3.3 VDC Nom.
 3.6 VDC Max.
 or4.5 VDC Min.
 5 VDC Nom.
 5.5 VDC Max.
 Current5 A (5 V input)
 5.5 A (3.3 V input)
 Remote Enable
 Open = On
 Low = Off.....0.4 VDC
 (Use open collector to pull down)

Output Specifications

Current.....5 A
 Voltage Setpoint Accuracy.....±2 %Vnom
 Voltage Trim Range.....-5 to +5 %Vnom
 Line Regulation±0.1 %Vnom
 Load Regulation±0.3 % Vnom
 (±0.2 % without remote sense)
 Dynamic Response
 0 to 6 A load
200 mV nom. ($\Delta i/\Delta t = 3 \text{ A}/\mu\text{s}$)
 19 μs nom.
 6 to 0 A load
200 mV nom. ($\Delta i/\Delta t = 3 \text{ A}/\mu\text{s}$)
 19 μs nom.
 Temperature Regulation
±0.02 %Vout/°C max.

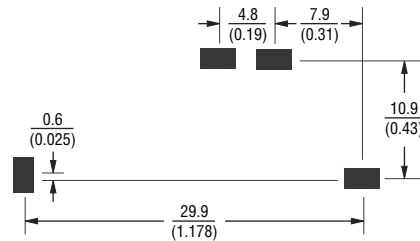
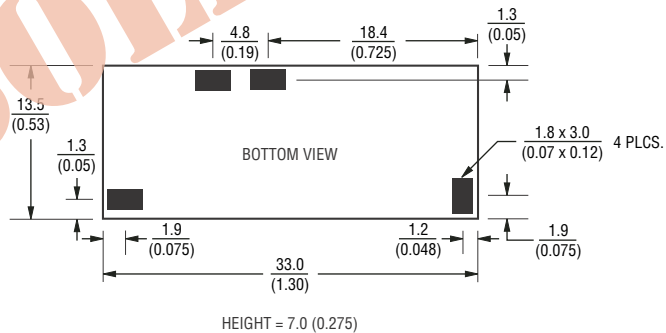
General Specifications

MBTF1,000 kWhrs nom.
 Bellcore TR332, 25 °C
 Operating Temperature.....-25 to +85 °C
 (-40 to +85 °C optional)
 Storage Temperature.....-40 to +125 °C
 Switching Frequency800 kHz nom.
 (500 kHz nom. MS5A-3S2.5 only)

Electrical Specifications

	Nominal Input (V)	Output Voltage (V)	Output Current (A)	OCP Limit (A)	Ripple Max (mV pp)	Efficiency Typ. (%)
MS5A-5S3.3	5	3.3	5	7	100	90
MS5A-5S2.5		2.5				87
MS5A-5S2.0		2.0				85
MS5A-5S1.8		1.8				82
MS5A-5S1.5		1.5				80
MS5A-3S2.5	3.3	2.5	5	7	80	91
MS5A-3S2.0		2.0				88
MS5A-3S1.8		1.8				85
MS5A-3S1.5		1.5				82
MS5A-3S1.2		1.2				

Product Dimensions

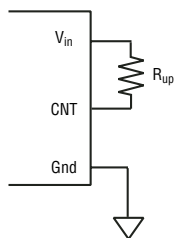


DIMENSIONS = MILLIMETERS
(INCHES)

Specifications are subject to change without notice.

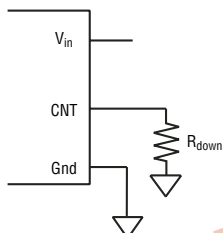
Customers should verify actual device performance in their specific applications.

Product Schematic



$$R_{up} = \frac{499 \times (V_{in} - (1 + \text{Trim \%}) \times 1.5 V_{in} - 1.5)}{1 - (V_{in} - (1 + \text{Trim \%}) \times 1.5 V_{in} - 1.5)}$$

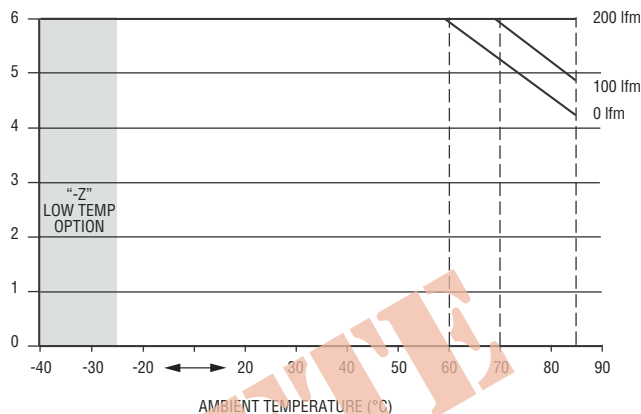
Trim % = desired percentage trim up or down



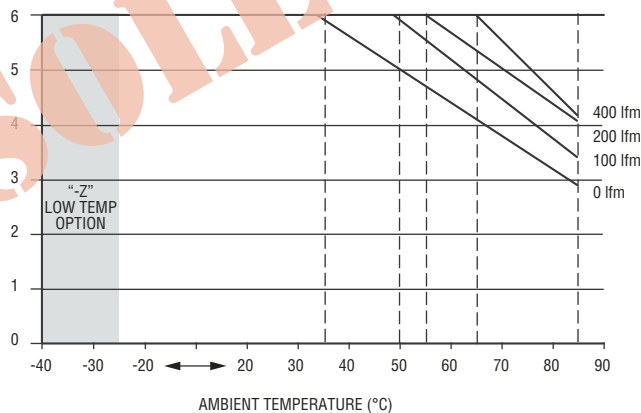
$$R_{down} = 499 \times \left(\frac{1 - \text{Trim \%}}{1 - (1 - \text{Trim \%})} \right)$$

Temperature Derating

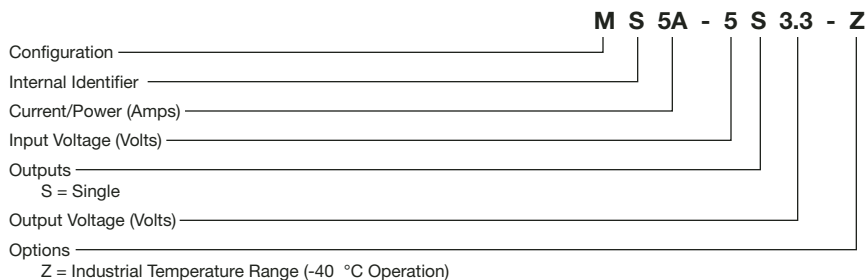
MS5A-3S2.5



MS5A-3S3.3



How to Order



Reliable Electronic Solutions

Asia-Pacific: TEL +886- (0)2 25624117 • FAX +886- (0)2 25624116

Europe: TEL +41-41 768 5555 • FAX +41-41 768 5510

The Americas: TEL +1-951 781-5500 • FAX +1-951 781-5700

www.bourns.com