

K3G310 Series

EC Fan Module

Ø 310mm Backward Curved, EC-i



■ **Material:** stator and electronics housing made of die-cast aluminum, rotor made of sheet steel (enameled in black), impeller made of sheet aluminum, galvanized sheet metal parts

■ **Technical features:** control input 0-10 VDC / PWM, rs485, ebus, alarm relay, integrated PID control, voltage supply for sensor, input for sensor 0-10 V respectively 4-20 mA, 0-10 V output for slave, PFC (passive), soft start, line undervoltage detection, phase failure detection, motor current limitation, over-temperature protected electronics and motor, locked-rotor protection.

■ **Type of protection:** IP 54

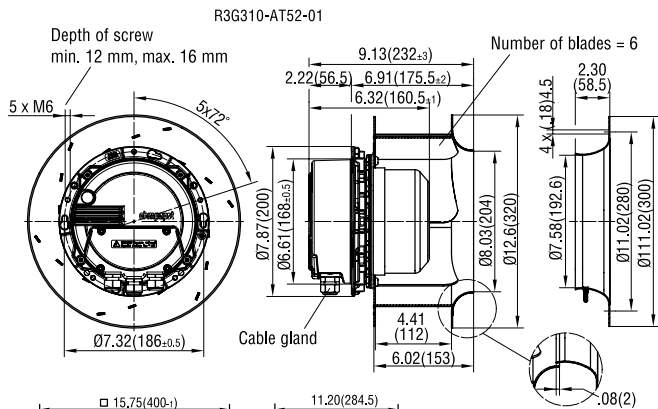
■ **Approvals:** UL, CSA, VDE, CE, CCC and GOST applications pending

■ **Mounting position:** norm is shaft horizontal or rotor on top

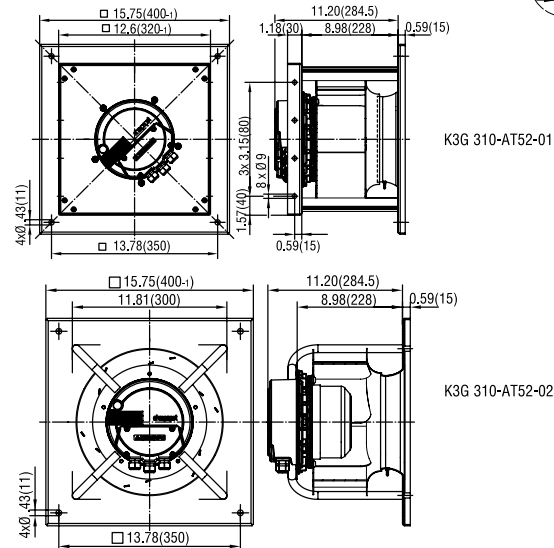
■ **Recommended inlet ring:**

R3G310	31002-2-4013
K3G310	integrated

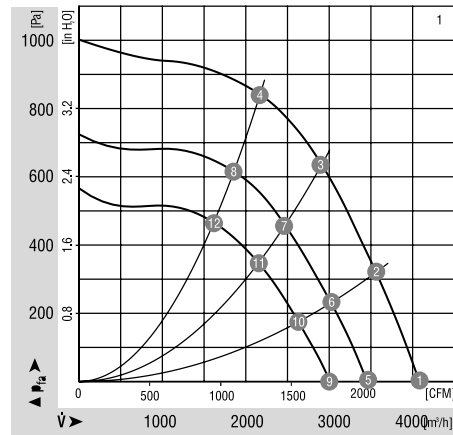
Part Number	Curve	CFM @ 0	3-VAC	Hertz	Power (W)	dBA	Max. Amb. Temp. C	Speed (RPM)	Weight (lbs.)
R3G310-AT52-01	1	2413	380-480	50/60	970	82	50	2700	16.54
K3G310-AT52-02	1	2413	380-480	50/60	970	82	50	2700	30.87
K3G310-AT52-01	1	2413	380-480	50/60	970	82	50	2700	30.87



	n [RPM]	P ₁ [W]	I [A]	η _{IL} [%]	Lp _A [dBA]	n [RPM]	P ₁ [W]	I [A]	η _{IL} [%]	Lp _A [dBA]
1	2700	713	1.4	82	—	9	2000	289	0.6	73
1	2700	821	1.5	78	50	10	2000	334	0.6	72
1	2700	932	1.7	75	65	11	2000	378	0.7	69
1	2700	939	1.7	73	63	12	2000	377	0.7	66
1	2300	438	0.8	76	—					
1	2300	506	0.9	75	50					
1	2300	572	1.1	72	65					
1	2300	572	1.1	69	63					



Curve



ebmpapst

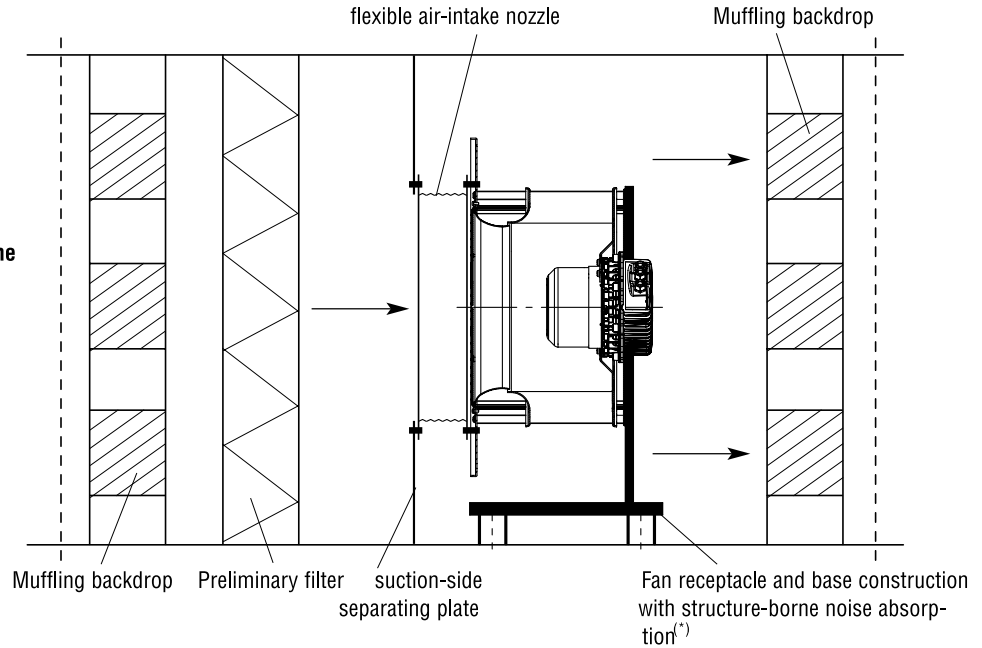
e-mail: sales@us.ebmpapst.com · TEL: 860-674-1515 · FAX: 860-674-8536

ebm-papst Inc., 100 Hyde Road, Farmington, CT 06034 USA

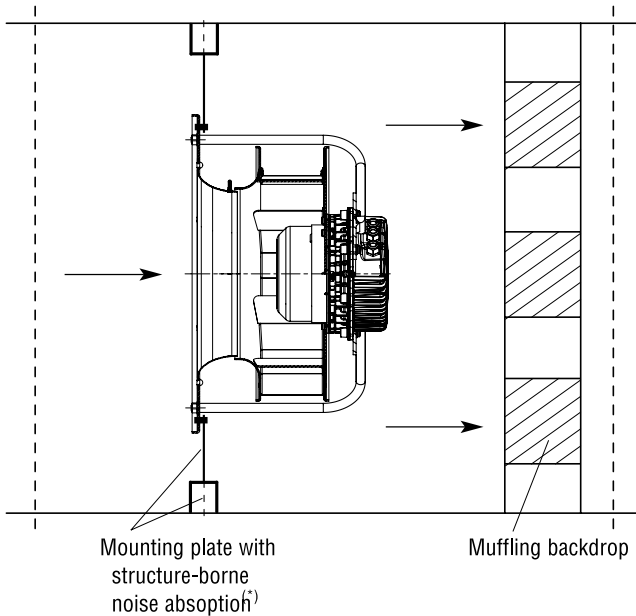
ebm-papst Inc., 2006 © ebm-papst Inc. reserves the right to change any specifications or data without notice

EC Centrifugal Fan Modules Mounting Options

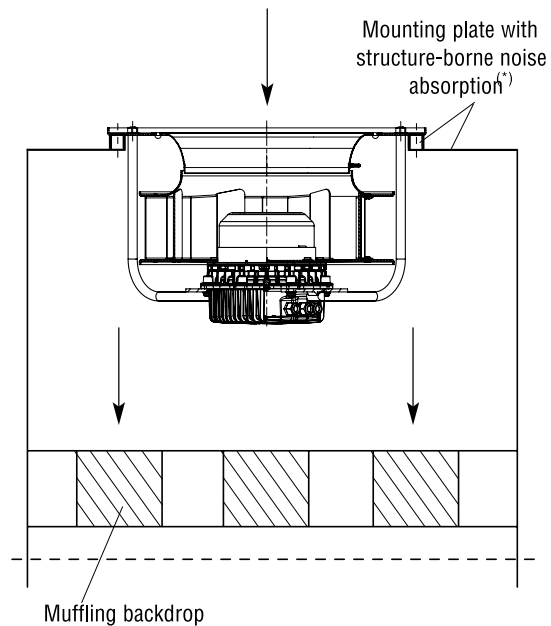
1.) AHU set-up with fan unit mounted in structure-borne noise absorbend way, anti-vibration mounted



2a.) Centrifugal fan / Module for direct installation on mounting plate with structure-borne noise absorption and anti-vibration mount (horizontal air flow)



2b.) Centrifugal fan / Module for direct installation on mounting plate with structure-borne noise absorption and anti-vibration mount (vertical air flow)



^(*)= provided by customer