

K3G250 Series

EC Fan Module

Ø 250mm Backward Curved, EC-i



■ **Material:** stator and electronics housing made of die-cast aluminum, rotor made of sheet steel (enameled in black), impeller made of sheet aluminum, galvanized sheet metal parts

■ **Cable exit:** variable

■ **Technical features:** control input 0-10 VDC / PWM, alarm relay, 10 V voltage output for potentiometer

■ **Direction of rotation:** CW, looking at rotor.

■ **Type of protection:** IP 44

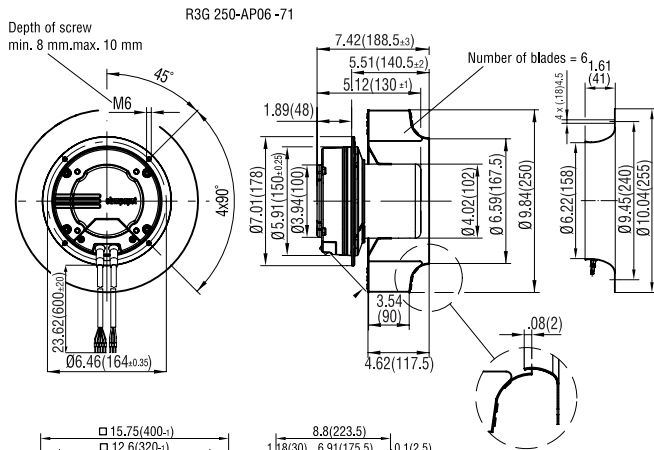
■ **Approvals:** UL, CSA, VDE, CE, CCC and GOST

■ **Mounting position:** at will

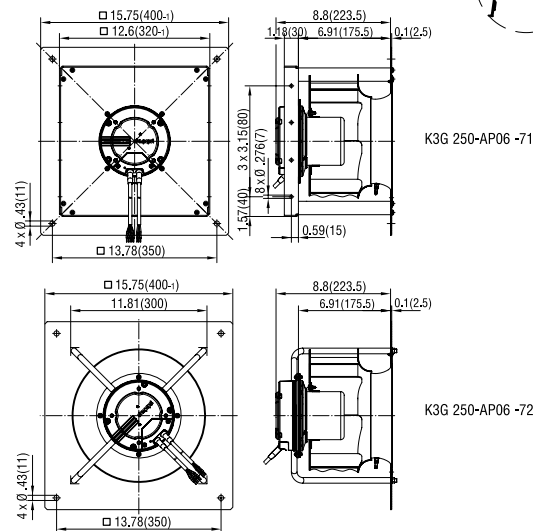
■ **Recommended inlet ring:**

R3G250	25002-2-4013
K3G250	integrated

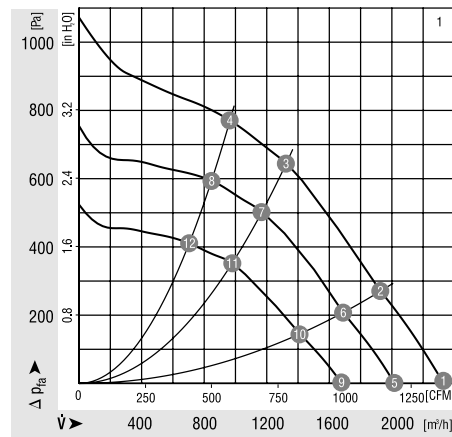
Part Number	Curve	CFM @ 0	VAC	Hertz	Power (W)	dBA	Max. Amb. Temp. C	Speed (RPM)	Weight (lbs.)
R3G250-AP06-71	1	1354	200-277	50/60	470	79	40	3400	9.70
K3G250-AP06-72	1	1354	200-277	50/60	470	79	40	3400	19.85
K3G250-AP06-71	1	1354	200-277	50/60	470	79	40	3400	22.05



	n [RPM]	P ₁ [W]	I [A]	η _{tl} [%]	Lp _A [dBA]	n [RPM]	P ₁ [W]	I [A]	η _{tl} [%]	Lp _A [dBA]
1	3470	393	2.5	79	—	9	2500	153	1.0	71
1	3430	440	2.8	77	43	10	2500	177	1.1	67
1	3410	468	3.0	73	60	11	2500	191	1.2	64
1	3430	454	2.9	71	53	12	2500	183	1.2	62
1	3000	264	1.7	75	—					
1	3000	305	1.9	72	43					
1	3000	330	2.1	68	60					
1	3000	315	2.0	67	53					



Curve



ebmpapst

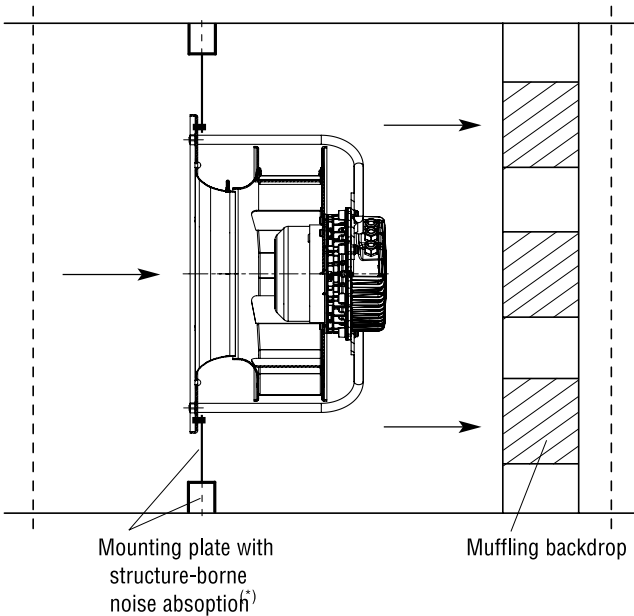
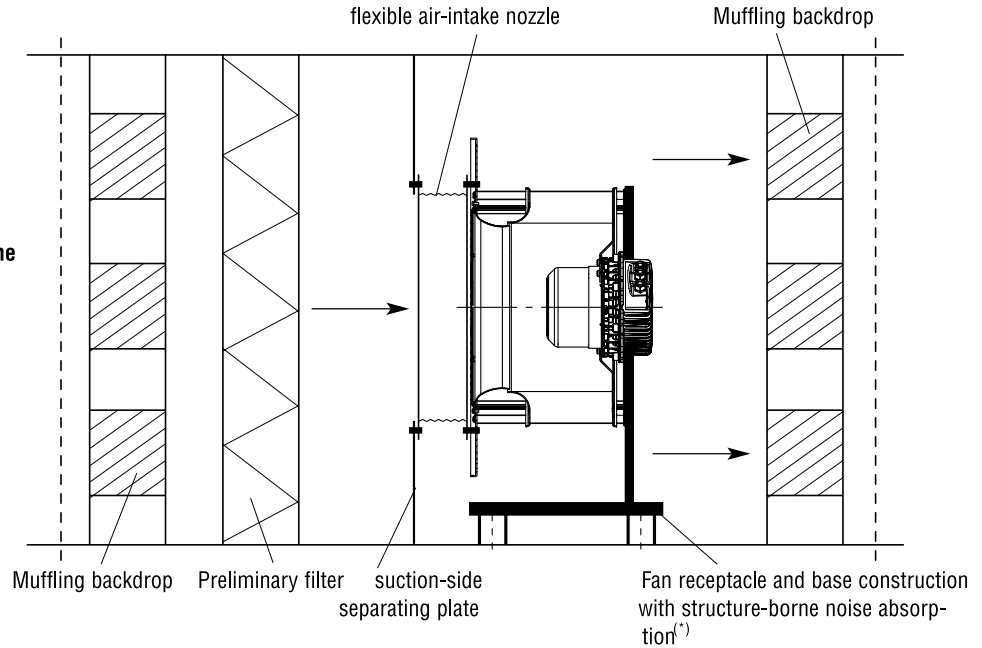
e-mail: sales@us.ebmpapst.com · TEL: 860-674-1515 · FAX: 860-674-8536

ebm-papst Inc., 100 Hyde Road, Farmington, CT 06034 USA

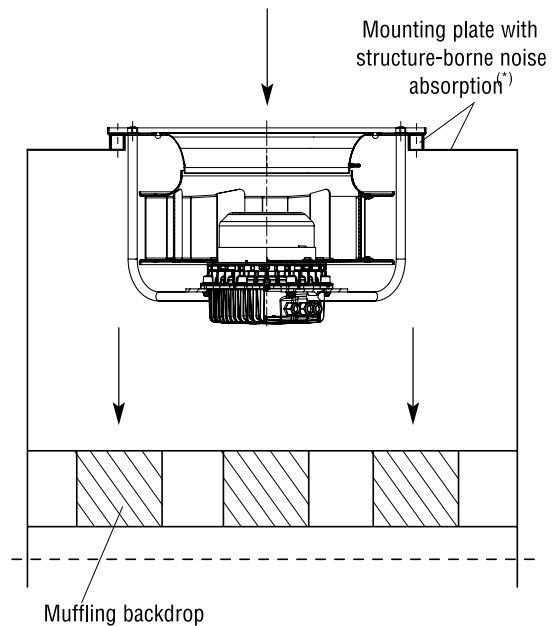
ebm-papst Inc., 2006 © ebm-papst Inc. reserves the right to change any specifications or data without notice

EC Centrifugal Fan Modules Mounting Options

1.) AHU set-up with fan unit mounted in structure-borne noise absorbend way, anti-vibration mounted



2a.) Centrifugal fan / Module for direct installation on mounting plate with structure-borne noise absorption and anti-vibration mount (horizontal air flow)



2b.) Centrifugal fan / Module for direct installation on mounting plate with structure-borne noise absorption and anti-vibration mount (vertical air flow)

(*) = provided by customer