

# K3G280AM Series EC Fan Module

## Ø 280mm Backward Curved, EC-i



■ **Material:** stator and electronics housing made of die-cast aluminum, rotor made of sheet steel (enameled in black), impeller made of sheet aluminum, galvanized sheet metal parts

■ **Cable exit:** variable

■ **Technical features:** control input 0-10 VDC / PWM, alarm relay, 10 V voltage output for potentiometer

■ **Direction of rotation:** CW, looking at rotor.

■ **Type of protection:** IP 44

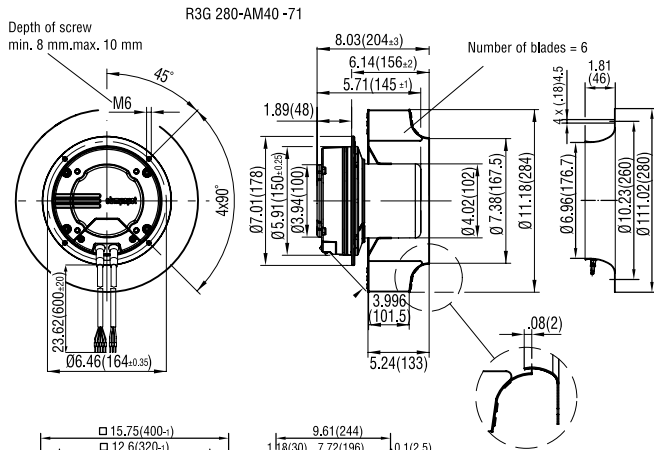
■ **Approvals:** UL, CSA, VDE, CE, CCC and GOST

■ **Mounting position:** at will

■ **Recommended inlet ring:**

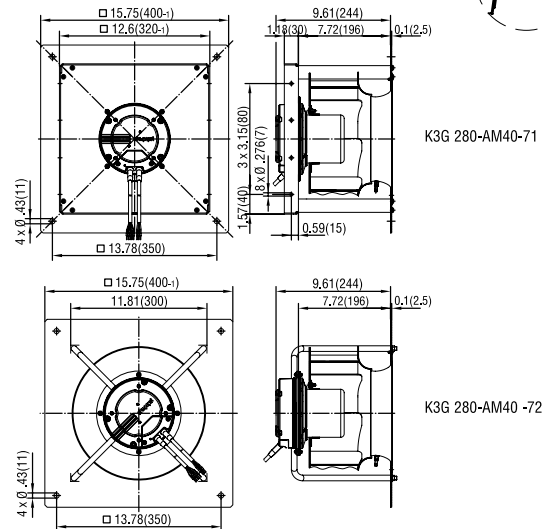
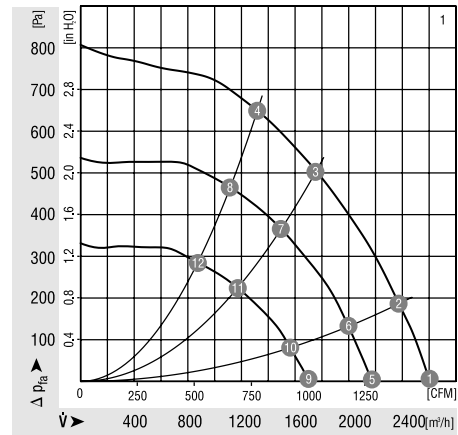
R3G280	28002-2-4013
K3G280	integrated

Part Number	Curve	CFM @ 0	VAC	Hertz	Power (W)	dBA	Max. Amb. Temp. C	Speed (RPM)	Weight (lbs.)
R3G280-AM40-71	1	1530	200-277	50/60	490	78	40	2700	11.69
K3G280-AM40-72	1	1530	200-277	50/60	490	78	40	2700	22.05
K3G280-AM40-71	1	1530	200-277	50/60	490	78	40	2700	24.26



	n [RPM]	P <sub>1</sub> [W]	I [A]	η <sub>tl</sub> [%]	Lp <sub>A</sub> [dBA]	n [RPM]	P <sub>1</sub> [W]	I [A]	η <sub>tl</sub> [%]	Lp <sub>A</sub> [dBA]
1	① 2750	386	2.5	78	—	⑨ 1800	113	0.7	67	—
1	② 2730	429	2.7	77	38	⑩ 1800	127	0.8	64	38
1	③ 2700	484	3.1	73	61	⑪ 1800	150	0.9	61	61
1	④ 2720	475	3.0	74	59	⑫ 1800	144	0.9	62	59
1	⑤ 2300	237	1.5	74	—					
1	⑥ 2300	266	1.7	72	38					
1	⑦ 2300	311	2.0	68	61					
1	⑧ 2300	300	1.9	69	59					

### Curve



**ebmpapst**

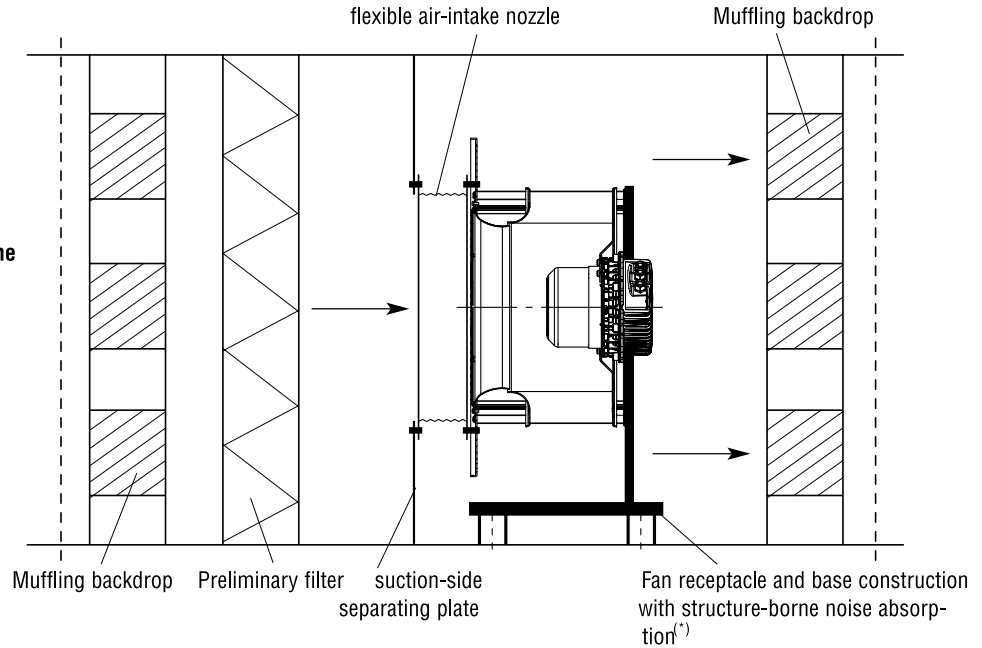
e-mail: sales@us.ebmpapst.com · TEL: 860-674-1515 · FAX: 860-674-8536

ebm-papst Inc., 100 Hyde Road, Farmington, CT 06034 USA

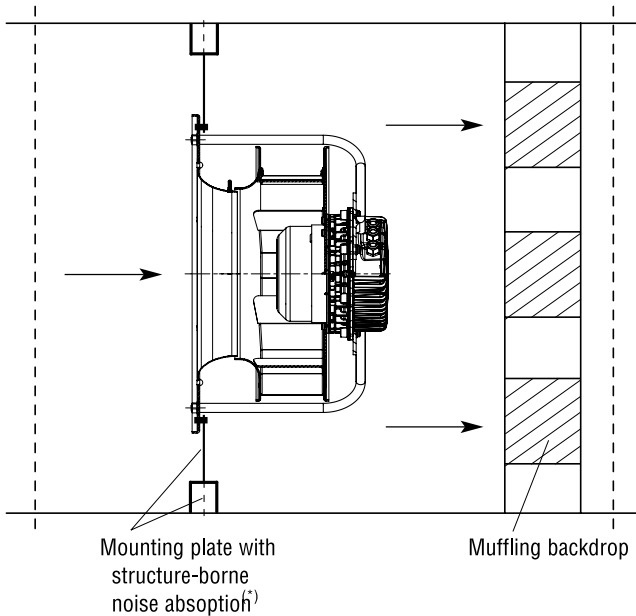
ebm-papst Inc., 2006 © ebm-papst Inc. reserves the right to change any specifications or data without notice

# EC Centrifugal Fan Modules Mounting Options

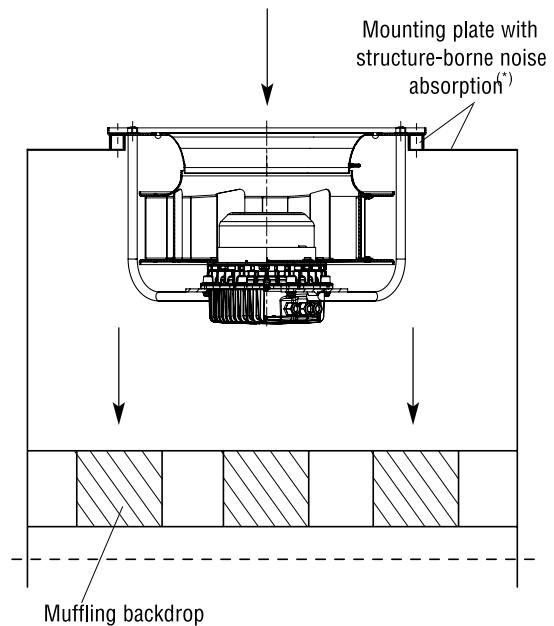
**1.) AHU set-up with fan unit mounted in structure-borne noise absorbend way, anti-vibration mounted**



**2a.) Centrifugal fan / Module for direct installation on mounting plate with structure-borne noise absorption and anti-vibration mount (horizontal air flow)**



**2b.) Centrifugal fan / Module for direct installation on mounting plate with structure-borne noise absorption and anti-vibration mount (vertical air flow)**



<sup>(\*)</sup>= provided by customer