

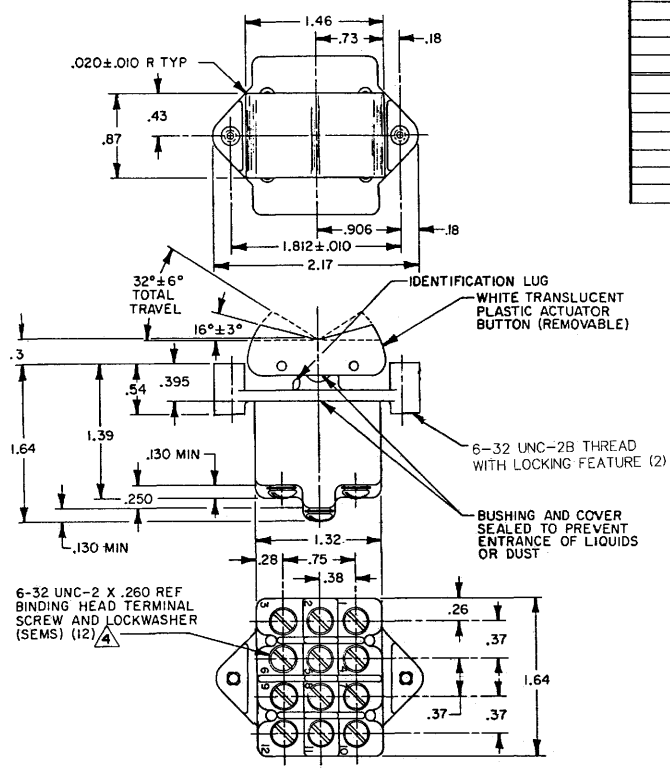
MICRO SWITCH  
 a Honeywell Division  
 FED. MFG. CODE 9192P  
 CATALOG LISTING  
 4TP201 SERIES CHART 1  
 ISSUE 6  
 REVISIONS:  
 A 10-30-49  
 B 10-30-53  
 C 11-16-56  
 D 203771  
 E 18-SEP-01  
 DRAWN BY G J W  
 CHECKED BY 23 MAY 97  
 RASTER

**MICRO SWITCH**  
a Honeywell Division  
FED. MFG. CODE 9192P

**SWITCH-TOGGLE  
FLUSH KEY**

CATALOG LISTING  
**4TP201 SERIES**  
CHART 1

THIS DRAWING COVERS A PROPRIETARY ITEM AND IS THE PROPERTY OF MICRO SWITCH, A DIVISION OF HONEYWELL. THIS DRAWING IS NOT TO BE COPIED OR USED WITHOUT THE APPROVAL OF MICRO SWITCH.



FAA-PMA	CATALOG LISTING	CIRCUIT MADE WITH BUTTON DEPRESSED ON			ELECTRICAL DATA
		LUG SIDE (1-2, 4-5, 7-8, 10-11)	CENTER (1-2, 4-5, 7-8, 10-11)	OPPOSITE LUG (2-3, 5-6, 8-9, 11-12)	
	(B)	ON	OFF	ON	L191 15A 125, 250, 277 VAC 1/2HP 125 VAC 1HP 250, 277 VAC 5A 125 VAC "L"
	(D)	OFF	NONE	ON	
	4TP201-3	ON	NONE	ON	
	4TP201-21	NONE	OFF	ON	
	4TP201-31	NONE	ON	ON	L192 10A 125, 250, 277 VAC 1/4HP 125 VAC, 1/2HP 250, 277 VAC 3A 125 VAC "L"
	4TP201-4	MOM OFF	NONE	ON	
	(B)	MOM ON	OFF	ON	
	4TP201-6	MOM ON	NONE	OFF	
	4TP201-7	MOM ON	OFF	MOM ON	
	4TP201-8	MOM ON	NONE	ON	
	4TP201-51	NONE	ON	MOM ON	UL CE
	4TP201-61	MOM ON	OFF	NONE	

**NOTES**  
 1 - MICRO SWITCH CATALOG LISTING MARKED ON SIDE OF SWITCH  
 2 - THESE SWITCHES WILL WITHSTAND TEMPERATURE OF 160°F  
 3 - APPLIES ONLY TO "ON" AND "MOMENTARY ON" POSITIONS  
 4 - SCREWS FURNISHED UNASSEMBLED  
 5 - FAA-PMA MUST BE MARKED ON SWITCH

THIRD ANGLE PROJECTION  
 SCALE FULL  
 DO NOT SCALE PRINT  
 UNLESS OTHERWISE SPECIFIED TOLERANCES ARE  
 ONE PLACE (.01) ± .030  
 TWO PLACE (.00) ± .015  
 THREE PLACE (.000) ± .005  
 ANGLES ±  
 WEIGHT .22 LB EST