

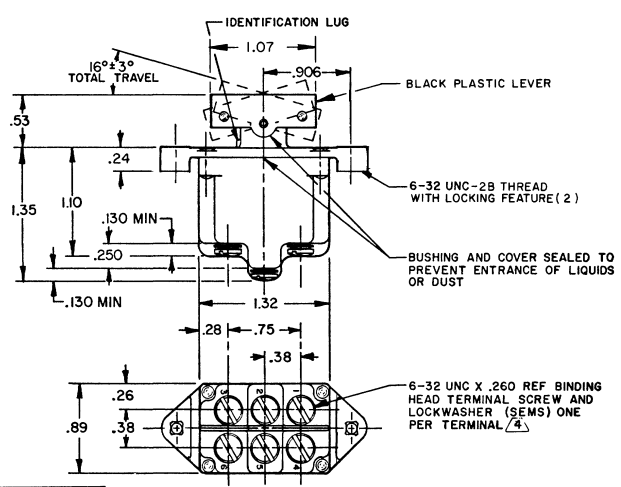
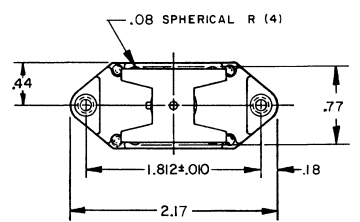
CATALOG LISTING  
**2TP7 SERIES CHART 1**  
 PAGE 1 OF 1  
 RELEASE NO. CO-78497  
 REF. PAGES 2TP7 SERIES  
 ISSUE **M**  
**9**  
 REVISIONS  
 A 08 FEB 78  
 B 07 MAR 78  
 C 21 JUN 84  
 D 09 APR 89  
 E 203709  
 10 SEP 91  
 DRAWN  
 JAF  
 21 JUN 94  
 CHECKED  
 KAG  
 1 JUL 94  
 RASTER

**MICRO SWITCH**  
 FREEPORT, ILLINOIS U.S.A.  
 A DIVISION OF HONEYWELL  
 FED. MFG. CODE 91989

**SWITCH - TOGGLE**  
**ABOVE PANEL MOUNT**

CATALOG LISTING  
**2TP7 SERIES**  
**CHART I**

THIS DRAWING COVERS A PROPRIETARY ITEM AND IS THE PROPERTY OF MICRO SWITCH, A DIVISION OF HONEYWELL. THIS DRAWING IS NOT TO BE COPIED OR USED WITHOUT THE APPROVAL OF MICRO SWITCH.



CATALOG LISTING	CIRCUIT MADE WITH BUTTON DEPRESSED ON		
	LUG SIDE (1-2,4-5)	CENTER (1-2,4-5)	OPPOSITE LUG (2-3,5-6)
2TP7-1	ON	OFF	ON
2TP7-2	OFF	NONE	ON
2TP7-3	ON	NONE	ON
2TP7-21	NONE	OFF	ON
2TP7-31	NONE	ON	ON
2TP7-5	MOM OFF	NONE	ON
2TP7-7	MOM ON	OFF	ON
2TP7-8	MOM ON	NONE	ON
2TP7-51	NONE	ON	MOM ON
2TP7-61	MOM ON	OFF	NONE

ELECTRICAL DATA	
L 191	15A 125, 250, 277 VAC 1/2 HP 125 VAC; 1 HP 250, 277 VAC 5A 125 VAC "L"
L 192	10A 125, 250, 277 VAC 1/4 HP 125 VAC; 1/2 HP 250, 277 VAC 3A 125 VAC "L"

BUTTON COLOR CODE	
COLOR IDENTIFICATION	COLOR
W	WHITE
R	RED
Y	YELLOW
BK	BLACK
G	GREEN
BL	BLUE
T	TRANSPARENT

NOTES  
 1 - SWITCH WILL WITHSTAND TEMPERATURE OF 160°F CONTINUOUSLY AT FULL RATED LOAD  
 2 - MICRO SWITCH CATALOG LISTING MARKED ON SIDE OF SWITCH APPLIES ONLY TO "ON" AND "MOMENTARY ON" POSITIONS  
 3 - SCREWS FURNISHED UNASSEMBLED  
 4 - SUFFIX MUST BE ADDED FOR DESIRED BUTTON COLOR (EXAMPLE: 2TP7-I-W)

THIRD ANGLE PROJECTION

SCALE FULL

DO NOT SCALE PRINT

TOLERANCES  
 APPLY TO DESIGN UNITS. CONVERSIONS ARE ONLY FOR REFERENCE UNLESS NOTED. TOLERANCES ARE:

NO. PLACES	1/32	1/64	1/128	1/256	1/512
FRACTIONS	±.001	±.0005	±.0002	±.0001	±.00005
DECIMALS	±.001	±.0005	±.0002	±.0001	±.00005
ANGLES	±.001	±.0005	±.0002	±.0001	±.00005

DESIGN UNITS  
 METRIC  
 US CUSTOMARY

RAW MATERIAL - COMMERCIAL STANDARDS  
 MICRO SWITCH BY STANDARDS APPLY

DIMENSIONS ARE TO BE MET BEFORE PROTECTIVE COATINGS ARE APPLIED

WEIGHT .14 LB EST