

# DM Series Miniature 2 Pole Power Rocker Switches



## Features/Benefits

- 3 AMPS to 10 AMPS
- Quick connect terminals
- Double pole in miniature size
- Recessed bracket available—prevents accidental actuation
- RoHS compliant

## Typical Applications

- Computers
- Appliances
- Electric tools



## Specifications

CONTACT RATING: DM2X Models: 3 AMPS @ 125 V AC; 2 AMPS @ 250 V AC (UL/CSA). DM6X Models: 10 AMPS @ 125 V AC; 5 AMPS @ 250 V AC (UL/CSA). 6 AMPS @ 125 V AC, 3 AMPS @ 250 V AC, T85 (VDE).

ELECTRICAL LIFE: 10,000 make-and-break cycles at full load.

INSULATION RESISTANCE:  $10^9 \Omega$  min.

DIELECTRIC STRENGTH: 1,000 Vrms min. @ sea level.

OPERATING TEMPERATURE: -20°C to +85°C

## Materials

HOUSING & ACTUATOR: 6/6 nylon (UL94V-2), black.

MOVABLE CONTACTS: DM2X Models: Copper, silver plated.  
DM6X Models: Coin silver, silver plated.

STATIONARY CONTACTS & TERMINALS: Copper or brass, silver plated.

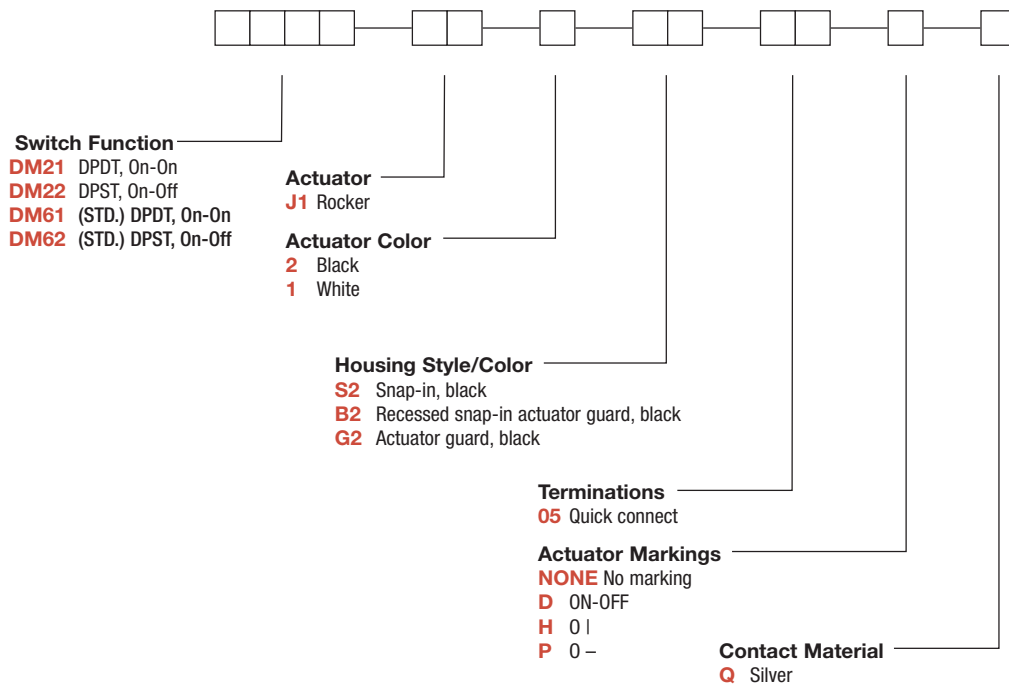
CONTACT SPRING: Music wire or stainless steel.

**NOTE:** Any models supplied with Q contact material are RoHS compliant.

**NOTE:** Specifications and materials listed above are for standard switches. For information on specific and custom switches, consult Customer Service Center.

## Build-A-Switch

To order, simply select desired option from each category and place in the appropriate box. Available options are shown and described on pages G-71 and G-73. For additional options not shown in catalog, consult Customer Service Center.



Rocker



G

**C&K**

Dimensions are shown: Inches (mm)  
Specifications and dimensions subject to change

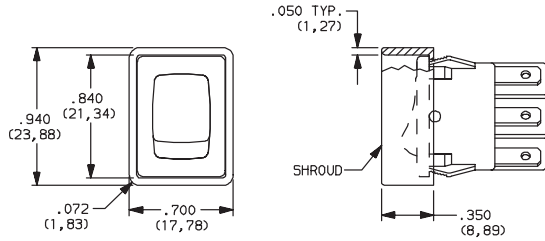


# DM Series Miniature 2 Pole Power Rocker Switches

## HOUSING STYLE/COLOR

**G2** ACTUATOR GUARD, BLACK

**NEW!**



### PANEL MOUNTING



'S2' & 'G2' housing styles

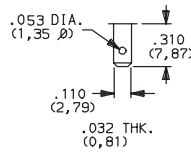
'B2' housing style

**NOTE:** Blank insert available for SP models only, see page H-76.

PANEL THICKNESS	DIM 'A' 'S2' & 'G2' HOUSING STYLES	DIM 'A' 'G2' OPTION SP MODELS ONLY	DIM 'A' 'B2' HOUSING STYLES
.030-.049 (0,76) (1,24)	.756 (19,20)	0.764 (19,41)	1.068 (27,13)
.049-.079 (1,24) (2,01)	.764 (19,41)	0.780 (19,81)	1.076 (27,33)
.079-.118 (2,01) (3,00)	.780 (19,81)	n/a	1.092 (27,74)

## TERMINATIONS

**05** QUICK CONNECT



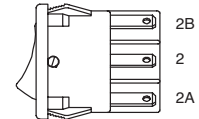
## ACTUATOR MARKINGS

**NONE** NO MARKING

**D** ON-OFF

**H** O I

**P** O -



**NOTE:** Orientation of actuator markings and terminals.

'D' & 'P' marking options: marking color white, standard for all actuator colors except white actuators. Black marking color standard for white actuators. Consult Customer Service Center for other available marking colors.

## CONTACT MATERIAL

OPTION CODE	CONTACT AND TERMINAL MATERIAL	RATINGS	
<b>Q</b>	SILVER <sup>1,2</sup>	POWER	DM2X Models: 3 AMPS @ 125 V AC; 2 AMPS @ 250 V AC (UL/CSA). DM6X Models: 10 AMPS @ 125 V AC; 5 AMPS @ 250 V AC (UL/CSA). 6 AMPS @ 125 V AC; 3 AMPS @ 250 V AC, T85 (VDE).

\* Note: See Technical Data section of this catalog for RoHS compliant and compatible definitions and specifications.

<sup>1</sup> MOVABLE CONTACT: DM2X Models: Copper, silver plated.  
DM6X Models: Coin silver, silver plated.

<sup>2</sup> STATIONARY CONTACTS & TERMINALS: Copper or brass, silver plated.

**NOTE:** Any models supplied with Q contact material are RoHS compliant.

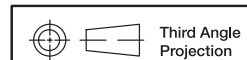
All models with all options. DM6X models also .

Rocker



G

**C&K**



Third Angle Projection

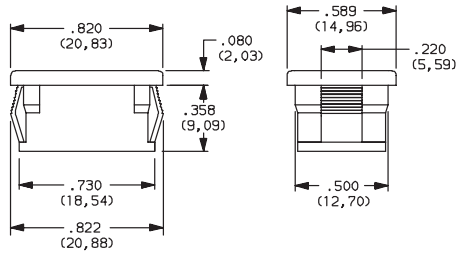
Dimensions are shown: Inches (mm)  
Specifications and dimensions subject to change

[www.ck-components.com](http://www.ck-components.com)

# DM Series Miniature 2 Pole Power Rocker Switches

## AVAILABLE HARDWARE

Insert



**PART NO.**  
**057190200**

Material: Nylon 6/6  
Finish: Matte

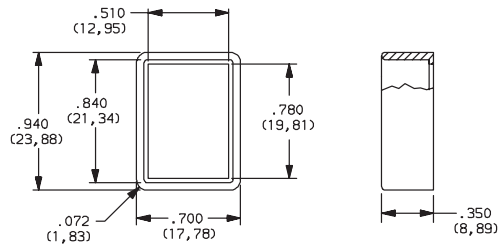
Recessed Actuator Guard



**PART NO.**  
**599D02000**

Material: 6/6 Nylon  
Finish: Matte

Actuator Guard



**PART NO.**  
**104C22000**

Material: PBT thermoplastic  
Finish: Matte

**PART NO.**  
**216C00000** IP65 SPLASH PROOF RUBBER BOOT

