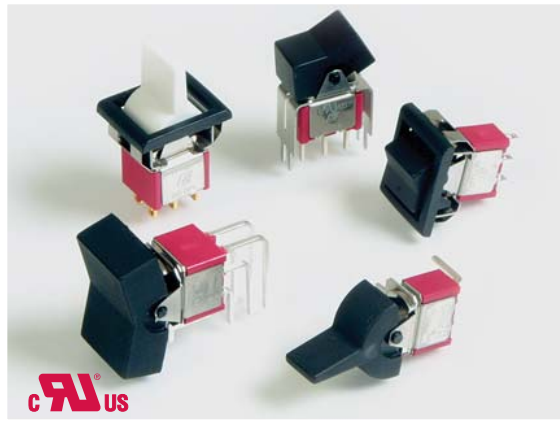




SERIES 300 SWITCHES

ROCKER AND PADDLE SWITCHES - MINIATURE



FEATURES & BENEFITS

- ▶ Multiple rocker & paddle options
- ▶ Up to 4 poles
- ▶ Multiple termination options
- ▶ Snap-in panel mount option available

APPLICATIONS/MARKETS

- ▶ Telecommunications
- ▶ Instrumentation
- ▶ Test equipment
- ▶ Networking
- ▶ Computer peripherals

SPECIFICATIONS

Contact Rating:	Dependent upon contact material
Life Expectancy:	50,000 make-and-break cycles at full load
Contact Resistance:	10 mΩ max. initial @ 2-4 VDC 100 mA for both silver and gold plated contacts
Insulation Resistance:	1,000 MΩ min.
Dielectric Strength:	1,000 V RMS @ sea level
Operating Temperature:	-30° C to 85° C

MATERIALS

Case:	Diallyl Phthalate (DAP)
Rockers:	Nylon
Bushing:	Brass, nickel plated
Housing:	Stainless steel
Terminal/Switch Support:	Brass, steel, electrotin plated
Contacts/Terminals:	Silver or gold plated copper alloy



HOW TO ORDER

SERIES 300	MODEL NO. [][]	ACTUATOR [][]	ACTUATOR** COLOR [][]	TERMINATION [][]	CONTACT MATERIAL []	SEAL E	FRAME** COLOR [][]
	SP1 SP2 SP3 SP4 SP5 DP1 DP2 DP3 DP4 DP5 DP6 DP7 DP8 3P1 3P2 3P3 3P4 3P5 4P1 4P2 4P3 4P4 4P5 4P6	<u>Panel Mount:</u> R1 R2 R3 R4 R6* R7* R8* R9* R11 R16 *Snap in panel mount	NONE = Black WHT=White RED = Red YEL = Yellow GRY = Gray PUR = Purple ** Contact E-Switch for additional colors	M1 M3 M5	Q = Silver R = Gold	E = Epoxy Sealed at Base of Terminal	(R6, R7 Only) BLK= Black WHT=White RED= Red YEL = Yellow GRY= Gray PUR= Purple ** Contact E-Switch for additional colors



Example Ordering Number

300-SP1-R6-RED-M1-R-E-RED

(See Above Model No. Options)

P.C. Mount:
J1
J2
J3
J4
J5
J6

BLK =Black
WHT=White
RED =Red
YEL =Yellow
GRY =Gray
PUR =Purple

M2
M6
M7
VS2
VS3
VS4
VS5
M61
VS21

Q = Silver
R = Gold

E = Epoxy Sealed at Base of Terminal

Specifications subject to change without notice.

TACT SWITCHES

NAVIGATION SWITCHES

PUSHBUTTON SWITCHES

TOGGLE SWITCHES

ROCKER SWITCHES

SLIDE SWITCHES

SNAP-ACTION SWITCHES

DIP SWITCHES

KEYLOCK SWITCHES

ROTARY SWITCHES

DETECTOR SWITCHES

CAP OPTIONS

SERIES 300 SWITCHES

ROCKER AND PADDLE SWITCHES - MINIATURE

TACT SWITCHES

NAVIGATION SWITCHES

PUSHBUTTON SWITCHES

TOGGLE SWITCHES

ROCKER SWITCHES

SLIDE SWITCHES

SNAP-ACTION SWITCHES

DIP SWITCHES

KEYLOCK SWITCHES

ROTARY SWITCHES

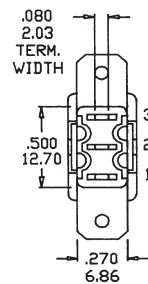
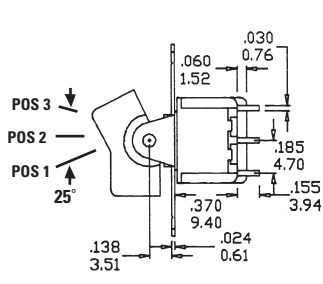
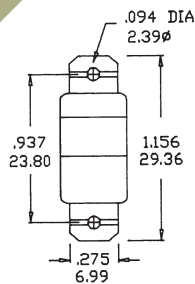
DETECTOR SWITCHES

CAP OPTIONS

SPDT



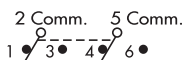
SCHEMATIC



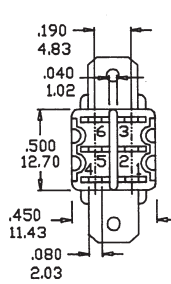
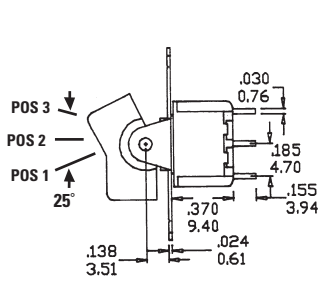
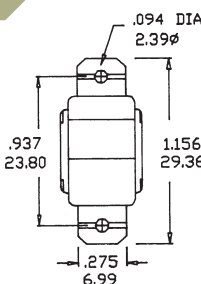
Model No.	POS 1	POS 2	POS 3
SP-1	ON	NONE	ON
SP-2	ON	NONE	(ON)
SP-3	ON	OFF	ON
SP-4	(ON)	OFF	(ON)
SP-5	ON	OFF	(ON)
Term. Comm.	2-3	OPEN	2-1

() = Momentary

DPDT



SCHEMATIC



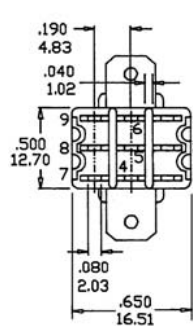
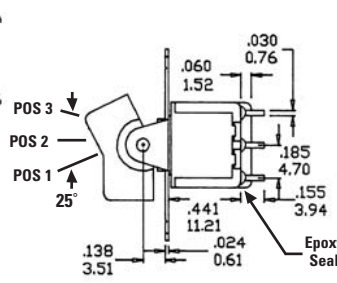
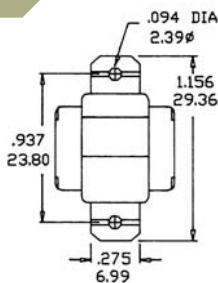
Model No.	POS 1	POS 2	POS 3
DP-1	ON	NONE	ON
DP-2	ON	NONE	(ON)
DP-3	ON	OFF	ON
DP-4	(ON)	OFF	(ON)
DP-5	ON	OFF	(ON)
DP-7	ON	ON	(ON)
DP-8	(ON)	ON	(ON)
Term. Comm.	2-3, 5-6	OPEN	2-1, 5-4

() = Momentary

3PDT



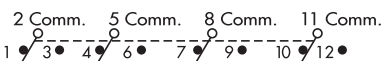
SCHEMATIC



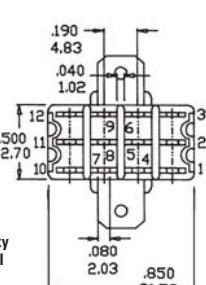
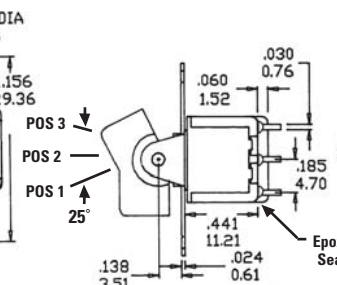
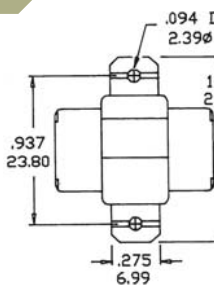
Model No.	POS 1	POS 2	POS 3
3P-1	ON	NONE	ON
3P-2	ON	NONE	(ON)
3P-3	ON	OFF	ON
3P-4	(ON)	OFF	(ON)
3P-5	ON	OFF	(ON)
Term. Comm.	2-3, 5-6, 8-9	OPEN	2-1, 5-4, 8-7

() = Momentary

4PDT



SCHEMATIC



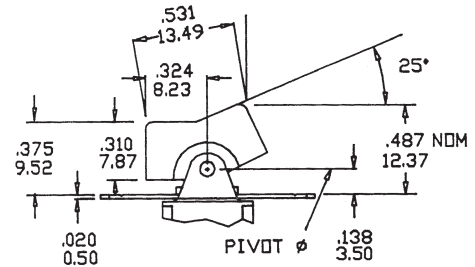
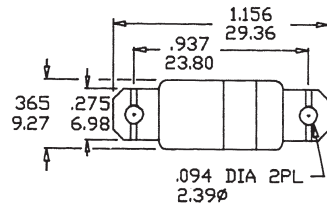
Model No.	POS 1	POS 2	POS 3
4P-1	ON	NONE	ON
4P-2	ON	NONE	(ON)
4P-3	ON	OFF	ON
4P-4	(ON)	OFF	(ON)
4P-5	ON	OFF	(ON)
Term. Comm.	2-3, 5-6, 8-9, 11-12	OPEN	2-1, 5-4, 8-7, 11-10
4P-6	ON	ON	ON
Term. Comm.	2-3, 5-6, 8-9, 11-12	2-3, 5-4, 8-9, 11-10	2-1, 5-4, 8-7, 11-10

() = Momentary

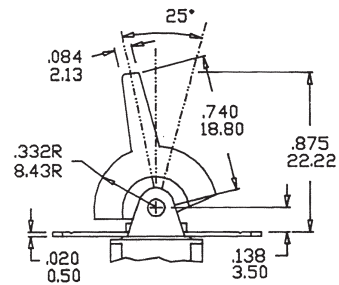
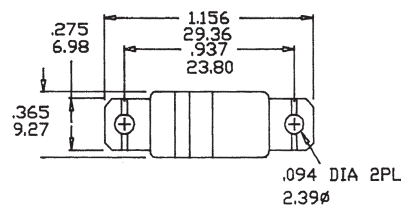


ACTUATOR OPTIONS – PANEL MOUNT

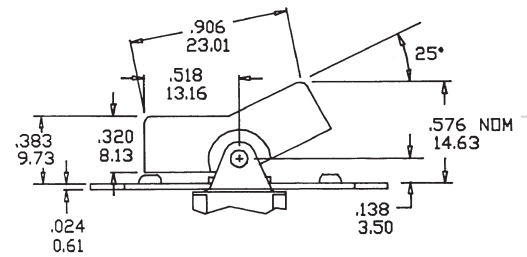
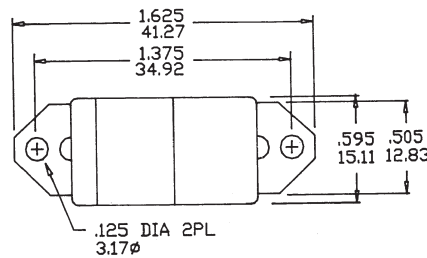
R1



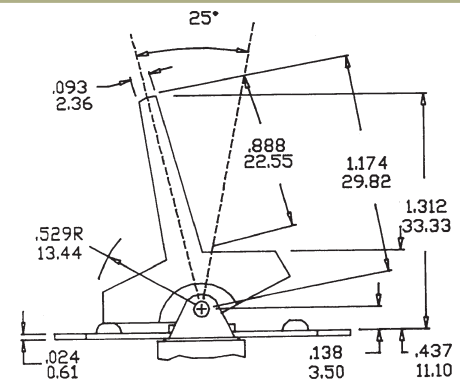
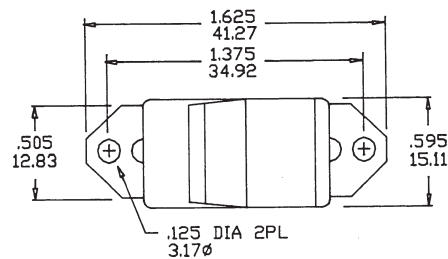
R2



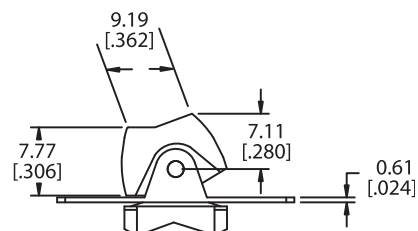
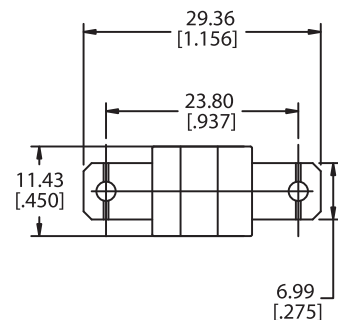
R3



R4



R11



TACT SWITCHES

NAVIGATION SWITCHES

PUSHBUTTON SWITCHES

TOGGLE SWITCHES

ROCKER SWITCHES

SLIDE SWITCHES

SNAP-ACTION SWITCHES

DIP SWITCHES

KEYLOCK SWITCHES

ROTARY SWITCHES

DETECTOR SWITCHES

CAP OPTIONS

SERIES 300 SWITCHES

ROCKER AND PADDLE SWITCHES - MINIATURE

TACT SWITCHES

NAVIGATION SWITCHES

PUSHBUTTON SWITCHES

TOGGLE SWITCHES

ROCKER SWITCHES

SLIDE SWITCHES

SNAP-ACTION SWITCHES

DIP SWITCHES

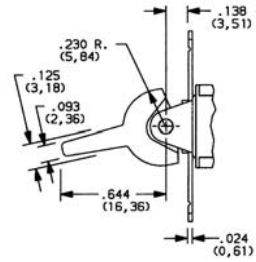
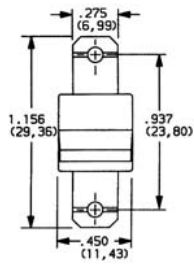
KEYLOCK SWITCHES

ROTARY SWITCHES

DETECTOR SWITCHES

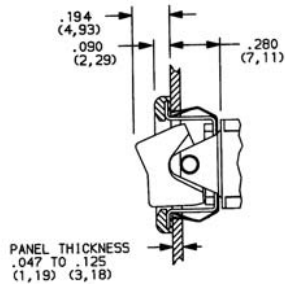
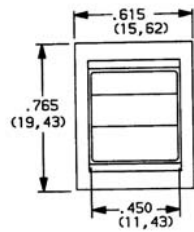
CAP OPTIONS

R16

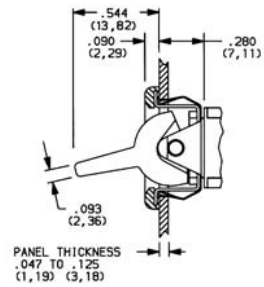
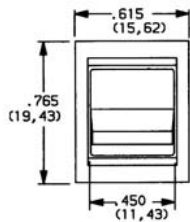


ACTUATOR OPTIONS – SNAP-IN FRONT MOUNT

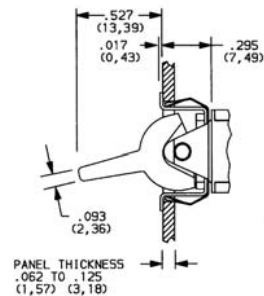
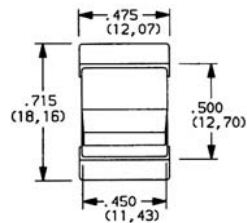
R6



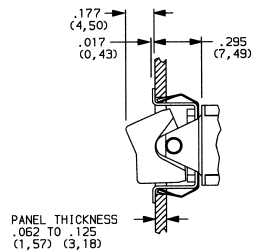
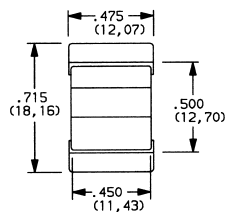
R7



R8



R9



Actuator & Frame Colors:

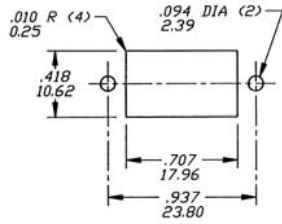
Black, White, Red

Consult E-Switch for other colors and custom actuator marking.

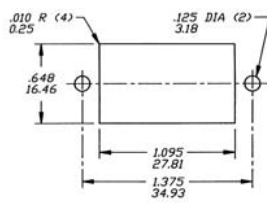


RECOMMENDED PANEL MOUNTING

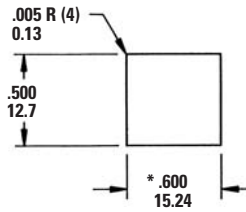
FOR R1-R2



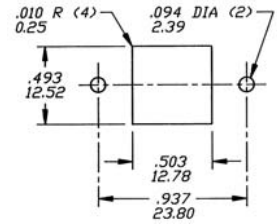
FOR R2-R3



FOR R6-R9



FOR R11-R16

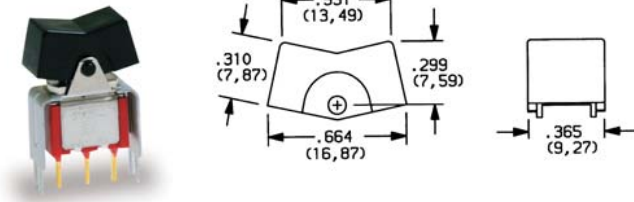


* For R8 and R9: Increase this dim. to .620/.625 (15.75/15.88) for .091/.125 (2.31/3.18) thk. panels.

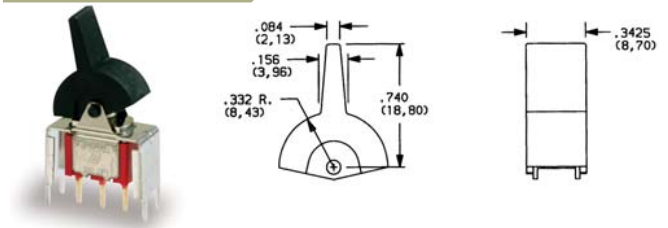
* For R6 and R7: Increase this dim. to .620/.625 (15.75/15.88) for .060/.125 (1.52/3.18) thk. panels.

ACTUATOR OPTIONS – P.C. MOUNT

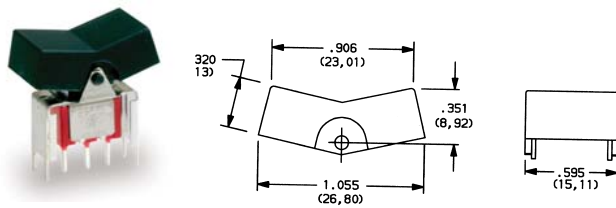
J1



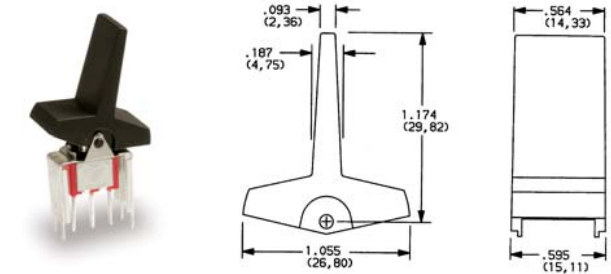
J2



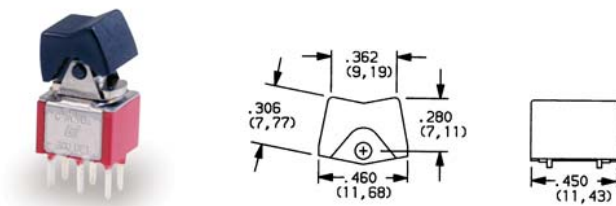
J3



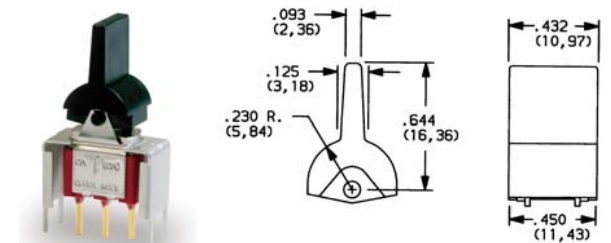
J4



J5



J6



Actuator & Frame Colors:

Black, White, Red

Consult E-Switch for other colors and custom actuator marking.

TACT SWITCHES

NAVIGATION SWITCHES

PUSHBUTTON SWITCHES

TOGGLE SWITCHES

ROCKER SWITCHES

SLIDE SWITCHES

SNAP-ACTION SWITCHES

DIP SWITCHES

KEYLOCK SWITCHES

ROTARY SWITCHES

DETECTOR SWITCHES

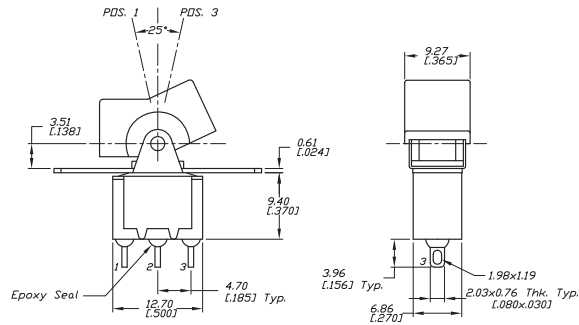
CAP OPTIONS

SERIES 300 SWITCHES

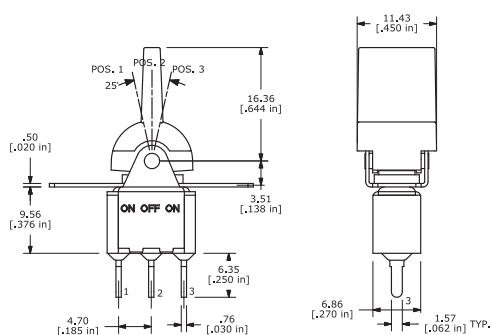
ROCKER AND PADDLE SWITCHES - MINIATURE

TERMINATION OPTIONS – PANEL MOUNT

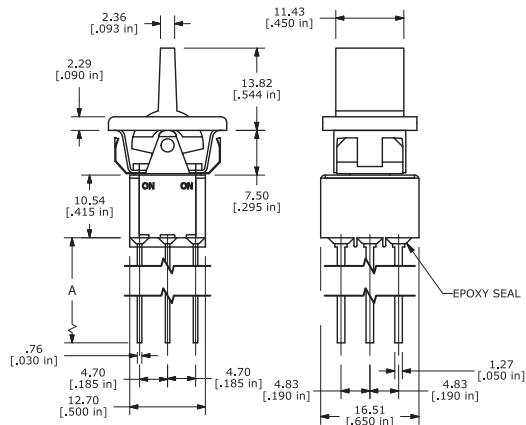
M1 STD



M3 QUICK CONNECT



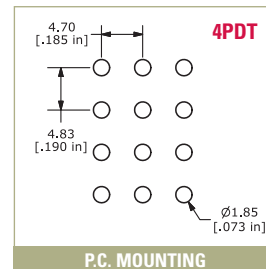
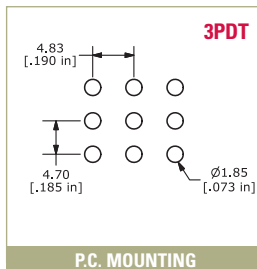
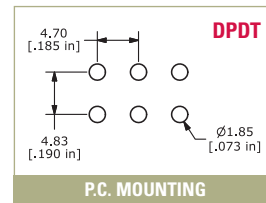
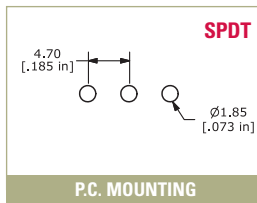
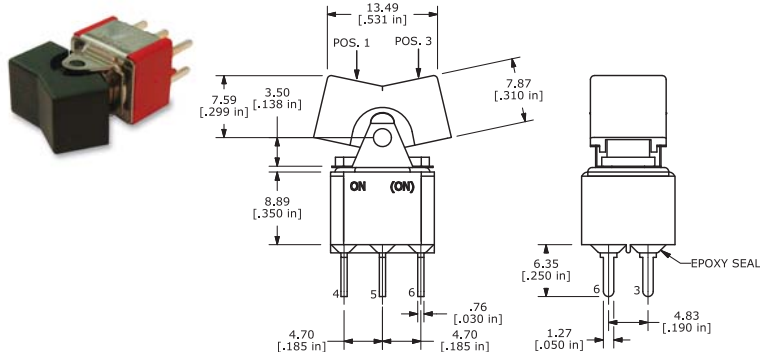
M5



Option Code	Dim. 'A'
M51	.750 (19.05)
M52	.964 (24.48)
M53	.425 (10.80)
M54	1.062 (26.97)

TERMINATION OPTIONS – P.C. MOUNT

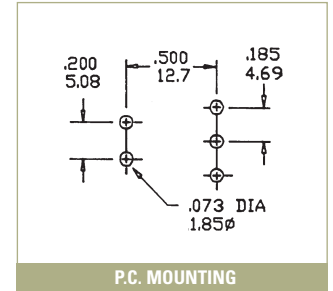
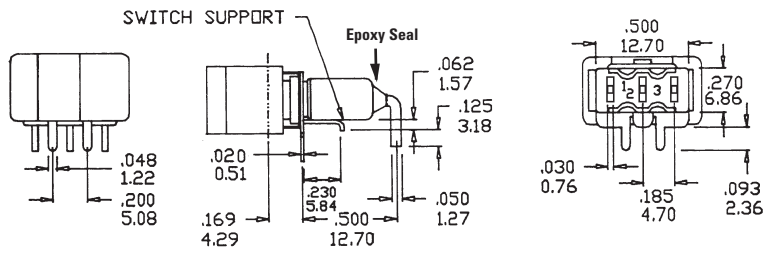
M2





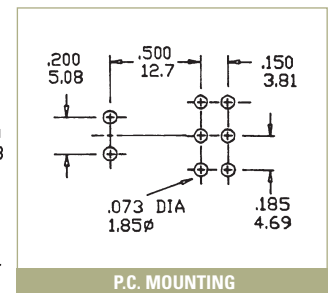
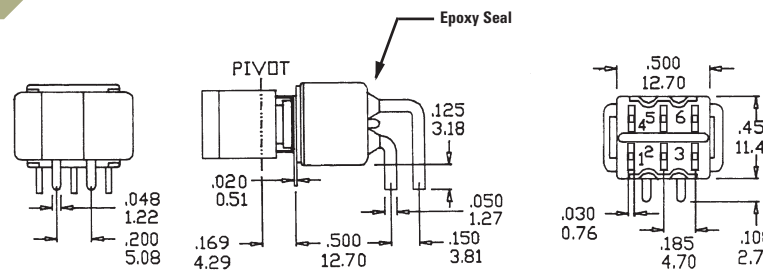
M6

SPST
Shown with J1
Actuator



M6

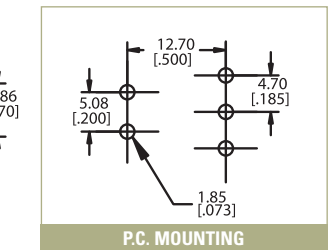
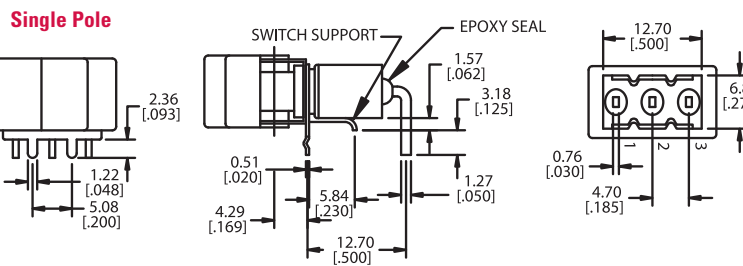
DPDT



M61

WITH P.C. BOARD
RETENTION BRACKET

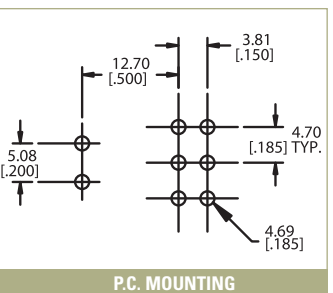
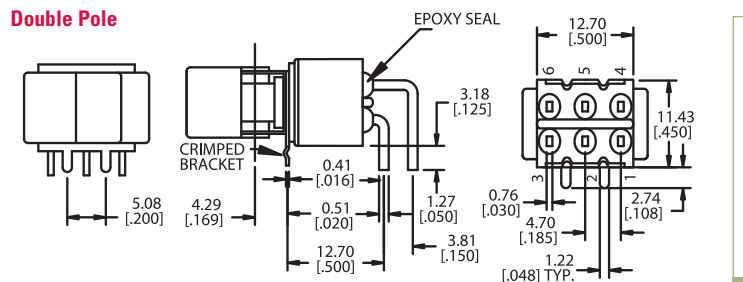
SPST



M61

WITH P.C. BOARD
RETENTION BRACKET

DPDT



TACT SWITCHES

NAVIGATION SWITCHES

PUSHBUTTON SWITCHES

TOGGLE SWITCHES

ROCKER SWITCHES

SLIDE SWITCHES

SNAP-ACTION SWITCHES

DIP SWITCHES

KEYLOCK SWITCHES

ROTARY SWITCHES

DETECTOR SWITCHES

CAP OPTIONS

SERIES 300 SWITCHES

ROCKER AND PADDLE SWITCHES - MINIATURE

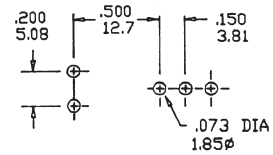
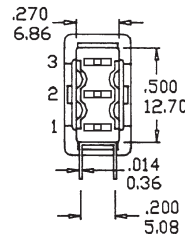
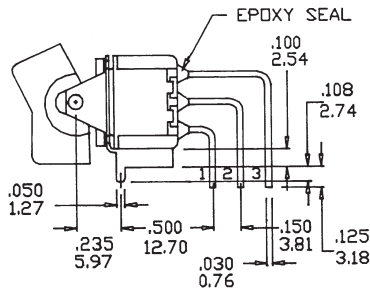
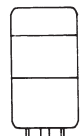
TACT SWITCHES

NAVIGATION SWITCHES

PUSHBUTTON SWITCHES

M7

SPDT



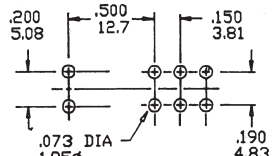
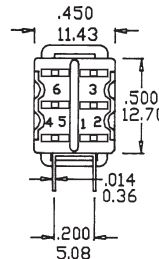
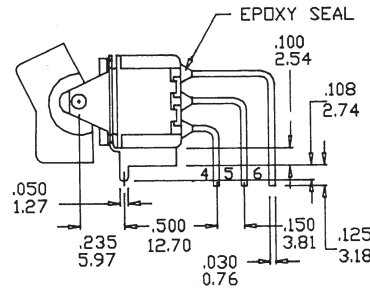
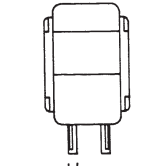
P.C. MOUNTING

TOGGLE SWITCHES

ROCKER SWITCHES

M7

DPDT



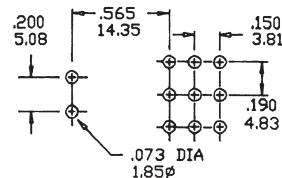
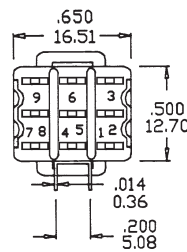
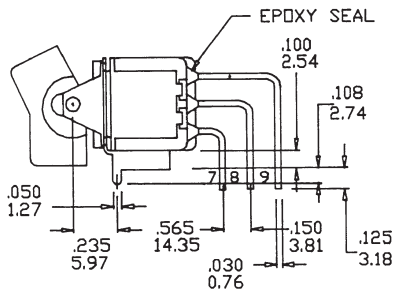
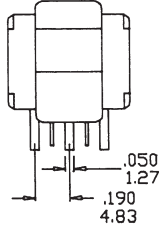
P.C. MOUNTING

SLIDE SWITCHES

SNAP-ACTION SWITCHES

M7

3PDT



P.C. MOUNTING

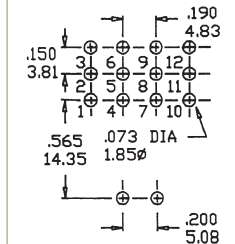
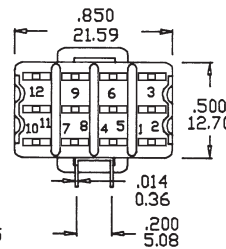
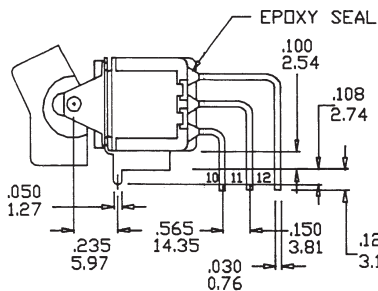
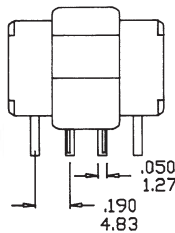
DIP SWITCHES

KEYLOCK SWITCHES

ROTARY SWITCHES

M7

4PDT



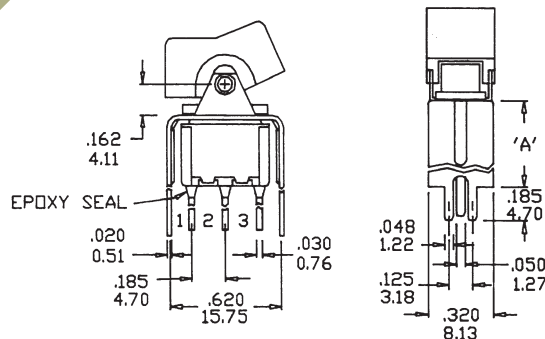
P.C. MOUNTING

DETECTOR SWITCHES

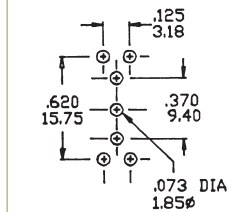
CAP OPTIONS

VS2-VS3

SPDT



Option Code	Dim. 'A'
VS2	.460 (11.68)
VS3	.630 (16.00)

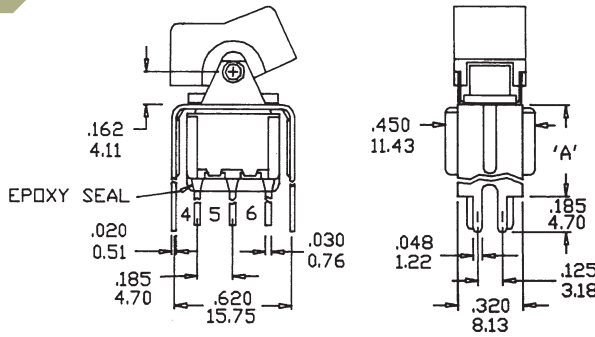


P.C. MOUNTING

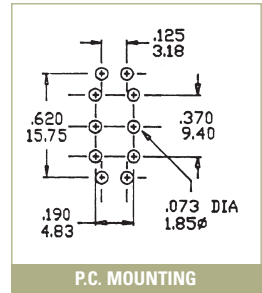


VS2-VS3

DPDT

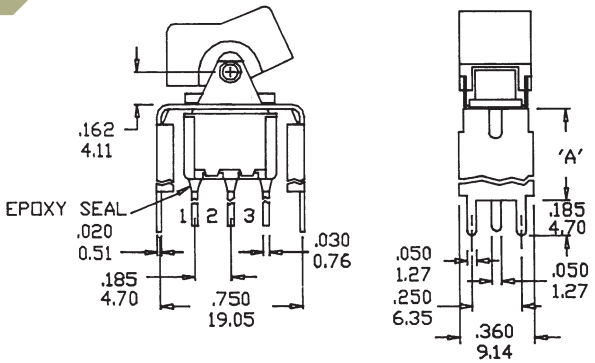


Option Code	Dim. 'A'
VS2	.460 (11.68)
VS3	.630 (16.00)

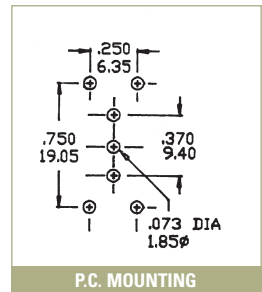


VS4-VS5

SPDT

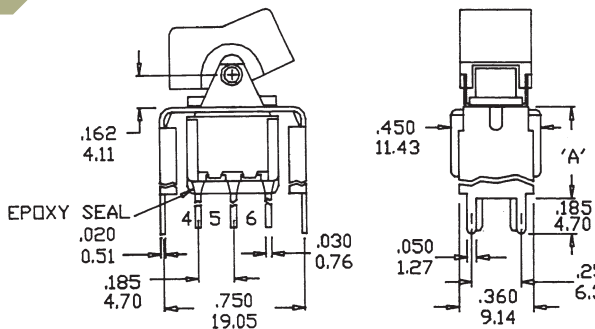


Option Code	Dim. 'A'
VS4	.460 (11.68)
VS5	.630 (16.00)

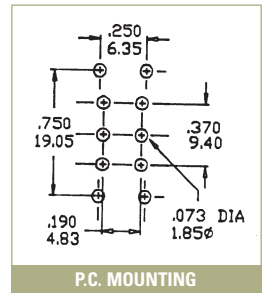


VS5

DPDT



Option Code	Dim. 'A'
VS5	.630 (16.00)



CONTACT MATERIAL OPTIONS

Q

Fixed Terminal:	Silver plated copper alloy
Moving Contact:	Silver plated copper alloy
Rating:	5 Amps with resistive load @ 120VAC or 28VDC; 2 Amps with resistive load @ 250VAC

R

Fixed Terminal:	Copper alloy with gold plate over nickel plate
Moving Contact:	Copper alloy with gold plate over nickel plate
Rating:	0.4 Volt-Amps (VA) max. @ 20V max. (AC or DC)