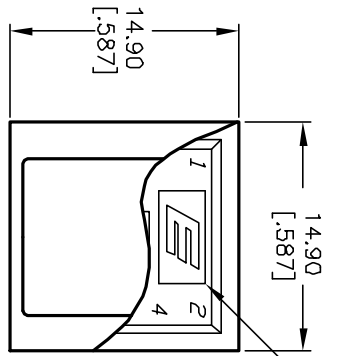
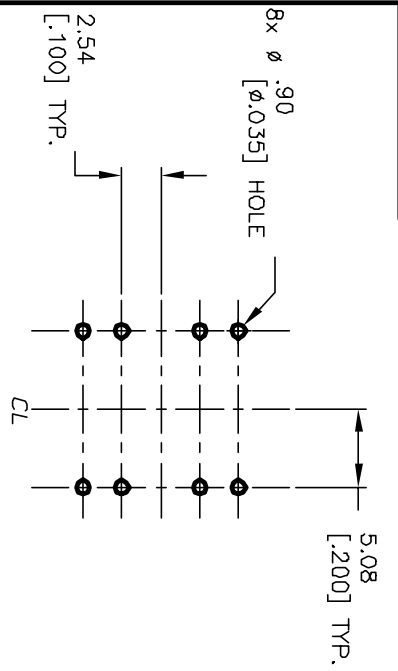
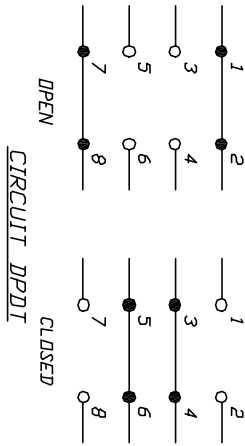


SHOW DREINTINATION OF CAP IN RESPECT TO E-SWITCH LOGD
E-SWITCH LOGD



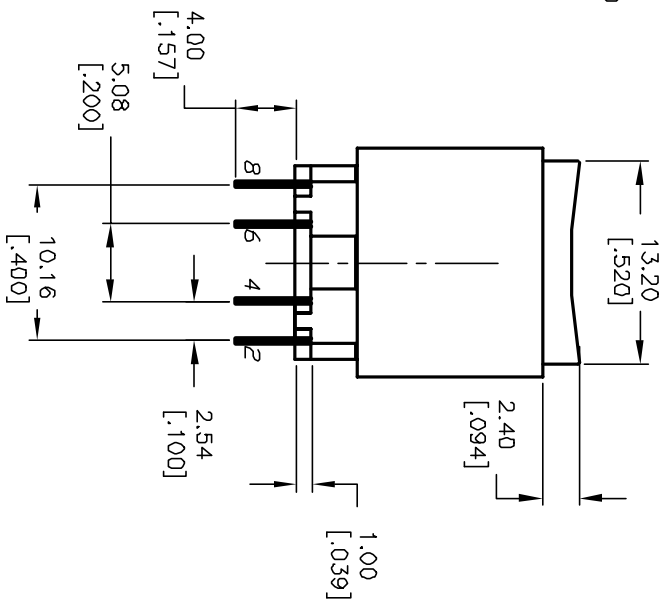
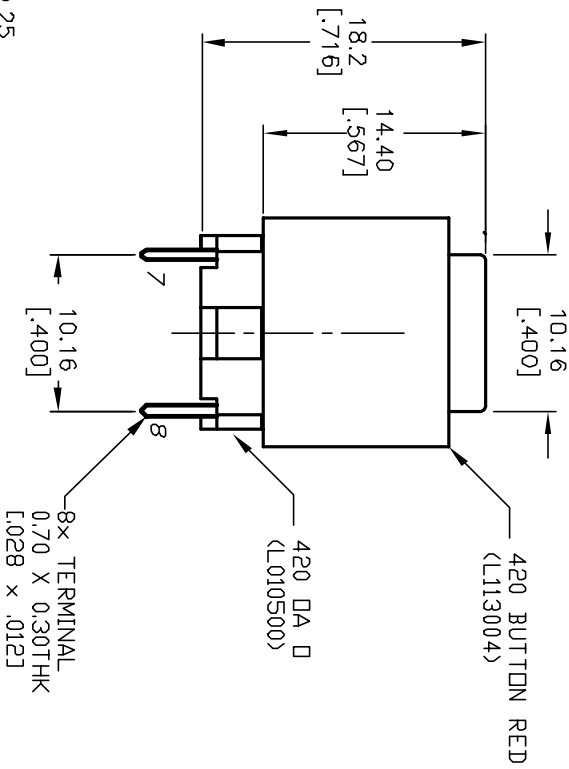
RECOMMENDED P.C.B. LAYOUT

SCALE 2:1



NOTES:

1. ALL DIMENSIONS IN MM
2. GENERAL TOLERANCE: X.X=±0.4; X.XX=±0.25
3. TERM. NOS. FOR REFERENCE ONLY.
4. CONTACT MATERIAL: FIXED: SILVER
MOVING: GOLD
5. CONTACT RATING: 250mA @120V DC
6. CONTACT RESISTANCE: 200 MILLI-Ω TYP. INITIAL
7. DIELECTRIC STRENGTH: 1000V for 2min.
8. KEY PRESSURE: 200±50gf
9. PRE-TRAVEL TO MAKE: 1.0mm TYPICAL
10. TRAVEL: 2.5±.3mm
11. MECHANICAL LIFE: 500,000 CYCLES



REV.	ECN No.	DESCRIPTION	DATE	CHKD
A	11751	RELEASED FOR PRODUCTION	1/23/03	CB

TITLE		420 DA D A S (Momentary)	
SCALE	DATE	DR	DWG
2:1	--	--	XL0144P
			REV
			A

E-SWITCH®