

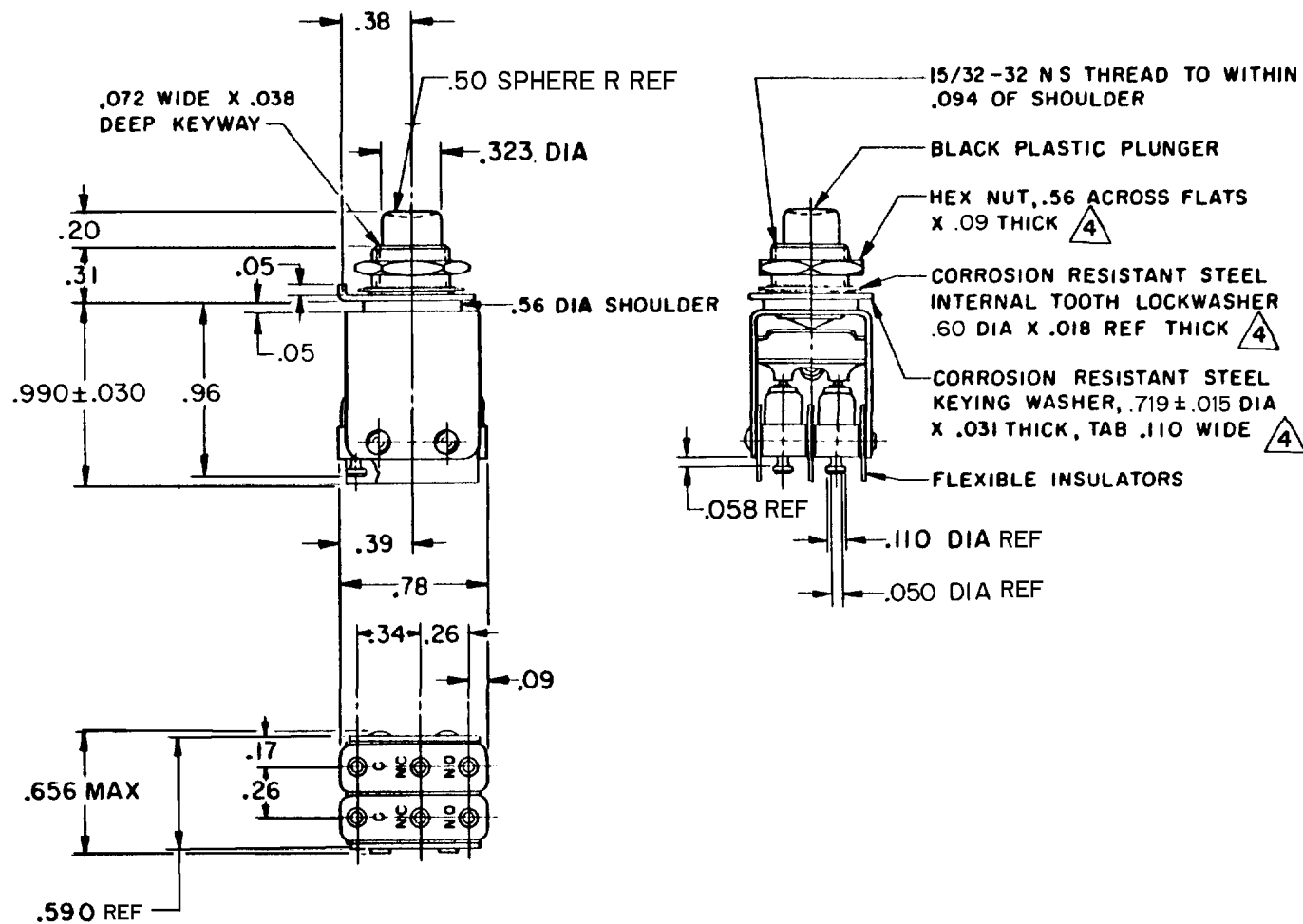


MICRO SWITCH
 FREEPORT, ILLINOIS, U.S.A.
 A DIVISION OF HONEYWELL
 FED. MFG. CODE 91929

ASSEMBLY-PUSHBUTTON SWITCH

CATALOG LISTING
2PB11-T

FORMTEK
 FO-90378
 DRAWN
 H B W 18 FEB 65
 CHECK L S D 21 FEB 65
 DRAWN
 H B W 18 FEB 65
 CHECK L S D 21 FEB 65
 REVISIONS
 A CO19800 H B W 18 FEB 65
 B CO21022 M B F 22 FEB 66
 C CO30742 R E R 2 OCT 72
 D CO31782 D B W 16 MAR 73
 E CO-93593 P P F 22 OCT 98
 F CO-94273 G J W 15 APR 99
 ISSUE 1213
 DRAWING NUMBER M 2PB11-T
 PAGE 1 OF 1
 RELEASE NO.
 REPLACES



- NOTES**
- 1 - UNIT INCLUDES "11SM" TYPE BASIC SWITCH (2)
 - 2 - TERMINALS ARE PLATED FOR SOLDERING
 - 3 - SWITCHES DO NOT NECESSARILY OPERATE SIMULTANEOUSLY
 - (4) MOUNTING HARDWARE FURNISHED UNASSEMBLED

THIS DRAWING COVERS A PROPRIETARY ITEM AND IS THE PROPERTY OF MICRO SWITCH, A DIVISION OF HONEYWELL. THIS DRAWING IS NOT TO BE COPIED OR USED WITHOUT THE APPROVAL OF MICRO SWITCH.

CHARACTERISTICS	ELECTRICAL DATA	SCALE FULL
OPERATING FORCE ----- 30 OZ APPROX	CONTACT ARRANGEMENT S P D T (2)	DO NOT SCALE PRINT
(B) TOTAL TRAVEL ----- .110 APPROX	250 VAC ----- 5 AMP	UNLESS OTHERWISE NOTED
PRETRAVEL ----- .040 APPROX	30 VOLTS DC RATING	DIMENSIONS ARE IN INCHES
DIFFERENTIAL TRAVEL ----- .050 MAX	INDUCTIVE ----- SEA LEVEL ----- 3 AMP	TOLERANCES ARE:
	50,000 FT ----- 2.5 AMP	ONE PLACE (.0) ±.030
	RESISTIVE ----- SEA LEVEL ----- 5 AMP	TWO PLACE (.00) ±.015
	50,000 FT ----- 5 AMP	THREE PLACE (.000) ±.005
	MAXIMUM INRUSH ----- 24 AMP	ANGLES ±
		WEIGHT