

# MICRO SWITCH

FREEPORT ILLINOIS, U.S.A  
A DIVISION OF HONEYWELL  
FED. MFG. CODE 91929

# ASSEMBLY PUSHBUTTON SWITCH

3PB11-H58

3PB11-H58

PAGE 1 OF 1

REPLACES

RELEASE NO. PR-6772

**M**

DRAWING  
NUMBER

6

ISSUE

CHECK

REVISIONS

A	PR 6772	19MAY08
B	GLH OCT 77	
B	CO- 93593	
	PPF 27 OCT 98	
C	0018500	
	PM 23FEB06	
D	0039655	
	PK 19MAY08	

ASD

CHECK

03 NOV 98

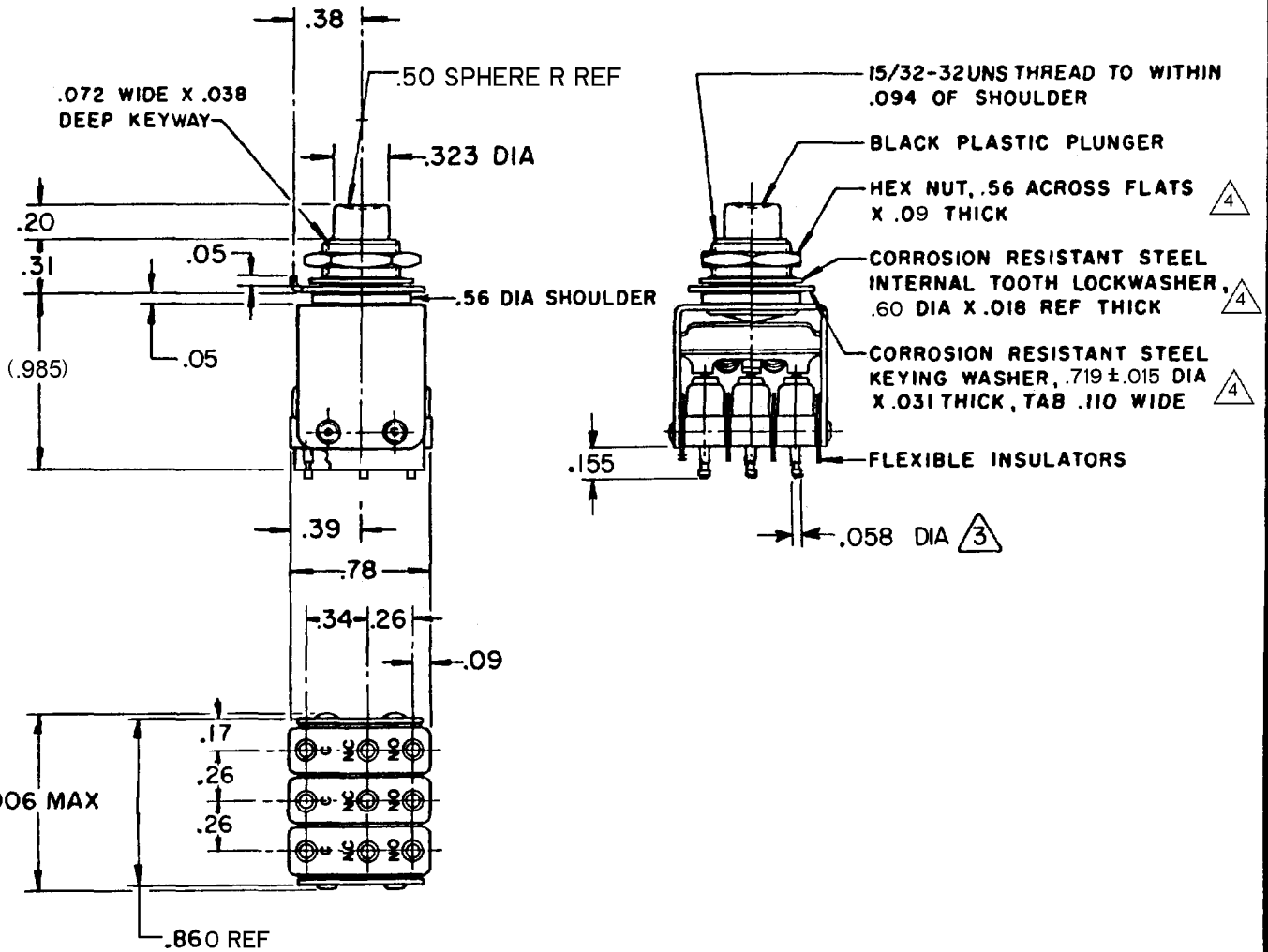
JAF

CHECK

14 OCT 77

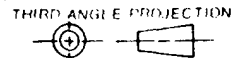
SLB

FO-52848-A



- NOTES**
- 1- UNIT INCLUDES "ISM" TYPE BASIC SWITCH (3)
  - 2- SWITCHES DO NOT NECESSARILY OPERATE SIMULTANEOUSLY
  - 3 PLATED TERMINALS WILL ACCEPT "AMP INC" .058 DIA PIN RECEPTACLES
  - 4 MOUNTING HARDWARE FURNISHED UNASSEMBLED

THIS DRAWING COVERS A PROPRIETARY ITEM AND IS THE PROPERTY OF MICRO SWITCH, A DIVISION OF HONEYWELL. THIS DRAWING IS NOT TO BE COPIED OR USED WITHOUT THE APPROVAL OF MICRO SWITCH.



CHARACTERISTICS
OPERATING FORCE --- 35 OZ APPROX
TOTAL TRAVEL ----- .100 APPROX

ELECTRICAL DATA
CONTACT ARRANGEMENT S P D T (3)
250 VAC ----- 5 AMP
30 VOLTS DC RATING
INDUCTIVE ----- SEA LEVEL --- 3 AMP
50,000 FT --- 2.5 AMP
RESISTIVE ----- SEA LEVEL --- 5 AMP
50,000 FT --- 5 AMP
MAXIMUM INRUSH ----- 24 AMP

SCALE ---
DO NOT SCALE PRINT
TOLERANCES
APPLY TO DESIGN UNITS. CONVERSIONS ARE ONLY FOR REFERENCE. UNLESS NOTED, TOLERANCES ARE 2
DIM. TOL. DIM. TOL.
mm mm/in in mm/in
NO PLACES X 1/34 X X 0.87/03
TWO PLACES X, X 0.4/016 X XX 0.38/018
THREE PLACES X, XX 0.15/006 X XXX 0.13/006
ANGLES
SI METRIC US CUSTOMARY
DESIGN UNITS <input type="checkbox"/> <input checked="" type="checkbox"/>
WEIGHT

RASTER  
FO-52848-A  
DRAWN