

RAPS-PUSH BUTTON SWITCH

GENERAL ELECTRICAL & MECHANICAL SPECIFICATION

Rating: Maintained	10A @ 250V ac (resistive)
Rating: Momentary (2)	2A @ 250V ac (resistive)
Life:	>25,000 Cycles
Operating Temperature:	-25 ° C to +100 ° C
Proof voltage:	2.5KV ac (Initial)
Insulation Resistance:	>999 MΩ @ 500V dc (Initial)
Contact Maintained	Single pole changeover
Contact Momentary (2)	Push to Make
Switch Housing:	Polyamide 6.6 G.F.V0 Rated
Switch Wafer:	Polyamide 6.6 G.F.V0 Rated
Switch Plunger:	Glass Filled Nylon
Contacts: Maintained	Silver Cadmium Oxide
Contacts: Momentary	Silver Nickel
Rotor Contacts:	Silver Cadmium Oxide
Housing & Bezel	Zinc Alloy to BS1004A

RoHS COMPLIANT

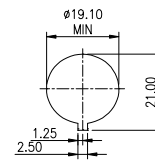


GENERAL BENEFITS & FEATURES

- Momentary / Maintained Switch
- Choice of button colours
- Switch module VDE approved
- Length overall behind bezel 44mm

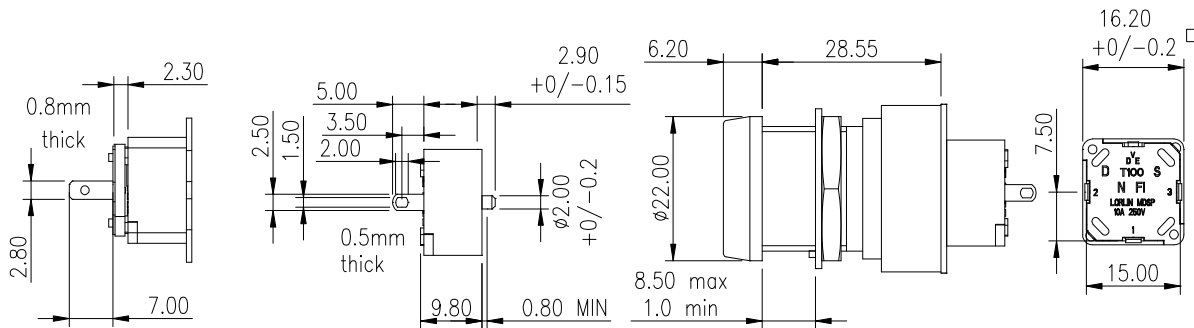
TYPICAL PANEL CUTOUT

- Panel thickness 1mm- 8.5mm
- Robust design - metal housing/bezel



SWITCH MODULE

Push to Make - Maintained & Push to Break



ORDERING CODE

		SWITCH CONFIGURATION			
	ORDERING CODE	BUTTON COLOUR	TERMINAL	RATING	ACTUATION
MOMENTARY PUSH TO BREAK	RAPS - 001	RED	SOLDER	10A 250 VAC	
	RAPS - 002	BLACK	SOLDER		
	RAPS - 003	GREEN	SOLDER		
MAINTAINED	RAPS - 004	RED	SOLDER	10A 250 VAC	
	RAPS - 005	BLACK	SOLDER		
	RAPS - 006	GREEN	SOLDER		
MOMENTARY PUSH TO MAKE	RAPS - 007	RED	SOLDER	2A 250 VAC	
	RAPS - 008	BLACK	SOLDER		
	RAPS - 009	GREEN	SOLDER		

Lorlin Electronics Ltd, Harwood Industrial Estate, Harwood rd, Littlehampton, W. Sussex BN17 7At England
Tel (+44) 01903 725121 Fax (+44) 01903 726808 E-mail sales@lorlin.co.uk