

4

3

2

1

THIS DRAWING IS UNPUBLISHED. RELEASED FOR PUBLICATION. ALL RIGHTS RESERVED.

LOC	DIST	REVISIONS					
AD	00	P	LTR	DESCRIPTION	DATE	BY	APD
		AM3		REVISED PER ECO-11-004587	11MAR11	RK	HMR

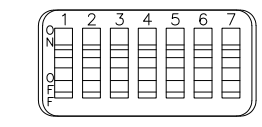
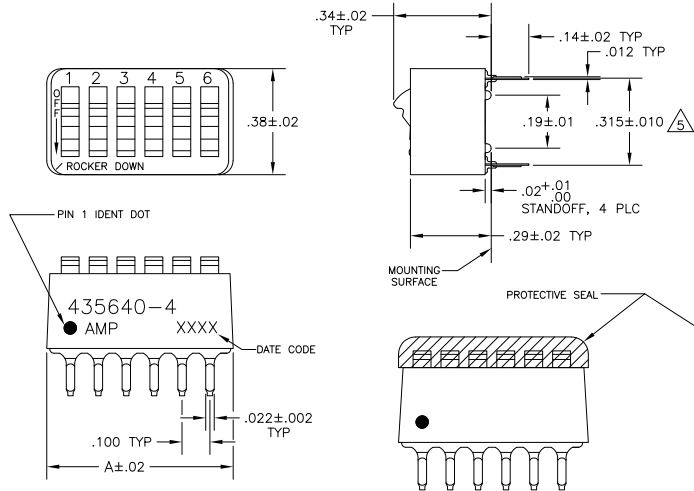


FIG 2

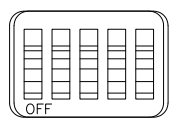


FIG 3

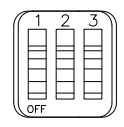


FIG 4

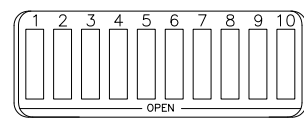


FIG 5

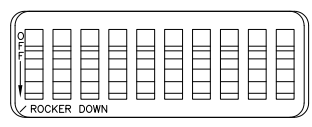


FIG 6

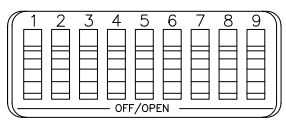


FIG 7

- FOR ADDITIONAL SPECIFICATIONS SEE AMP PRODUCT SPEC 108-7532.
  - SWITCH SHOWN IN OPEN POSITION.
  - ALL CHARACTERS AND ROCKERS ARE WHITE, HOUSING IS BLUE.
  - STAMPING WILL VARY ON 2 AND 3 POSITION SIDES DUE TO SPACE RESTRICTIONS.
- △ .315 DIMENSION APPLIES AT TERMINAL TIPS.  
 +.010  
 TERMINALS ARE .300-.000 AT MOUNTING SURFACE.
- △ STRIPPABLE TRANSPARENT SEAL, SEE FIG 1.

REVISION	FIG	DESCRIPTION	DATE	BY	APD
1	FIG 6	△ OBSOLETE	1-08	10	6-435640-1
2	FIG 7	△ OBSOLETE	.58	5	6-435640-0
3	FIG 5	△ OBSOLETE	-.48	4	5-435640-9
4	FIG 2	△ OBSOLETE	-.88	8	5-435640-8
5	FIG 5	△ OBSOLETE	.98	9	5-435640-7
6	FIG 5	△ OBSOLETE	-.68	6	5-435640-6
7	FIG 3	△ OBSOLETE	-.48	4	5-435640-4
8	FIG 3	△ OBSOLETE	.88	8	5-435640-3
9	FIG 3	△ OBSOLETE	1.08	10	5-435640-2
10	FIG 3	△ OBSOLETE	.88	8	5-435640-0
11	FIG 3	△ OBSOLETE	.88	8	4-435640-9
12	FIG 3	△ OBSOLETE	-.58	5	4-435640-8
13	FIG 3	△ OBSOLETE	1.08	10	4-435640-7
14	FIG 3	△ OBSOLETE	1.28	12	4-435640-3
15	FIG 3	△ OBSOLETE	1.08	10	4-435640-1
16	FIG 3	△ OBSOLETE	.98	9	4-435640-0
17	FIG 3	△ OBSOLETE	.88	8	3-435640-9
18	FIG 3	△ OBSOLETE	.78	7	3-435640-8
19	FIG 3	△ OBSOLETE	.68	6	3-435640-7
20	FIG 3	△ OBSOLETE	.58	5	3-435640-6
21	FIG 3	△ OBSOLETE	.48	4	3-435640-5
22	FIG 3	△ OBSOLETE	.38	3	3-435640-4
23	FIG 3	△ OBSOLETE	.28	2	3-435640-3
24	FIG 4	AS SHOWN	1.28	12	3-435640-2
25	FIG 4	AS SHOWN	.38	3	3-435640-0
26	FIG 4	AS SHOWN	.28	2	2-435640-9
27	FIG 2	OBSOLETE	.78	7	2-435640-2
28	FIG 2	AS SHOWN	1.08	10	435640-7
29	FIG 2	AS SHOWN	.98	9	435640-6
30	FIG 2	AS SHOWN	.88	8	435640-5
31	FIG 2	AS SHOWN	.68	6	435640-4
32	FIG 2	AS SHOWN	.58	5	435640-3
33	FIG 2	AS SHOWN	.48	4	435640-2
34	FIG 2	AS SHOWN	.78	7	435640-1

△ OBSOLETE PARTS: OBSOLETE CIS STREAMLINING PER D.RENAUD/D.SINISI

THIS DRAWING IS A CONTROLLED DOCUMENT. DATE: 15NOV09

DESIGNED BY: R.TALLEY  
 CHECKED BY: G.MILLER  
 DRAWN BY: J.LLEITER  
 PRODUCT SPEC: 7100 SERIES, SPST, STANDARD

MATERIAL: HOUSING & ROCKERS: POLYESTER  
 CONTACTS: COPPER ALLOY

FINISH: CONDUCTIVE PLATED (200000 MIN GOLD IN CONTACT AREA OVER 200000 MIN NICKEL)

SIZE: A2  
 CASE CODE: 00779  
 DRAWING NO: 435640

RESTRICTED TO: —

CUSTOMER DRAWING SCALE: 4:1 SHEET: 1 of 1 REV: AM3