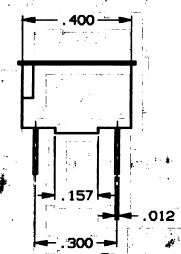
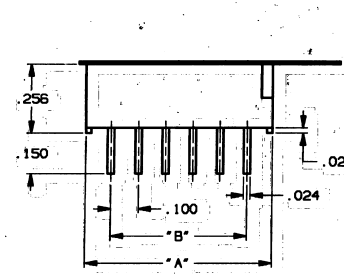
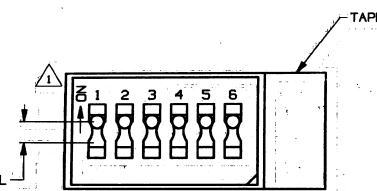


CONVERSION CHART		CONVERSION CHART	
INCH	MM	INCH	MM
.002	0,05	.890	22,61
.010	0,25	.900	22,86
.012	0,30	.998	25,35
.020	0,50	1,083	27,51
.024	0,61		
.039	0,99		
.079	2,00		
.100	2,54		
.150	3,81		
.157	3,99		
.197	5,00		
.200	5,08		
.256	6,50		
.283	7,19		
.300	7,62		
.386	9,80		
.400	10,16		
.484	12,29		
.500	12,70		
.587	14,91		
.600	15,24		
.685	17,40		
.700	17,78		
.787	19,99		
.800	20,32		



MODEL	"A"	"B"
DTS1	.197	—
DTS2	.283	.100
DTS3	.386	.200
DTS4	.484	.300
DTS5	.587	.400
DTS6	.685	.500
DTS7	.787	.600
DTS8	.890	.700
DTS9	.998	.800
DTS10	1,083	.900

2 OBSOLETE

2 OBSOLETE

2 OBSOLETE

OBSOLETE

**SPECIFICATIONS:**

**MATERIAL:**  
 BASE: POLYESTER  
 HOUSING: POLYESTER  
 ACTUATOR: POLYAMIDE  
 MOVING CONTACT: COPPER ALLOY  
 FIXED CONTACTS/TERMINALS: COPPER ALLOY

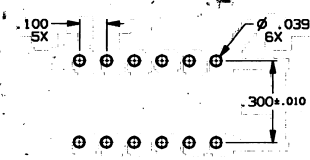
**ELECTRICAL:**  
 CONTACT RATING: NON-SWITCHING: 100 ma @ 50 VDC  
 SWITCHING: 100 ma @ 5 VDC (TYP)  
 25 ma @ 24 VDC (MAX)  
 INITIAL CONTACT RESISTANCE: 100 MEGOHMS MAX.  
 INSULATION RESISTANCE: 100 MEGOHMS MIN.  
 DIELECTRIC STRENGTH: 500 VDC @ SEA LEVEL.  
 LIFE EXPECTANCY: 2,000 CYCLES

**MECHANICAL:**  
 ACTUATION FORCE: 700g MAX.  
 ACTUATION TRAVEL: .079

**ENVIRONMENTAL:**  
 OPERATING TEMPERATURE: +14°F TO +140°F (-10°C TO +60°C)  
 STORAGE TEMPERATURE: -4°F TO +185°F (-20°C TO +85°C)

**NOTES:**

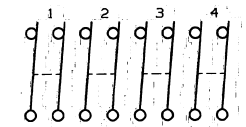
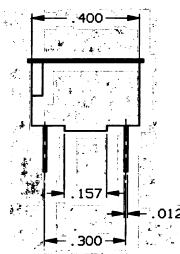
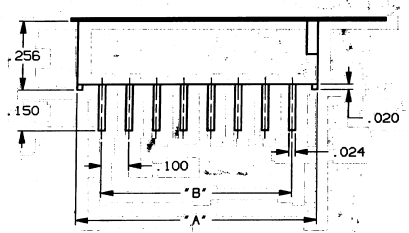
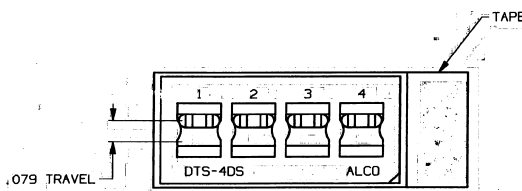
- INTERPRET DRAWING PER ASME Y14.5M-1994.
  - SWITCH SHOWN IN ON POSITION.
- 2 OBSOLETE PARTS: OBSOLETE CIS STREAMLINING PER D.RENAUD/D.SINISI



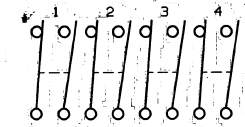
RECOMMENDED HOLE LAYOUT  
 TOLERANCE ±.002 UNLESS OTHERWISE NOTED

OUTLINE DRAWING				SPECIFICATIONS ARE SUBJECT TO CHANGES WITHOUT NOTICE			
<p>THIRD ANGLE PROJECTION</p> <p>TOLERANCES (EXCEPT AS NOTED)            ANGULAR =            DECIMAL .XX = ±.010            DECIMAL .XXX = ±.005            DECIMAL .XXXX =</p> <p>ALSO CONFIDENTIAL            This document contains information which is the exclusive property of Augat, Inc.            Distribution, reproduction or use by others is not permitted without the expressed written consent of Augat, Inc.</p>		<p>UNLESS OTHERWISE SPECIFIED DIMENSIONS ARE IN INCHES DO NOT SCALE PRINT</p> <p>FILE NAME: 08029SIL            DIRECTORY: SWITCHES/DIPSWITCH</p> <p>MATERIAL: SEE SPECIFICATIONS</p> <p>FINISH: SEE SPECIFICATIONS</p>		<p>ORIGINAL DATE OF DRAWING: 10-19-95</p> <p>DRAWN: L. SILVA            CHECKED: DATE:            APPROVED: W. MONTAGUE            DATE: 10-19-95</p> <p>CODE IDENT. NO. 91506            DWG. SIZE C</p> <p>NEXT ASSY:</p>		<p>MADE IN A.C.A.D. (REGISTERED COMPANY) DO NOT REUSE DESIGN, REVISIONS TO BE NOTED.</p> <p><b>AUGAT</b> INC.            352 JOHN QUINCY BLVD.            ATTLEBORO FALLS, MASS. 01763</p> <p>TITLE: <b>OUTLINE DRAWING</b>  <b>DIPSWITCH</b>  <b>DTS***</b></p> <p>DWG. NO. 80629</p> <p>PRODUCT CODE: D13</p> <p>SCALE: SHEET 1 OF 2</p>	

REV	REVISIONS	DATE	BY	APP'D.
0	INITIAL RELEASE	10-19-95	L. SILVA	
1	REVISED	10-22-95	W. MONTAGUE	
A	REVISED PER ECO-09-028495 DR. KK 01FEB10 APP'D. HMK 01FEB10			



CIRCUIT DIAGRAM OF POSITIONS FOR DTS4DS



CIRCUIT DIAGRAM OF POSITIONS FOR DTS4SD

	MODEL	MODEL	"A"	"B"
△	OBSOLETE			
	-DTS1DS	DTS1SD	.203	.100
△	-DTS2DS	DTS2SD	.484	.300
△	-DTS3DS	DTS3SD	.685	.500
△	-DTS4DS	DTS4SD	.890	.700
△	-DTS5DS	DTS5SD	1.083	.900

OUTLINE DRAWING			
SPECIFICATIONS ARE SUBJECT TO CHANGES WITHOUT NOTICE			
TOLERANCES (EXCEPT AS NOTED) ANGULAR = DECIMAL .XXX = ±.010 DECIMAL .XXXX = ALGAT CONFIDENTIAL This document contains information which is the exclusive property of Algot, Inc. Distribution, reproduction or use by others is not permitted without the expressed written consent of Algot, Inc.	UNLESS OTHERWISE SPECIFIED DIMENSIONS ARE IN INCHES DO NOT SCALE PRINT	ORIGINAL DATE OF DRAWING: 10-19-95	452 JOHN DIETSKH ATTLEBORO FALLS, MASS. 02763
	FILE NAME: DIRECTORY: SWITCHES/DIPSWITCH	DRAWN: L. SILVA DATE: 10-19-95	
MATERIAL: SEE SHEET 1	CHECKED: DATE:	APPROVED: <i>[Signature]</i> DATE: 10-19-95	DWG. NO. 80629
FINISH: SEE SHEET 1	CODE IDENT. NO. 91506	DWG. SIZE C	REV. A
	NEXT ASSY:	SCALE:	SHEET 2 OF 2

REV. REVISIONS  
SEE SHEET #1