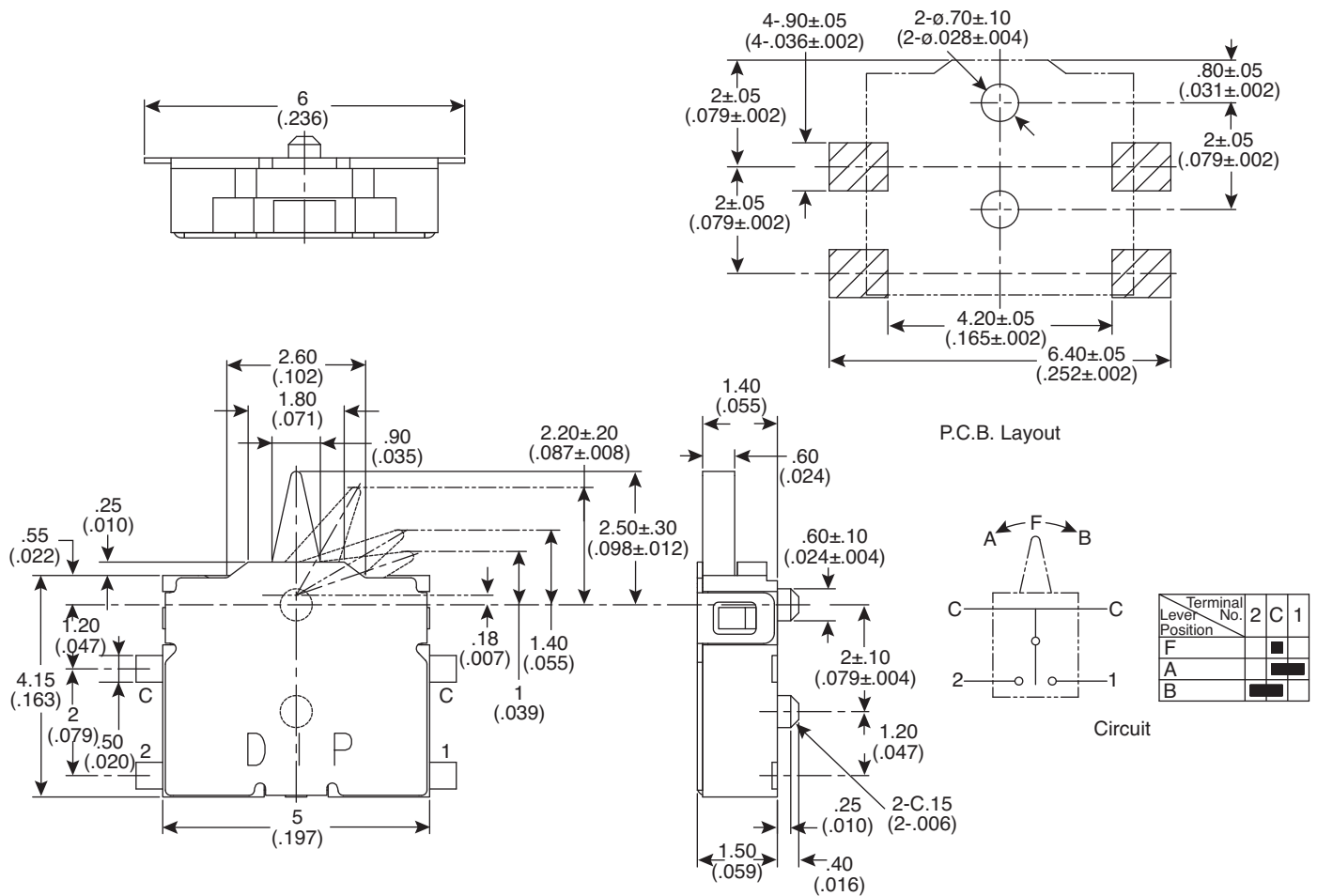


Dimensions: mm (in.)



**Electrical Specifications:**

- Contact Rating: 10mA/5VDC
- Contact Resistance: 500mΩ Max.
- Insulation Resistance: 100VDC 1M±5s 100 MΩ
- Dielectric Strength: 100V AC 1M±5s
- Life: 300,000 Cycles

**Mechanical Specifications:**

- Operating Force: 30gf Max.
- Operating Temperature: -10°C ~ 60°C
- Storage Temperature: -20° ~ 70°C
- Stroke: 1.5±0.3mm

**Note:**

- RoHS Compliant

**Detector Switch**  
104-DTE16-EV



Available from Mouser Electronics

www.mouser.com

1-800-346-6873

Specifications are subject to change without notice. No liability or warranty implied by this information. Environmental compliance based on producer documentation.