

2CPS

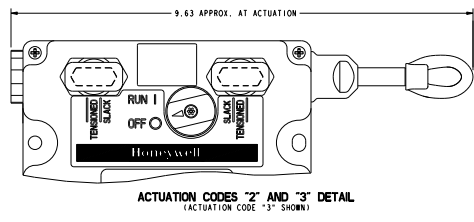
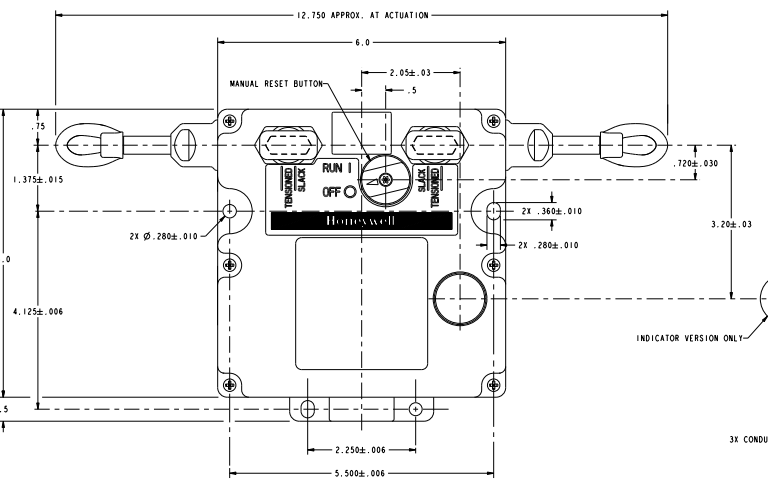
BODY CODE	
A	1/2" NPT
B	PG13,5
C	26mm
D	FF 1/2

CONTACT BLOCK MOUNTING CODE	
1	STANDARD, CONTACT BLOCKS MOUNTED TO HOUSING
2	REMOVABLE CONTACT BLOCKS W/RECEPTACLES

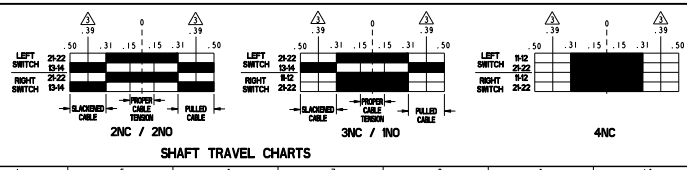
BASIC SWITCH CODE	
A	2NO - 2NC DIRECT ACTING (SWITCH 1: 1NO - 1NC) (SWITCH 2: 1NO - 1NC)
B	1NO - 3NC DIRECT ACTING (SWITCH 1: 1NO - 1NC) (SWITCH 2: 2NC)
D	4NC DIRECT ACTING (SWITCH 1: 2NC) (SWITCH 2: 2NC)

ACTUATION CODE	
1	MAINTAINED BOTH SIDES
2	MAINTAINED LEFT SIDE, NO ACTUATION RIGHT SIDE
3	MAINTAINED RIGHT SIDE, NO ACTUATION LEFT SIDE

INDICATOR-PILOT LIGHT CODE	
A	24V LED CLUSTER
B	120V LED CLUSTER



- NOTES
- HARDWARE PACKET CONSISTING OF TWO CONDUIT THREAD PLUGS AND ONE "J" HOOK TURNBUCKLE FOR EACH ACTUATOR IS INCLUDED WITH PRODUCT.
 - NOMENCLATURE IS PROVIDED FOR IDENTIFICATION OF EXISTING LISTINGS. NOT ALL COMBINATIONS ARE POSSIBLE.
 - POSITIVE OPENING TO IEC/EN60947-5-1.
 - FORCE TO MAINTAIN ACTUATION SHAFT AT PROPER TENSION: 25 LBS. ACTUATION SHAFT OPERATE FORCE: 40 LBS.



ELECTRICAL RATING		ENVIRONMENTAL		APPROVALS
AC		DC		 IEC/EN60947-5-5
A300 Ue	AC15 Ie	G300 Ue	DC13 Ie	
(VOLTS)	(AMPS)	(VOLTS)	(AMPS)	
150	6	24	2.55	
240	3	250	.27	
TEMP. RANGE: +40°C TO 85°C +40°F TO 185°F		STORAGE: -40°C TO 85°C -40°F TO 185°F		
SHOCK: 15G PER IEC 68-2-27		VIBRATION: 5G PER IEC 68-2-4		
UNLESS OTHERWISE SPECIFIED TOLERANCES ARE:		DRAWN		DATE
NO. PLACE	1	040	31	22MAY01
DATE	1	010	30.15	
NO. PLACE	1	015	30.15	
DATE	1	005	0	
THIS DRAWING COVERS A PROPRIETARY ITEM AND IS THE PROPERTY OF HONEYWELL. THIS DRAWING IS NOT TO BE COPIED OR USED WITHOUT THE PERMISSION OF HONEYWELL.		DRAWN		DATE
THIRD ANGLE PROJECTION		DATE		DATE
DIMENSIONS ARE TO BE MET BEFORE PROTECTIVE COATINGS ARE APPLIED		DATE		DATE
SCALE		SCALE		SCALE
1:1		1:1		1:1

Honeywell

SWITCH ASSEMBLY

2CPS SERIES CHART 1

REV 22

SHEET 1 OF 1