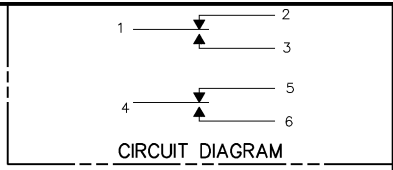


CATALOG LISTING 622EN225-6
 ISSUE 3
 CHECK 40CT95
 DRAWN JJA
 CHECK S A V
 40CT95
 DDM/CAD
 RELEASE NO. PR-21860
 PAGE 1 OF 1
 REPLACES

MICRO SWITCH
a Honeywell Division

SWITCH-ENCLOSED

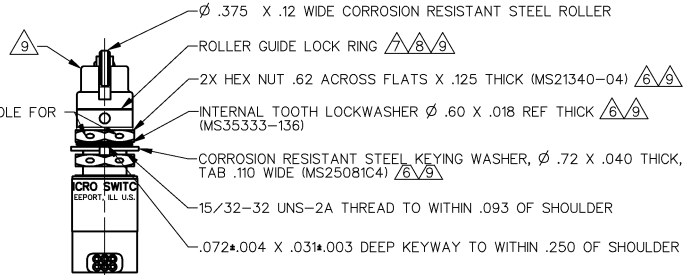
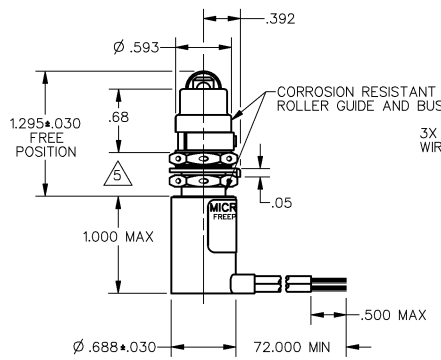
CATALOG LISTING
622EN225-6



ROLLER GUIDE MAY BE LOCKED IN INCREMENTS OF 45° AZIMUTH. IT MAY ALSO BE UNSCREWED AND REMOVED FROM BUSHING TO FACILITATE INSTALLATION Δ

ELECTRICAL RATINGS, GOLD CONTACTS

LOAD	SEA LEVEL			50,000 FT	
	POWER CIRCUIT 28 V DC	ELECTRONIC LOGIC 5 V DC	LOW LEVEL 30mV DC OR PEAK AC	POWER CIRCUIT 28 V DC	ELECTRONIC LOGIC 5 V DC
RES	(A) 1.0	(A) 0.01	0.01	(A) 1.0	(A) 0.01
IND	0.5	---	---	0.5	---



THIS DRAWING COVERS A PROPRIETARY ITEM AND IS THE PROPERTY OF MICRO SWITCH, A DIVISION OF HONEYWELL. THIS DRAWING IS NOT TO BE COPIED OR USED WITHOUT THE APPROVAL OF MICRO SWITCH

CHARACTERISTICS	ELECTRICAL DATA (SEE CHART)
OPERATING FORCE	CONTACT ARRANGEMENT
3 - 6 LB	4X S P D T
FULL OVERTRAVEL FORCE	
17 LB MAX	
RELEASE FORCE	
2 LB MIN	
PRETRAVEL	
.040 MAX	
DIFFERENTIAL TRAVEL	
.020 MAX	
OVERTRAVEL	
.125 MIN	

THIRD ANGLE PROJECTION	
SCALE FULL	
DO NOT SCALE PRINT	
UNLESS OTHERWISE SPECIFIED TOLERANCES ARE	
ONE PLACE	(.0) ± .030
TWO PLACE	(.00) ± .015
THREE PLACE	(.000) ± .005
ANGLES	±
WEIGHT	.50 LB

- 1 - CORROSION RESISTANT STEEL ENCLOSURE
- 2 - SWITCH SEALED PER MIL-S-8805 SYMBOL 4
- 3 - CIRCUIT DIAGRAM AND CATALOG LISTING ARE SHOWN ON NAMEPLATE
- 4 - TO ADJUST ROLLER DIRECTION REMOVE ROLLER GUIDE LOCK RING
- 5 - TO DESIRED DIRECTION, SECURE BY REPLACING ROLLER GUIDE LOCK RING
- 6 - ROLLER GUIDE LOCATION CAN VARY BETWEEN .292 AND .450 WHILE MAINTAINING .125 MIN OVERTRAVEL
- 7 - REPLACEMENT MOUNTING HARDWARE - PACKET 19PA9
- 8 - REPLACEMENT ROLLER GUIDE AND LOCK RING - PACKET 15PA105
- 9 - REPLACEMENT LOCK RING - PACKET 15PA107
- 10 - HARDWARE MAY BE PACKAGED UNASSEMBLED PER MIL-S-8805
- 11 - COINCIDENCE OF OPERATING AND RELEASING POINTS: .010 INCH OF PLUNGER TRAVEL

ANSI Y14.5M-1982 APPLIES