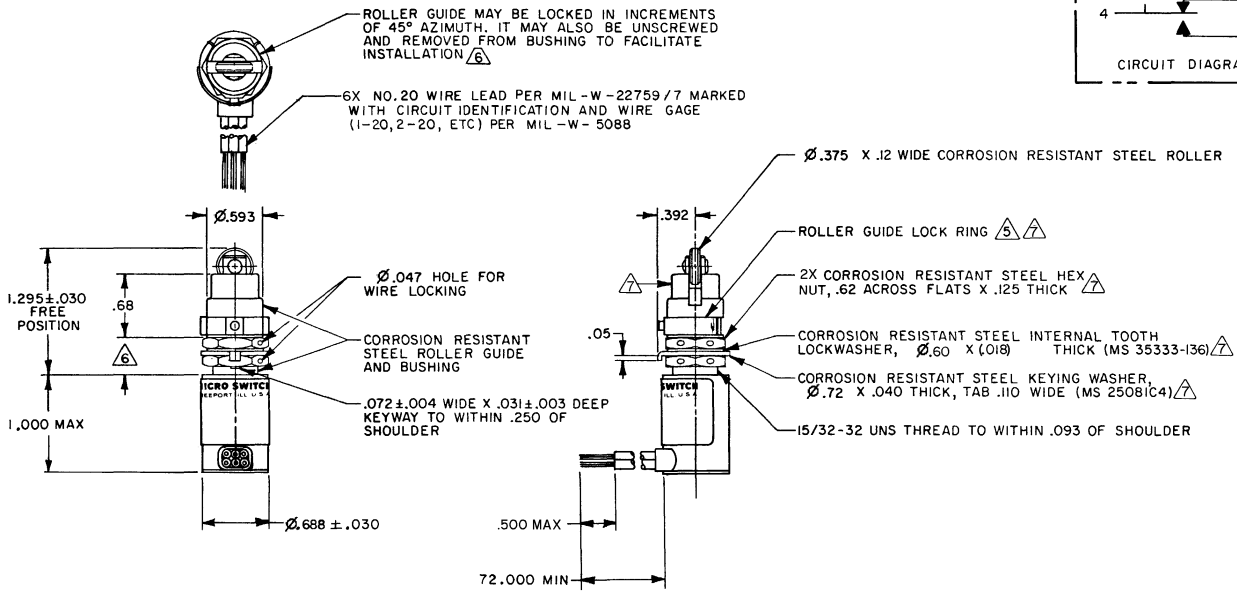
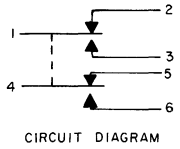


**MICRO SWITCH**  
 FREEPORT ILLINOIS U.S.A.  
 A DIVISION OF HONEYWELL  
 FED. MFG. CODE 81929

**SWITCH - ENCLOSED**

CATALOG LISTING  
**622EN25-6**



DRAWING NUMBER: 622EN25-6  
 PAGE 1 OF 1  
 ISSUE: 16  
 REVISIONS:  
 A CO44354  
 B MAY 80  
 C MAY 80  
 D MAY 80  
 E MAY 80  
 F MAY 80  
 G MAY 80  
 H MAY 80  
 I MAY 80  
 J MAY 80  
 K MAY 80  
 L MAY 80  
 M MAY 80  
 N MAY 80  
 O MAY 80  
 P MAY 80  
 Q MAY 80  
 R MAY 80  
 S MAY 80  
 T MAY 80  
 U MAY 80  
 V MAY 80  
 W MAY 80  
 X MAY 80  
 Y MAY 80  
 Z MAY 80  
 AA MAY 80  
 AB MAY 80  
 AC MAY 80  
 AD MAY 80  
 AE MAY 80  
 AF MAY 80  
 AG MAY 80  
 AH MAY 80  
 AI MAY 80  
 AJ MAY 80  
 AK MAY 80  
 AL MAY 80  
 AM MAY 80  
 AN MAY 80  
 AO MAY 80  
 AP MAY 80  
 AQ MAY 80  
 AR MAY 80  
 AS MAY 80  
 AT MAY 80  
 AU MAY 80  
 AV MAY 80  
 AW MAY 80  
 AX MAY 80  
 AY MAY 80  
 AZ MAY 80  
 BA MAY 80  
 BB MAY 80  
 BC MAY 80  
 BD MAY 80  
 BE MAY 80  
 BF MAY 80  
 BG MAY 80  
 BH MAY 80  
 BI MAY 80  
 BJ MAY 80  
 BK MAY 80  
 BL MAY 80  
 BM MAY 80  
 BN MAY 80  
 BO MAY 80  
 BP MAY 80  
 BQ MAY 80  
 BR MAY 80  
 BS MAY 80  
 BT MAY 80  
 BU MAY 80  
 BV MAY 80  
 BW MAY 80  
 BX MAY 80  
 BY MAY 80  
 BZ MAY 80  
 CA MAY 80  
 CB MAY 80  
 CC MAY 80  
 CD MAY 80  
 CE MAY 80  
 CF MAY 80  
 CG MAY 80  
 CH MAY 80  
 CI MAY 80  
 CJ MAY 80  
 CK MAY 80  
 CL MAY 80  
 CM MAY 80  
 CN MAY 80  
 CO MAY 80  
 CP MAY 80  
 CQ MAY 80  
 CR MAY 80  
 CS MAY 80  
 CT MAY 80  
 CU MAY 80  
 CV MAY 80  
 CW MAY 80  
 CX MAY 80  
 CY MAY 80  
 CZ MAY 80  
 DA MAY 80  
 DB MAY 80  
 DC MAY 80  
 DD MAY 80  
 DE MAY 80  
 DF MAY 80  
 DG MAY 80  
 DH MAY 80  
 DI MAY 80  
 DJ MAY 80  
 DK MAY 80  
 DL MAY 80  
 DM MAY 80  
 DN MAY 80  
 DO MAY 80  
 DP MAY 80  
 DQ MAY 80  
 DR MAY 80  
 DS MAY 80  
 DT MAY 80  
 DU MAY 80  
 DV MAY 80  
 DW MAY 80  
 DX MAY 80  
 DY MAY 80  
 DZ MAY 80  
 EA MAY 80  
 EB MAY 80  
 EC MAY 80  
 ED MAY 80  
 EE MAY 80  
 EF MAY 80  
 EG MAY 80  
 EH MAY 80  
 EI MAY 80  
 EJ MAY 80  
 EK MAY 80  
 EL MAY 80  
 EM MAY 80  
 EN MAY 80  
 EO MAY 80  
 EP MAY 80  
 EQ MAY 80  
 ER MAY 80  
 ES MAY 80  
 ET MAY 80  
 EU MAY 80  
 EV MAY 80  
 EW MAY 80  
 EX MAY 80  
 EY MAY 80  
 EZ MAY 80  
 FA MAY 80  
 FB MAY 80  
 FC MAY 80  
 FD MAY 80  
 FE MAY 80  
 FF MAY 80  
 FG MAY 80  
 FH MAY 80  
 FI MAY 80  
 FJ MAY 80  
 FK MAY 80  
 FL MAY 80  
 FM MAY 80  
 FN MAY 80  
 FO MAY 80  
 FP MAY 80  
 FQ MAY 80  
 FR MAY 80  
 FS MAY 80  
 FT MAY 80  
 FU MAY 80  
 FV MAY 80  
 FW MAY 80  
 FX MAY 80  
 FY MAY 80  
 FZ MAY 80  
 GA MAY 80  
 GB MAY 80  
 GC MAY 80  
 GD MAY 80  
 GE MAY 80  
 GF MAY 80  
 GG MAY 80  
 GH MAY 80  
 GI MAY 80  
 GJ MAY 80  
 GK MAY 80  
 GL MAY 80  
 GM MAY 80  
 GN MAY 80  
 GO MAY 80  
 GP MAY 80  
 GQ MAY 80  
 GR MAY 80  
 GS MAY 80  
 GT MAY 80  
 GU MAY 80  
 GV MAY 80  
 GW MAY 80  
 GX MAY 80  
 GY MAY 80  
 GZ MAY 80  
 HA MAY 80  
 HB MAY 80  
 HC MAY 80  
 HD MAY 80  
 HE MAY 80  
 HF MAY 80  
 HG MAY 80  
 HH MAY 80  
 HI MAY 80  
 HJ MAY 80  
 HK MAY 80  
 HL MAY 80  
 HM MAY 80  
 HN MAY 80  
 HO MAY 80  
 HP MAY 80  
 HQ MAY 80  
 HR MAY 80  
 HS MAY 80  
 HT MAY 80  
 HU MAY 80  
 HV MAY 80  
 HW MAY 80  
 HX MAY 80  
 HY MAY 80  
 HZ MAY 80  
 IA MAY 80  
 IB MAY 80  
 IC MAY 80  
 ID MAY 80  
 IE MAY 80  
 IF MAY 80  
 IG MAY 80  
 IH MAY 80  
 II MAY 80  
 IJ MAY 80  
 IK MAY 80  
 IL MAY 80  
 IM MAY 80  
 IN MAY 80  
 IO MAY 80  
 IP MAY 80  
 IQ MAY 80  
 IR MAY 80  
 IS MAY 80  
 IT MAY 80  
 IU MAY 80  
 IV MAY 80  
 IW MAY 80  
 IX MAY 80  
 IY MAY 80  
 IZ MAY 80  
 JA MAY 80  
 JB MAY 80  
 JC MAY 80  
 JD MAY 80  
 JE MAY 80  
 JF MAY 80  
 JG MAY 80  
 JH MAY 80  
 JI MAY 80  
 JJ MAY 80  
 JK MAY 80  
 JL MAY 80  
 JM MAY 80  
 JN MAY 80  
 JO MAY 80  
 JP MAY 80  
 JQ MAY 80  
 JR MAY 80  
 JS MAY 80  
 JT MAY 80  
 JU MAY 80  
 JV MAY 80  
 JW MAY 80  
 JX MAY 80  
 JY MAY 80  
 JZ MAY 80  
 KA MAY 80  
 KB MAY 80  
 KC MAY 80  
 KD MAY 80  
 KE MAY 80  
 KF MAY 80  
 KG MAY 80  
 KH MAY 80  
 KI MAY 80  
 KJ MAY 80  
 KK MAY 80  
 KL MAY 80  
 KM MAY 80  
 KN MAY 80  
 KO MAY 80  
 KP MAY 80  
 KQ MAY 80  
 KR MAY 80  
 KS MAY 80  
 KT MAY 80  
 KU MAY 80  
 KV MAY 80  
 KW MAY 80  
 KX MAY 80  
 KY MAY 80  
 KZ MAY 80  
 LA MAY 80  
 LB MAY 80  
 LC MAY 80  
 LD MAY 80  
 LE MAY 80  
 LF MAY 80  
 LG MAY 80  
 LH MAY 80  
 LI MAY 80  
 LJ MAY 80  
 LK MAY 80  
 LL MAY 80  
 LM MAY 80  
 LN MAY 80  
 LO MAY 80  
 LP MAY 80  
 LQ MAY 80  
 LR MAY 80  
 LS MAY 80  
 LT MAY 80  
 LU MAY 80  
 LV MAY 80  
 LW MAY 80  
 LX MAY 80  
 LY MAY 80  
 LZ MAY 80  
 MA MAY 80  
 MB MAY 80  
 MC MAY 80  
 MD MAY 80  
 ME MAY 80  
 MF MAY 80  
 MG MAY 80  
 MH MAY 80  
 MI MAY 80  
 MJ MAY 80  
 MK MAY 80  
 ML MAY 80  
 MM MAY 80  
 MN MAY 80  
 MO MAY 80  
 MP MAY 80  
 MQ MAY 80  
 MR MAY 80  
 MS MAY 80  
 MT MAY 80  
 MU MAY 80  
 MV MAY 80  
 MW MAY 80  
 MX MAY 80  
 MY MAY 80  
 MZ MAY 80  
 NA MAY 80  
 NB MAY 80  
 NC MAY 80  
 ND MAY 80  
 NE MAY 80  
 NF MAY 80  
 NG MAY 80  
 NH MAY 80  
 NI MAY 80  
 NJ MAY 80  
 NK MAY 80  
 NL MAY 80  
 NM MAY 80  
 NN MAY 80  
 NO MAY 80  
 NP MAY 80  
 NQ MAY 80  
 NR MAY 80  
 NS MAY 80  
 NT MAY 80  
 NU MAY 80  
 NV MAY 80  
 NW MAY 80  
 NX MAY 80  
 NY MAY 80  
 NZ MAY 80  
 OA MAY 80  
 OB MAY 80  
 OC MAY 80  
 OD MAY 80  
 OE MAY 80  
 OF MAY 80  
 OG MAY 80  
 OH MAY 80  
 OI MAY 80  
 OJ MAY 80  
 OK MAY 80  
 OL MAY 80  
 OM MAY 80  
 ON MAY 80  
 OO MAY 80  
 OP MAY 80  
 OQ MAY 80  
 OR MAY 80  
 OS MAY 80  
 OT MAY 80  
 OU MAY 80  
 OV MAY 80  
 OW MAY 80  
 OX MAY 80  
 OY MAY 80  
 OZ MAY 80  
 PA MAY 80  
 PB MAY 80  
 PC MAY 80  
 PD MAY 80  
 PE MAY 80  
 PF MAY 80  
 PG MAY 80  
 PH MAY 80  
 PI MAY 80  
 PJ MAY 80  
 PK MAY 80  
 PL MAY 80  
 PM MAY 80  
 PN MAY 80  
 PO MAY 80  
 PP MAY 80  
 PQ MAY 80  
 PR MAY 80  
 PS MAY 80  
 PT MAY 80  
 PU MAY 80  
 PV MAY 80  
 PW MAY 80  
 PX MAY 80  
 PY MAY 80  
 PZ MAY 80  
 QA MAY 80  
 QB MAY 80  
 QC MAY 80  
 QD MAY 80  
 QE MAY 80  
 QF MAY 80  
 QG MAY 80  
 QH MAY 80  
 QI MAY 80  
 QJ MAY 80  
 QK MAY 80  
 QL MAY 80  
 QM MAY 80  
 QN MAY 80  
 QO MAY 80  
 QP MAY 80  
 QQ MAY 80  
 QR MAY 80  
 QS MAY 80  
 QT MAY 80  
 QU MAY 80  
 QV MAY 80  
 QW MAY 80  
 QX MAY 80  
 QY MAY 80  
 QZ MAY 80  
 RA MAY 80  
 RB MAY 80  
 RC MAY 80  
 RD MAY 80  
 RE MAY 80  
 RF MAY 80  
 RG MAY 80  
 RH MAY 80  
 RI MAY 80  
 RJ MAY 80  
 RK MAY 80  
 RL MAY 80  
 RM MAY 80  
 RN MAY 80  
 RO MAY 80  
 RP MAY 80  
 RQ MAY 80  
 RR MAY 80  
 RS MAY 80  
 RT MAY 80  
 RU MAY 80  
 RV MAY 80  
 RW MAY 80  
 RX MAY 80  
 RY MAY 80  
 RZ MAY 80  
 SA MAY 80  
 SB MAY 80  
 SC MAY 80  
 SD MAY 80  
 SE MAY 80  
 SF MAY 80  
 SG MAY 80  
 SH MAY 80  
 SI MAY 80  
 SJ MAY 80  
 SK MAY 80  
 SL MAY 80  
 SM MAY 80  
 SN MAY 80  
 SO MAY 80  
 SP MAY 80  
 SQ MAY 80  
 SR MAY 80  
 SS MAY 80  
 ST MAY 80  
 SU MAY 80  
 SV MAY 80  
 SW MAY 80  
 SX MAY 80  
 SY MAY 80  
 SZ MAY 80  
 TA MAY 80  
 TB MAY 80  
 TC MAY 80  
 TD MAY 80  
 TE MAY 80  
 TF MAY 80  
 TG MAY 80  
 TH MAY 80  
 TI MAY 80  
 TJ MAY 80  
 TK MAY 80  
 TL MAY 80  
 TM MAY 80  
 TN MAY 80  
 TO MAY 80  
 TP MAY 80  
 TQ MAY 80  
 TR MAY 80  
 TS MAY 80  
 TT MAY 80  
 TU MAY 80  
 TV MAY 80  
 TW MAY 80  
 TX MAY 80  
 TY MAY 80  
 TZ MAY 80  
 UA MAY 80  
 UB MAY 80  
 UC MAY 80  
 UD MAY 80  
 UE MAY 80  
 UF MAY 80  
 UG MAY 80  
 UH MAY 80  
 UI MAY 80  
 UJ MAY 80  
 UK MAY 80  
 UL MAY 80  
 UM MAY 80  
 UN MAY 80  
 UO MAY 80  
 UP MAY 80  
 UQ MAY 80  
 UR MAY 80  
 US MAY 80  
 UT MAY 80  
 UY MAY 80  
 UZ MAY 80  
 VA MAY 80  
 VB MAY 80  
 VC MAY 80  
 VD MAY 80  
 VE MAY 80  
 VF MAY 80  
 VG MAY 80  
 VH MAY 80  
 VI MAY 80  
 VJ MAY 80  
 VK MAY 80  
 VL MAY 80  
 VM MAY 80  
 VN MAY 80  
 VO MAY 80  
 VP MAY 80  
 VQ MAY 80  
 VR MAY 80  
 VS MAY 80  
 VT MAY 80  
 VU MAY 80  
 VV MAY 80  
 VW MAY 80  
 VX MAY 80  
 VY MAY 80  
 VZ MAY 80  
 WA MAY 80  
 WB MAY 80  
 WC MAY 80  
 WD MAY 80  
 WE MAY 80  
 WF MAY 80  
 WG MAY 80  
 WH MAY 80  
 WI MAY 80  
 WJ MAY 80  
 WK MAY 80  
 WL MAY 80  
 WM MAY 80  
 WN MAY 80  
 WO MAY 80  
 WP MAY 80  
 WQ MAY 80  
 WR MAY 80  
 WS MAY 80  
 WT MAY 80  
 WY MAY 80  
 WZ MAY 80  
 XA MAY 80  
 XB MAY 80  
 XC MAY 80  
 XD MAY 80  
 XE MAY 80  
 XF MAY 80  
 XG MAY 80  
 XH MAY 80  
 XI MAY 80  
 XJ MAY 80  
 XK MAY 80  
 XL MAY 80  
 XM MAY 80  
 XN MAY 80  
 XO MAY 80  
 XP MAY 80  
 XQ MAY 80  
 XR MAY 80  
 XS MAY 80  
 XT MAY 80  
 XU MAY 80  
 XV MAY 80  
 XW MAY 80  
 XX MAY 80  
 XY MAY 80  
 XZ MAY 80  
 YA MAY 80  
 YB MAY 80  
 YC MAY 80  
 YD MAY 80  
 YE MAY 80  
 YF MAY 80  
 YG MAY 80  
 YH MAY 80  
 YI MAY 80  
 YJ MAY 80  
 YK MAY 80  
 YL MAY 80  
 YM MAY 80  
 YN MAY 80  
 YO MAY 80  
 YP MAY 80  
 YQ MAY 80  
 YR MAY 80  
 YS MAY 80  
 YT MAY 80  
 YU MAY 80  
 YV MAY 80  
 YW MAY 80  
 YX MAY 80  
 YY MAY 80  
 YZ MAY 80  
 ZA MAY 80  
 ZB MAY 80  
 ZC MAY 80  
 ZD MAY 80  
 ZE MAY 80  
 ZF MAY 80  
 ZG MAY 80  
 ZH MAY 80  
 ZI MAY 80  
 ZJ MAY 80  
 ZK MAY 80  
 ZL MAY 80  
 ZM MAY 80  
 ZN MAY 80  
 ZO MAY 80  
 ZP MAY 80  
 ZQ MAY 80  
 ZR MAY 80  
 ZS MAY 80  
 ZT MAY 80  
 ZU MAY 80  
 ZV MAY 80  
 ZW MAY 80  
 ZX MAY 80  
 ZY MAY 80  
 ZZ MAY 80

ANSI Y14.5M-1982 APPLIES

THIS DRAWING COVERS A PROPRIETARY ITEM AND IS THE PROPERTY OF MICRO SWITCH, A DIVISION OF HONEYWELL. THIS DRAWING IS NOT TO BE COPIED OR USED WITHOUT THE APPROVAL OF MICRO SWITCH.		THIRD ANGLE PROJECTION	SCALE FULL
CHARACTERISTICS		ELECTRICAL DATA	DO NOT SCALE PRINT
OPERATING FORCE	6 - 12 LB	CONTACT ARRANGEMENT	APPLY TO DESIGN LIMITS. CONVERSIONS ARE ONLY FOR REFERENCE UNLESS NOTED TOLERANCES ARE 2
FULL OVERTRAVEL FORCE	30 LB MAX	S P D T (2)	TOLERANCES
RELEASE FORCE	4 LB MIN	28 VDC	NO PLACES DIM. OVER
PRETRAVEL	.040 MAX	SEA LEVEL 50,000 FT.	DIM. UNDER
DIFFERENTIAL TRAVEL	.020 MAX	RES 7	FINISH
OVERTRAVEL	.125 MIN	IND 4	USE CUSTOMARY
		MOTOR 4	DESIGN UNITS
		LAMP	WEIGHT 7.2 OZ MAX

- NOTES
- CORROSION RESISTANT STEEL ENCLOSURE
  - SWITCH SEALED PER MIL-PRF-8805 SYMBOL 4
  - CATALOG LISTING, CIRCUIT DIAGRAM, DATE CODE AND "500" ARE SHOWN ON NAMEPLATE
  - COINCIDENCE OF OPERATING AND RELEASING POINTS: .010 OF PLUNGER TRAVEL
- (A) TO ADJUST ROLLER DIRECTION REMOVE GUIDE LOCK RING, SCREW ROLLER GUIDE TO DESIRED DIRECTION, SECURE BY REPLACING ROLLER GUIDE LOCK RING
- (A) THE ROLLER GUIDE LOCATION COULD GO TO A MINIMUM OF .292 AND CAN BE ADJUSTED TO .450 MAX AND STILL MAINTAIN A .125 MIN OVERTRAVEL
- (A) HARDWARE MAY BE PACKAGED UNASSEMBLED PER MIL-PRF-8805