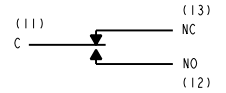


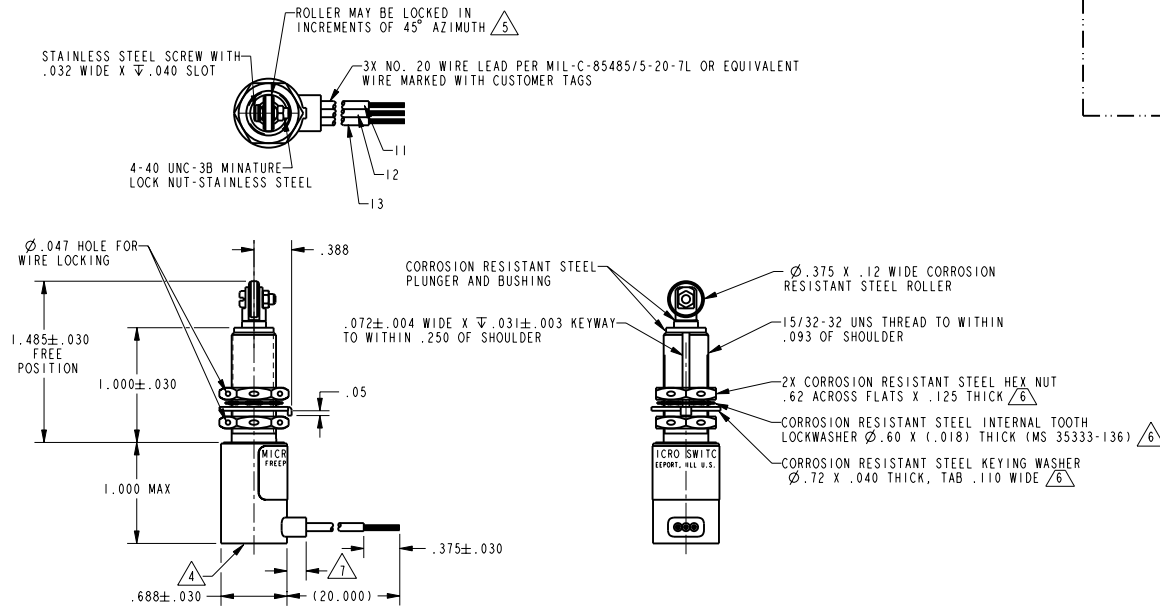
MICRO SWITCH
a Honeywell Division
FED. MFG. CODE 91929

SWITCH-ENCLOSED

CATALOG LISTING
622EN95



CIRCUIT DIAGRAM



CATALOG LISTING
622EN95
 ISSUE 4
 REVISIONS
 A 206228
 D L T 8 AUG 02
 PTC/CAD 20
 D L T 8 AUG 02
 CHECK SAV 8 AUG 02
 CHECK
 RELEASE NO. PR-22337
 REPLACES

THIS DRAWING COVERS A PROPRIETARY ITEM AND IS THE PROPERTY OF MICRO SWITCH, A DIVISION OF HONEYWELL. THIS DRAWING IS NOT TO BE COPIED OR USED WITHOUT THE APPROVAL OF MICRO SWITCH

CHARACTERISTICS	ELECTRICAL DATA
OPERATING FORCE ----- 6-12 LB	CONTACT ARRANGEMENT 2X SPDT
FULL OVERTRAVEL FORCE ----- 30 LB MAX	28 VDC
RELEASE FORCE ----- 4 LB MIN	SEA LEVEL 50,000 FT.
PRETRAVEL ----- .040 MAX	RES 7 7
DIFFERENTIAL TRAVEL ----- .020 MAX	IND 4 2.5
OVERTRAVEL ----- .125 MIN	MOTOR 4
	LAMP

THIRD ANGLE PROJECTION	SCALE FULL
	DO NOT SCALE PRINT
	UNLESS OTHERWISE SPECIFIED TOLERANCES ARE
	ONE PLACE (.01) \pm .030
	TWO PLACE (.00) \pm .015
	THREE PLACE (.000) \pm .005
	ANGLES \pm
	WEIGHT

- NOTES
- 1 - CORROSION RESISTANT STEEL ENCLOSURE
 - 2 - SWITCH SEALED PER MIL-S-8805 SYMBOL 4
 - 3 - CIRCUIT DIAGRAM, CATALOG LISTING, AND DATE CODE ARE SHOWN ON NAMEPLATE
 - 4 - SILICONE POTTING MATERIAL FLUSH TO .070 UNDERFLUSH OF HOUSING TO ADJUST ROLLER DIRECTION: REMOVE LOCK NUT, SCREW AND ROLLER, DEPRESS PLUNGER UNTIL IT CAN BE ROTATED TO DESIRED ROLLER POSITION, RETURN PLUNGER TO FREE POSITION AND REASSEMBLE ROLLER
 - 5 - HARDWARE MAY BE PACKAGED UNASSEMBLED PER MIL-S-8805
 - 6 - SILICONE POTTING MATERIAL .175 MAX FROM HOUSING

ANSI Y14.5M-1982 APPLIES