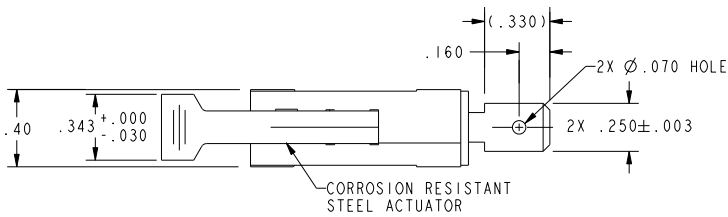
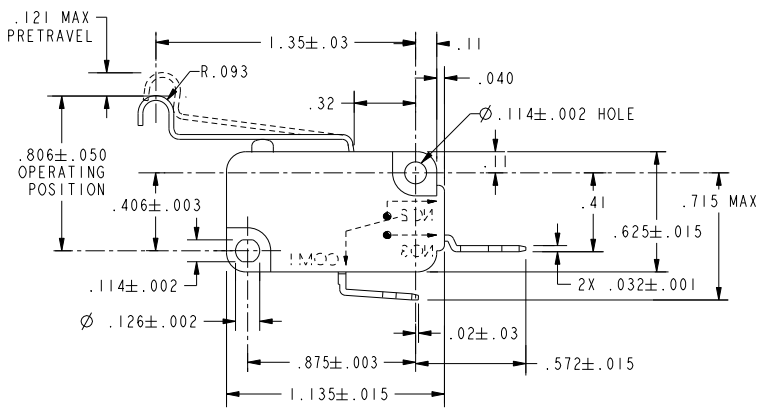


**CW-B9435**



CORROSION RESISTANT STEEL ACTUATOR

**NOTES**  
 1 - SILVER PLATED TERMINALS  
 2 - TESTED TO SHOW COMPLIANCE WITH UL 858 OVEN LATCH REQUIREMENTS UNDER THE FOLLOWING PARAMETERS: ELECTRICAL ENDURANCE FOR 100K OPERATIONS AT 200°C FOR 250 HOURS MINIMUM WHILE CONTROLLING AN INDUCTIVE LOAD OF 6A, 277VAC



CHARACTERISTICS	
OPERATING FORCE-----	66 GRAMS MAX
RELEASE FORCE-----	5 GRAMS MIN
DIFFERENTIAL TRAVEL-----	.027 MAX
OVERTRAVEL-----	.068 MIN
RELEASE TRAVEL-----	.016 MIN

ELECTRICAL DATA	
CONTACT ARRANGEMENT S P N O	
L278 6A, 1/8HP 125, 250 OR 277 VAC	

UNLESS OTHERWISE SPECIFIED TOLERANCES ARE:	
NO PLACE	X ±.040 ±1
ONE PLACE	.X ±.030 ±0,4
TWO PLACE	.XX ±.015 ±0,15
THREE PLACE	.XXX ±.005 ±
ANGLES	± ±
RAW MATERIAL-COMMERCIAL STANDARD	
THIRD ANGLE PROJECTION	

DRAWN	TSM	5FEB02
CHECK	SAV	5FEB02
THIS DRAWING COVERS A PROPRIETARY ITEM AND IS THE PROPERTY OF HONEYWELL. THIS DRAWING IS NOT TO BE COPIED OR USED WITHOUT THE PERMISSION OF HONEYWELL.		
DIMENSIONS ARE TO BE MET BEFORE PROTECTIVE COATINGS ARE APPLIED		
PTC 2D	ASME Y14.5M-1994	

<b>Honeywell</b>			
TITLE <b>SWITCH, BASIC</b>			
SIZE	DWG TYPE	DRAWING NAME	REV
<b>B</b>	<b>I</b>	<b>V7-IX2AE9-295</b>	<b>4</b>
SCALE	2:1	WEIGHT	SHEET 1 OF 1