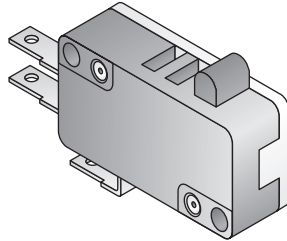
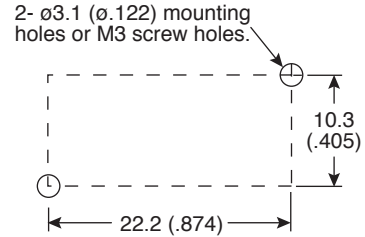


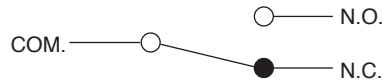
Dimensions: mm (In.)



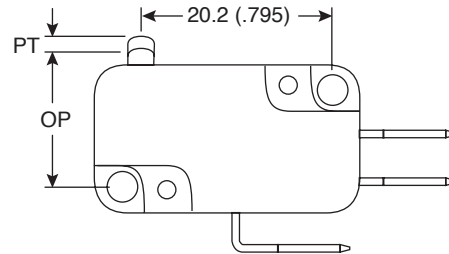
MOUNTING HOLES



CONTACT CONFIGURATION

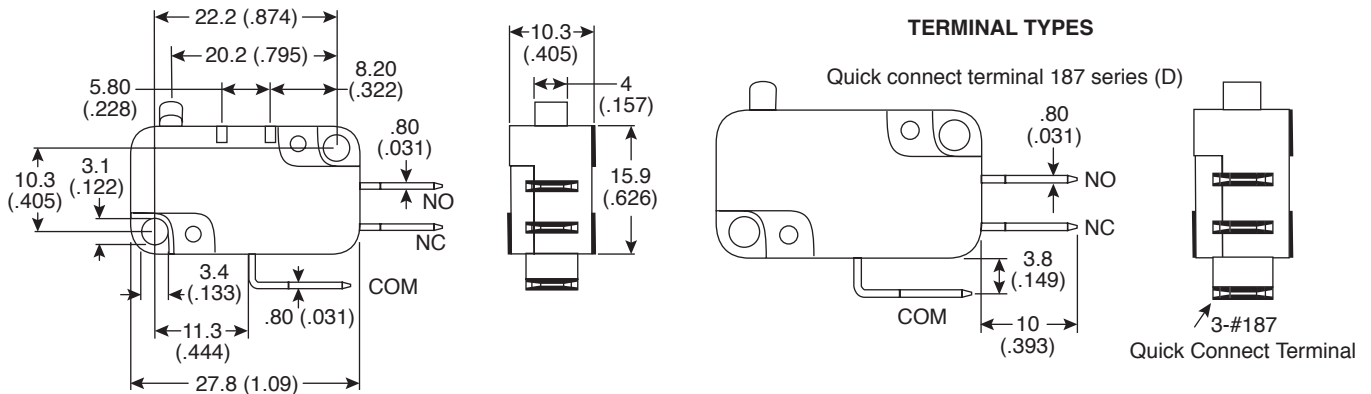


OPERATING CHARACTERISTICS



TERMINAL TYPES

Quick connect terminal 187 series (D)



**Electrical Specifications:**

- Rating: 16A/125-250VAC
- Insulation Resistance (at 500VDC): 100M $\Omega$  Min.
- Dielectric Strength: 1,000VAC RMS(50-60HZ)
- Contact Resistance (Initial): 30m $\Omega$  Max.
- Electrical Operating Frequency: 10-30 operations/min.
- Operating Speed: 0.1mm to 1m/sec.
- Electrical Life: 6,000~100,000 operations(Min.)

**Mechanical Specifications:**

- Mechanical Operating Frequency: 300 operations/min.
- Mechanical Life: 5,000,000 operations(Min.)

**Operating Characteristics:**

- OF (g) max: 373
- OP (mm): 14.7 $\pm$ 0.5
- PT max: 1.90mm
- OT min (mm): 0.70
- MD max (mm): 1.20

**Miniature Snap Switch**  
SNS73-16-373XX-Q21



Available from Mouser Electronics

www.mouser.com

1-800-346-6873