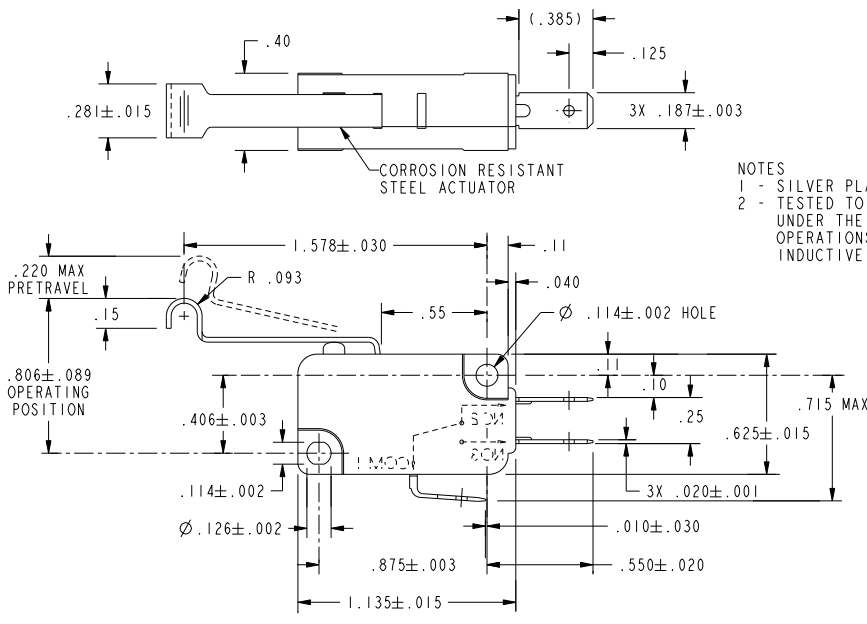


CW-B9417

REV	DOCUMENT	CHANGED BY	CHECK
7	0013134	NM 13MAY05	AK



NOTES  
 1 - SILVER PLATED TERMINALS  
 2 - TESTED TO SHOW COMPLIANCE WITH UL 858 OVEN LATCH REQUIREMENTS UNDER THE FOLLOWING PARAMETERS: ELECTRICAL ENDURANCE FOR 100K OPERATIONS AT 200°C FOR 250 HOURS MINIMUM WHILE CONTROLLING AN INDUCTIVE LOAD OF 6A, 277VAC

<b>CHARACTERISTICS</b> OPERATING FORCE----- 34 GRAMS MAX RELEASE FORCE----- 2 GRAMS MIN DIFFERENTIAL TRAVEL----- .051 MAX OVERTRAVEL----- .114 MIN RELEASE TRAVEL----- .030 MIN		<b>ELECTRICAL DATA</b> CONTACT ARRANGEMENT S P D T L278 6A, 178HP 125, 250 OR 277 VAC 		UNLESS OTHERWISE SPECIFIED TOLERANCES ARE: NO PLACE X ±.040 ±1 ONE PLACE .X ±.030 ±0.4 TWO PLACE .XX ±.015 ±0.15 THREE PLACE .XXX ±.005 ± ANGLES ± ± RAW MATERIAL-COMMERCIAL STANDARD		DRAWN TSM 19MAR01 CHECK SAV 19MAR01 THIS DRAWING COVERS A PROPRIETARY ITEM AND IS THE PROPERTY OF HONEYWELL. THIS DRAWING IS NOT TO BE COPIED OR USED WITHOUT THE PERMISSION OF HONEYWELL. DIMENSIONS ARE TO BE MET BEFORE PROTECTIVE COATINGS ARE APPLIED PTC 2D ASME Y14.5M-1994		<b>Honeywell</b> TITLE <b>SWITCH, BASIC</b> SIZE DWG TYPE DRAWING NAME REV <b>B I V7-1X1AD8-304 7</b>	
THIRD ANGLE PROJECTION 				SCALE 2 : 1		SHEET 1 OF 1			