

MICRO SWITCH
a Honeywell Division

FED. MFG. CODE 91929

SWITCH - BASIC

CATALOG LISTING
V7-5F27D8-000-2

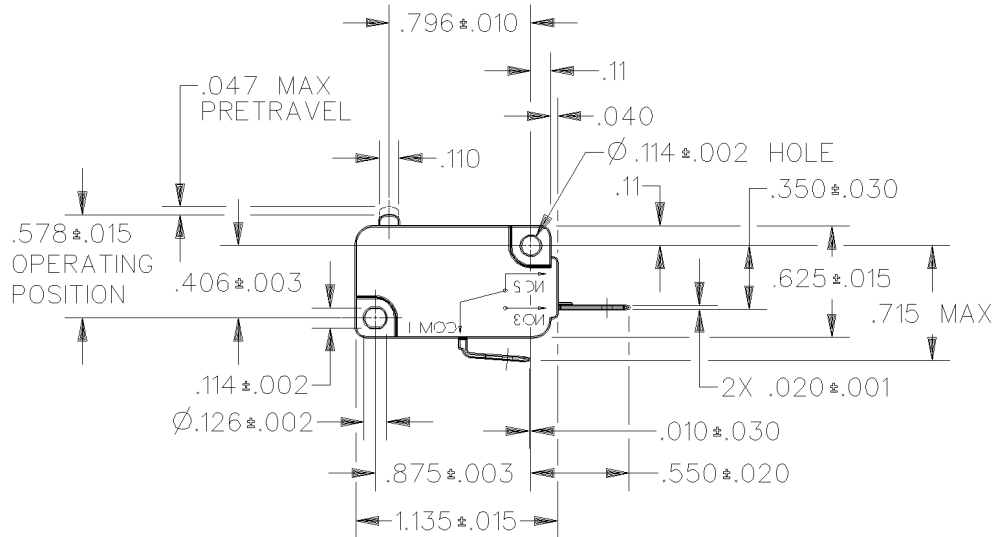
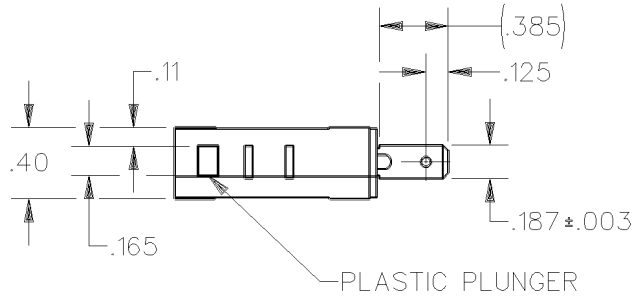
CW-C5036

CATALOG LISTING
V7-5F27D8-000-2
PAGE 1 OF 1
REPLACES
RELEASE NO PR-21371

ISSUE
2

REVISIONS
A REL PR21371
DCS 25 OCT 94

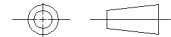
DDM/CAD
DRAWN
DCS 17 JUN 94
CHECK




ANSI Y14.5M-1982 APPLIES

THIS DRAWING COVERS A PROPRIETARY ITEM AND IS THE PROPERTY OF MICRO SWITCH, A DIVISION OF HONEYWELL. THIS DRAWING IS NOT TO BE COPIED OR USED WITHOUT THE APPROVAL OF MICRO SWITCH.

THIRD ANGLE PROJECTION



CHARACTERISTICS	ELECTRICAL DATA	SCALE FULL	DO NOT SCALE PRINT
OPERATING FORCE — — — 8-18 GRAMS	CONTACT ARRANGEMENT S P N O	UNLESS OTHERWISE SPECIFIED TOLERANCES ARE ONE PLACE (.0) ±.030 TWO PLACE (.00) ±.015 THREE PLACE (.000) ±.005 ANGLES ± WEIGHT	
DIFFERENTIAL TRAVEL — — .002-.010	L163 3A 125, <u>250</u> , 277 VAC 1/10HP <u>250</u> VAC 		
OVERTRAVEL — — — — .050 MIN			
RELEASE TRAVEL — — — — .010 MIN			
FREE POSITION — — — — .625 MAX			