

MICRO SWITCH
A DIVISION OF HONEYWELL INTERNATIONAL RELEASE (FORMER)
FED. MFR. CODE 91929

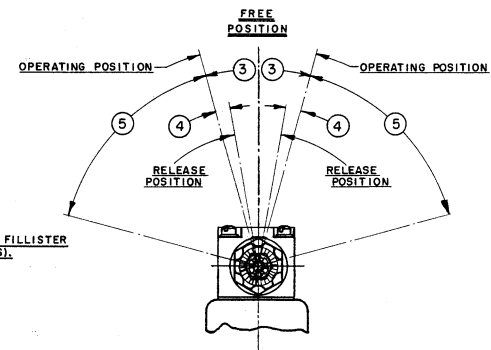
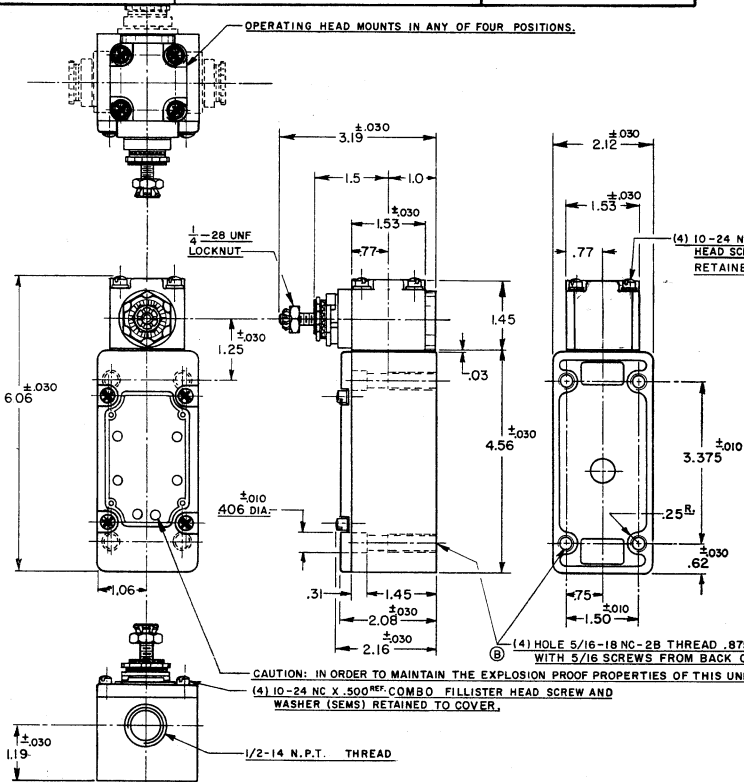
SWITCH-ENCLOSED

CATALOG LISTING
51ML2-E1

THIS DRAWING COVERS A PROPRIETARY ITEM AND IS THE PROPERTY OF MICRO SWITCH, A DIVISION OF HONEYWELL. THIS DRAWING IS NOT TO BE COPIED OR USED WITHOUT THE APPROVAL OF MICRO SWITCH.



51ML2-E1
 DRAWING NUMBER
 ISSUE
 REVISIONS
 A CO10928
 B NOV 58
 C CO12789
 D CO13487
 E CO14575
 F CO15284
 G CO16367
 H CO17428
 I CO18510
 J CO19639
 K CO20787
 L CO21925



NOTES

- IT IS ESSENTIAL THAT THE CONDUIT OPENING BE PROPERLY SEALED IN ORDER TO MAINTAIN THE EXPLOSION PROOF PROPERTIES SWITCH IS ASSEMBLED FOR ACTUATION IN EITHER DIRECTION
- LISTED BY UNDERWRITERS LABORATORY, INC. FOR USE IN GLASS I, GROUPS C AND D VAPOR-AIR ATMOSPHERE, AND CLASS 2 GROUPS E, F AND G DUST-AIR ATMOSPHERES
- TO CONVERT SWITCH FOR ACTUATION IN EITHER CLOCKWISE OR COUNTER-CLOCKWISE DIRECTION ONLY, REMOVE THE HEAD AND SLIDE THE CAM TOWARD THE REAR OF THE HEAD SUFFICIENTLY TO DISENGAGE FROM THE FLATS ON THE SHAFT. ROTATE THE CAM 90° IN THE OPPOSITE DIRECTION OF THE ACTUATION DESIRED AND RE-ENGAGE THE CAM WITH THE FLATS ON THE SHAFT
- SHAFT MAY BE ADJUSTED TO ACTUATE THE SWITCH IN THE CLOCKWISE DIRECTION ONLY, THE COUNTER-CLOCKWISE DIRECTION OR IN BOTH DIRECTIONS

CHARACTERISTICS	
OPERATING TORQUE	— 3 9/16 LB.-IN. MAX.
FULL OVERTRAVEL TORQUE	— 5 3/8 LB.-IN. MAX.
RELEASE TORQUE	— 7/16 LB.-IN. MIN.
PRETRAVEL	— ③ 12° MAX.
DIFFERENTIAL TRAVEL	— ④ 4° MAX.
OVERTRAVEL	— ⑤ 60° MIN.
SWITCH-BASIC REPLACEMENT	— IMKI

ELECTRICAL DATA	
CONTACT ARRANGEMENT	S. P. D. T.
20A-120, 240 OR 480 VAC; 3/4 H.P.-120 VAC 1/2 HP-240 VAC; 1/2A-115 VDC; 1/4A-230 VDC PILOT DUTY 120VA-HEAVY DUTY 600 VAC MAX	

SCALE 1/2 TO 1	
DO NOT SCALE PRINT	
UNLESS OTHERWISE SPECIFIED	
DIMENSIONS ARE IN INCHES	
TOLERANCES ARE:	
ONE PLACE (.03)	±.030
TWO PLACE (.001)	±.018
THREE PLACE (.000)	±.008
ANGLES	2
WEIGHT	