

**MTG-GL-172**

REVISONS

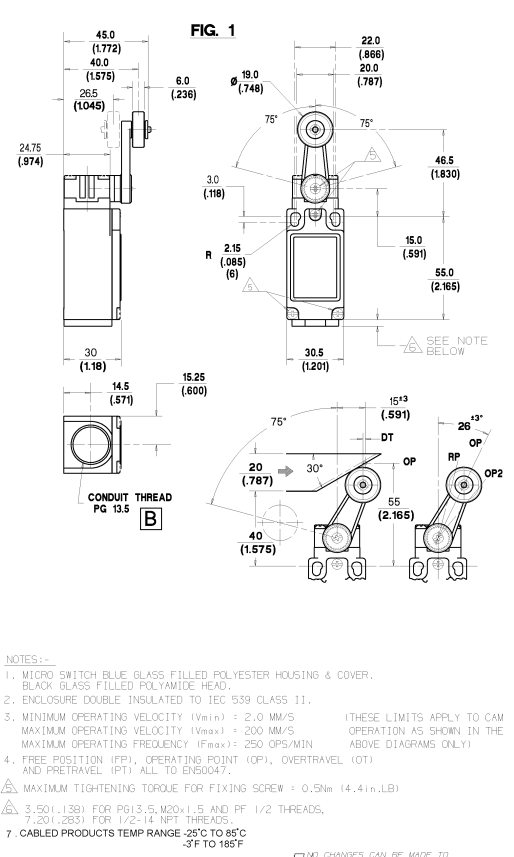
1	16	REPLACE
2	16	RELEASE NUMBER
3	16	AOID-25

REVISONS

1	16	000754
2	16	000754
3	16	000754
4	16	000754
5	16	000754
6	16	000754
7	16	000754
8	16	000754
9	16	000754
10	16	000754
11	16	000754
12	16	000754
13	16	000754
14	16	000754
15	16	000754
16	16	000754

**Homeywell**      **LIMIT SWITCH**      CATALOGUE LISTING

**GLS**      **MTG-GL-172**

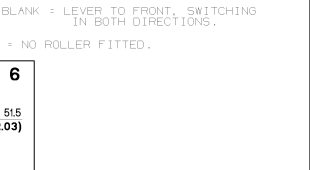
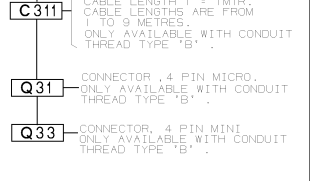
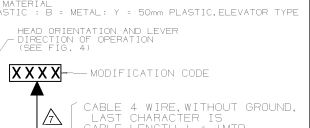
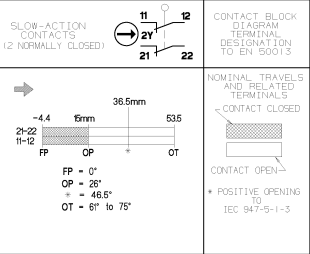
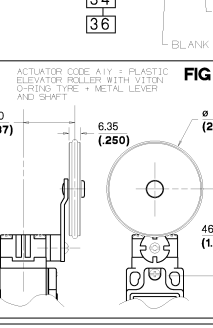
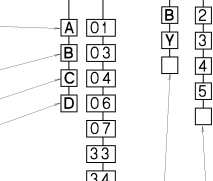
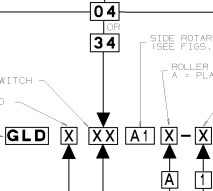
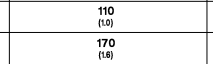
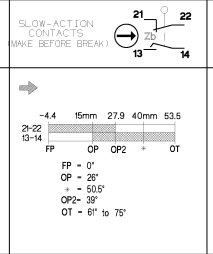
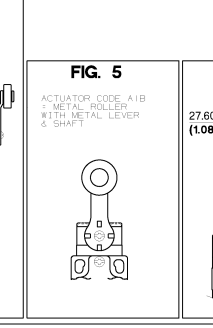
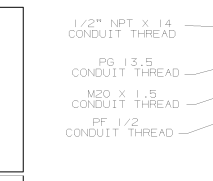
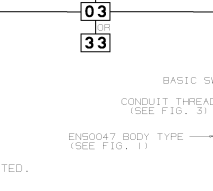
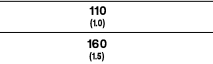
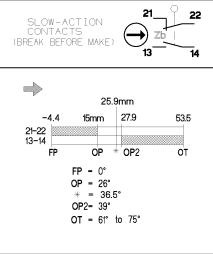
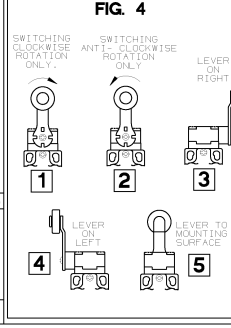
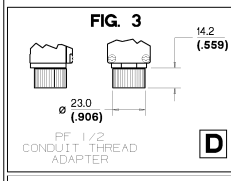
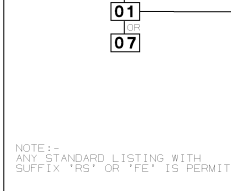
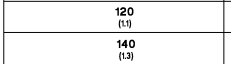
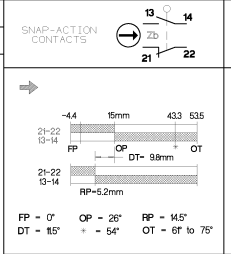


**NOTES:-**

- MICRO SWITCH BLUE GLASS FILLED POLYESTER HOUSING & COVER, BLACK GLASS FILLED POLYAMIDE HEAD.
- ENCLOSURE DOUBLE INSULATED TO IEC 539 CLASS 11.
- MINIMUM OPERATING VELOCITY (V<sub>min</sub>) = 2.0 MM/S (THESE LIMITS APPLY TO CAM MAXIMUM OPERATING VELOCITY (V<sub>max</sub>) = 200 MM/S OPERATION AS SHOWN IN THE ABOVE DIAGRAMS ONLY)
- FREE POSITION (FP), OPERATING POINT (OP), OVERTRAVEL (OT) AND PRETRAVEL (PT) ALL TO EN50047.
- MAXIMUM TIGHTENING TORQUE FOR FIXING SCREW = 0.5Nm (4.41in.lbs)
- 3.591 (1.331) FOR PG 13.5, M20x1.5 AND PF 1/2 THREADS, 7.201 (.283) FOR 1/2-1/4 NPT THREADS.
- CABLED PRODUCTS TEMP RANGE -25°C TO 85°C -31°F TO 185°F

CHANGES CAN BE MADE TO THIS DRAWING WITHOUT JOINT MANUFACTURER'S PREVIOUS APPROVAL

IEC 947-5-1 ELECTRICAL RATINGS				ENVIRONMENTAL		APPROVALS
SILVER CONTACTS		GOLD RELATED CONTACTS		ENVIRONMENTAL		APPROVALS
AC	DC	AC	DC	IP66	NEMA 1, 2, 13	   IEC 947-5-1 EN50047
10A @ 250V	10A @ 125V	10A @ 250V	10A @ 125V	TEMP RANGE: -40°C TO 85°C	TEMP RANGE: -40°F TO 185°F	
5A @ 250V	5A @ 125V	5A @ 250V	5A @ 125V	STORAGE: -40°C TO 85°C	STORAGE: -40°F TO 185°F	



NOTE FOR CONNECTION DIAGRAMS AND ADDITIONAL ELECTRICAL, ENVIRONMENTAL & DIMENSIONAL INFORMATION SEE DRAWING GL-4902.