



1LS1-L



Actual product appearance may vary.

Enclosed Switches Series LS: Side Rotary with 1.5" Fixed Length Lever; Steel Roller; 1NC 1NO DPDT Snap Action, Double Break; 0.5 in - 14NPT conduit; Compact/Non-Plug-in

Features

- Mode of operation is field adjustable
- NEMA 1, 3, 4, 6, and 13
- Wide choice of heads and actuators
- Variety of operating characteristics
- Captive screws
- UL and CSA approved parts available

Potential Applications

- Machine tools
- Conveyors
- Material handling
- Metal fabrication equipment
- Lift trucks

Description

MICRO SWITCH™ compact LS and plug-in 200LS limit switches have a long record of successful performance in industrial applications. The MICRO SWITCH™ LS fits in many places too small for any other fully adjustable limit switch. The MICRO SWITCH™ 200LS switches are the original plug-in concept for reducing downtime by making changeover simple and fast.

Product Specifications	
Availability	Global
Operating Force (O.F.)	0.51 N m max. [4.5 in lb max.]
Full Overtravel Force	8.13 N m max. [6 in lb max.]
Release Force (R.F.)	0.08 N m min. [0.75 in lb min.]
Pretravel (P.T.)	20° max.
Overtravel (O.T.)	30° min.
Differential Travel (D.T.)	12° max.
Product Type	MICRO SWITCH™ Compact Limit Switches
Actuator	Side Rotary
Lever Style	1.5 in Fixed Length Lever with front mounted Steel Roller (.75 in dia. x .25 in wide)

Circuitry	1NC 1NO SPDT Snap Action, Double-Break
Ampere Rating	10 A Ind./0.8 A Res./0.4 Res.
Supply Voltage	125 Vac. 250 Vac. 480 Vac/125 Vdc/250 Vdc
Housing Material	Zinc Die-Cast
Termination Type	0.5 in - 14NPT conduit
Housing Type	Compact / Non Plug-In
Series Name	LS
Sealing	NEMA 1, 3, 4, 6, 13
Approvals	UL Recognized, CSA Certified
CSA File #	LR57325
UL File #	E12252
Operating Temperature Range	-29 °C to 71 °C [-20 °F to 160 °F]
Comment	UL Recognized, CSA Certified
UNSPSC Code	302119
UNSPSC Commodity	302119 Switches and controls and relays
Sealed	Industrial

CATALOG LISTING 1LS1-L
 ISSUE 18
 M
 PAGE 1 OF 1
 RELEASE NO.

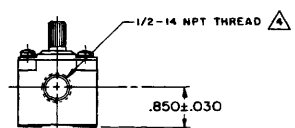
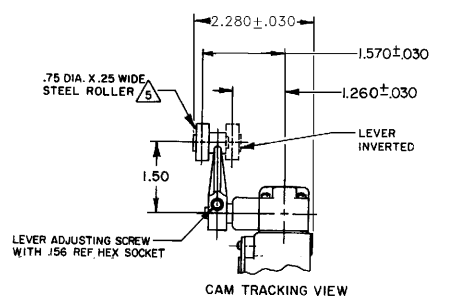
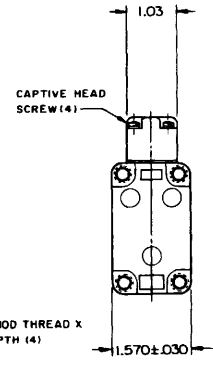
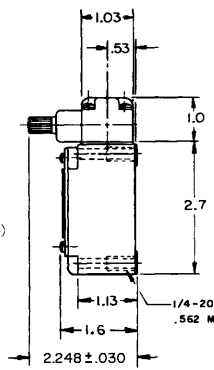
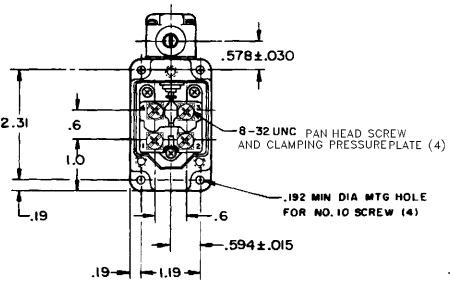
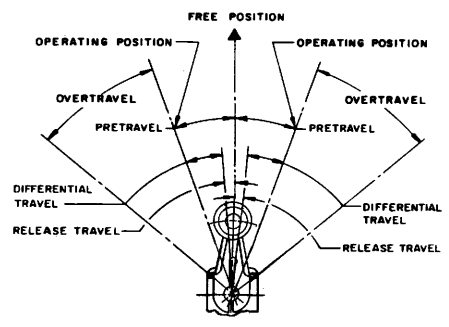
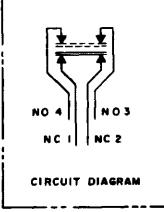
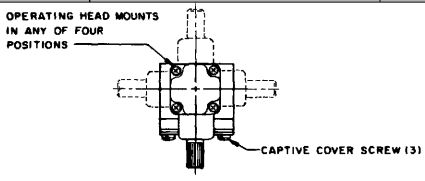
REVISIONS
 A 20 MAR 97
 B 28 MAR 95
 C 20078
 5 APR 00

FORMTEK
 DRAWN GJW
 28 MAR 95
 CHECK JAF
 5 MAY 95
 CHECK

MICRO SWITCH
 a Honeywell Division

SWITCH-ENCLOSED

CATALOG LISTING
 1LS1-L



THIS DRAWING COVERS A PROPRIETARY ITEM AND IS THE PROPERTY OF MICRO SWITCH, A DIVISION OF HONEYWELL. THIS DRAWING IS NOT TO BE COPIED OR USED WITHOUT THE APPROVAL OF MICRO SWITCH.		THIRD ANGLE PROJECTION
CHARACTERISTICS		SCALE 1/2 TO 1
OPERATING TORQUE	4.5 IN-LB	DO NOT SCALE PRINT
FULL OVERTRAVEL TORQUE	6 IN-LB	UNLESS OTHERWISE SPECIFIED TOLERANCES ARE
RELEASE TORQUE	75 IN-LB	ONE PLACE (.01) ± .030
PRETRAVEL	20° MAX	TWO PLACE (.00) ± .015
DIFFERENTIAL TRAVEL	12° MAX	THREE PLACE (.000) ± .005
OVERTRAVEL	30° MIN	ANGLES ±
RELEASE TRAVEL	5° MIN	WEIGHT
SWITCH-BASIC REPLACEMENT	2MW1-L	
ELECTRICAL DATA		
CONTACT ARRANGEMENT (SEE CIRCUIT DIAGRAM)		
L126 10A 125, 250 OR 480 VAC		
1/3HP 125 VAC, 3/4HP 250 VAC		
0.8A 125 VDC, 0.4A 250 VDC		

- NOTES
 1-SWITCH IS ASSEMBLED FOR ACTUATION IN BOTH DIRECTIONS BUT MAY BE ADJUSTED TO ACTUATE IN EITHER THE CLOCKWISE DIRECTION ONLY OR THE COUNTERCLOCKWISE DIRECTION ONLY
 2-TO CONVERT SWITCH FOR ACTUATION IN EITHER THE CLOCKWISE OR COUNTERCLOCKWISE DIRECTION ONLY, REMOVE ACTUATOR HEAD AND ROTATE THE NOTCHED PLUNGER 90° TO THE RIGHT FOR CLOCKWISE ACTUATION OR 90° TO THE LEFT FOR COUNTERCLOCKWISE ACTUATION
 ⚠ SEAL TO BE FURNISHED BY USER
 ⚠ ROLLER LEVER MAY BE LOCKED IN ANY POSITION THRU 360°
 6-LEVER FURNISHED UNASSEMBLED IN UNIT PACKING BOX

