

# MICRO SWITCH

FREEPORT ILLINOIS, U.S.A  
A DIVISION OF HONEYWELL  
FED. MFG. CODE 91929

# SWITCH-BASIC

CATALOG LISTING

YA-2RV196-D63

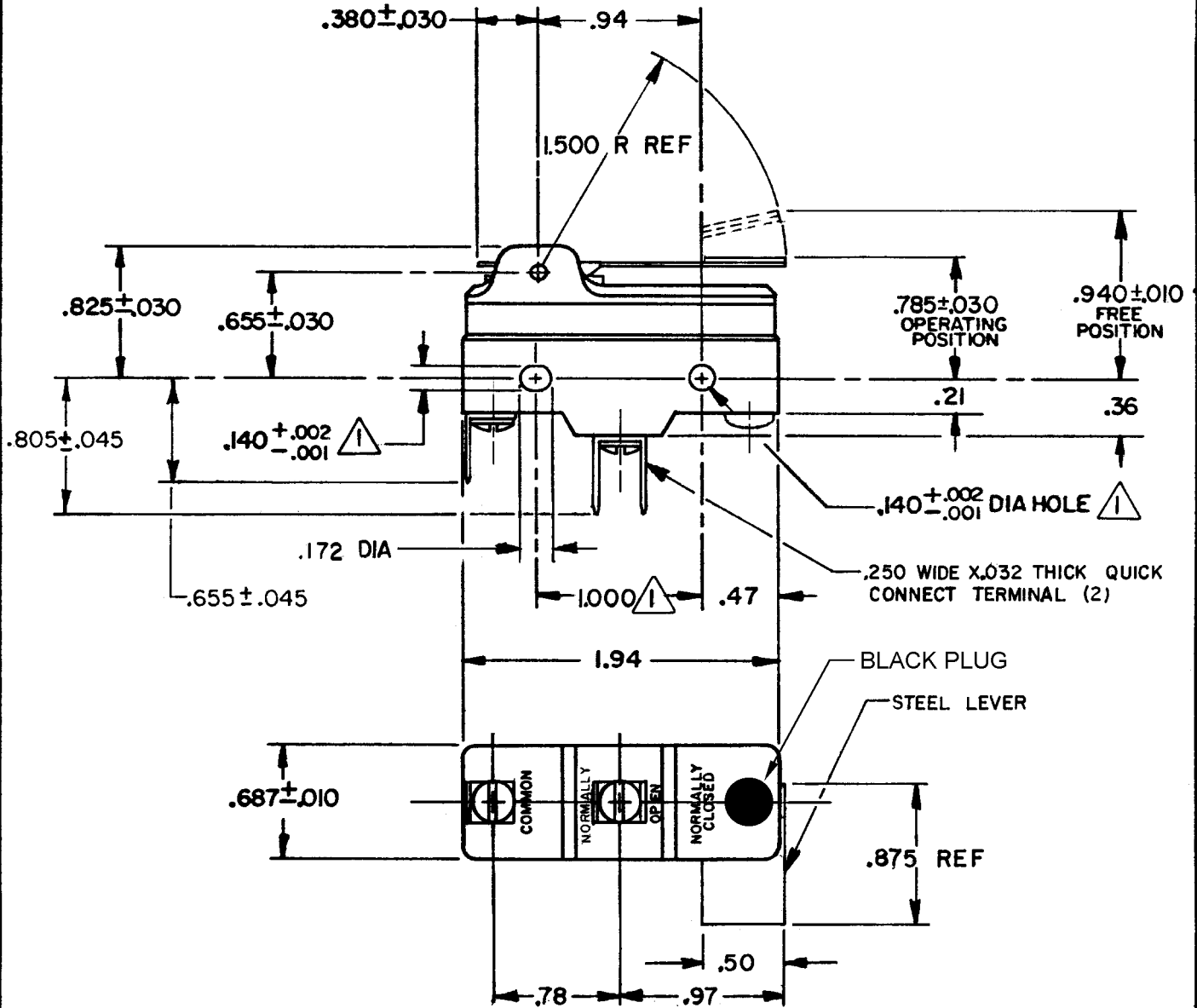
ADQ7975

CATALOG LISTING  
**YA-2RV196-D63**  
PAGE 1 OF 1

**M**  
DRAWING NUMBER  
**6**  
ISSUE

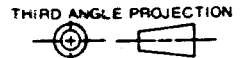
REVISIONS	
A	CO-77588 KDR 29 MAR 94
B	CO-80938 DLT 9 JUN 95
C	C093346 DLT 27 AUG 98
D	0000763 CSL 2 JUL 03
E	0018388 TGP 17 FEB 06

RELEASE NO. PR-10901  
CHECK  
17 FEB 06  
RJ  
CHECK  
4 FEB 02  
CHECK  
26 JAN 82  
CHECK  
FO-52848-A  
DRAWN  
RASTER



- NOTES**  
 ① MOUNTING HOLES WILL ACCEPT PINS OR SCREWS OF .139 MAX DIA ON 1.000±.002 CENTERS  
 ② FREE POSITION MEASURED WITH SWITCH INVERTED

THIS DRAWING COVERS A PROPRIETARY ITEM AND IS THE PROPERTY OF MICRO SWITCH, A DIVISION OF HONEYWELL. THIS DRAWING IS NOT TO BE COPIED OR USED WITHOUT THE APPROVAL OF MICRO SWITCH.



CHARACTERISTICS
OPERATING FORCE --- 3 OZ MAX
RELEASE FORCE --- 1/2 OZ MIN
DIFFERENTIAL TRAVEL --- .075 MAX
OVERTRAVEL --- .090 MIN

ELECTRICAL DATA
CONTACT ARRANGEMENT S P N O
20A-125, 250 OR 480 VAC; 10A-125 VAC "L" 1HP-125 VAC; 2HP-250 VAC CODE L23 1/2A-125 VDC; 1/4A-250 VDC
L288 L308 L315
20(3)A 250V ~ T85 5E4

SCALE FULL			
DO NOT SCALE PRINT			
TOLERANCES			
APPLY TO DESIGN UNITS. CONVERSIONS ARE ONLY FOR REFERENCE. UNLESS NOTED TOLERANCES ARE ±			
Dim.	TOL.	Dim.	TOL.
in	mm/16	in	mm/16
NO PLACES	X	1, 2, 3	0.01/03
ONE PLACE	X.X	4, 5, 6	0.39/015
TWO PLACES	X.XX	7, 8, 9	0.13/005
THREE PLACES	X.XXX	10	0.13/005
ANGLES			
DESIGN UNITS <input type="checkbox"/> SI METRIC		US CUSTOMARY <input checked="" type="checkbox"/>	
WEIGHT			