

MICRO SWITCH
a Honeywell Division

FED. MFG. CODE 91929

SWITCH-BASIC

CATALOG LISTING

V7-5A17E9-000-1

CW-C4080

CATALOG LISTING
V7-5A17E9-000-1

PAGE 1 OF 1

REPLACES

RELEASE NO. PR-18947

ISSUE
M
4

CHECK

CHECK

REVISIONS

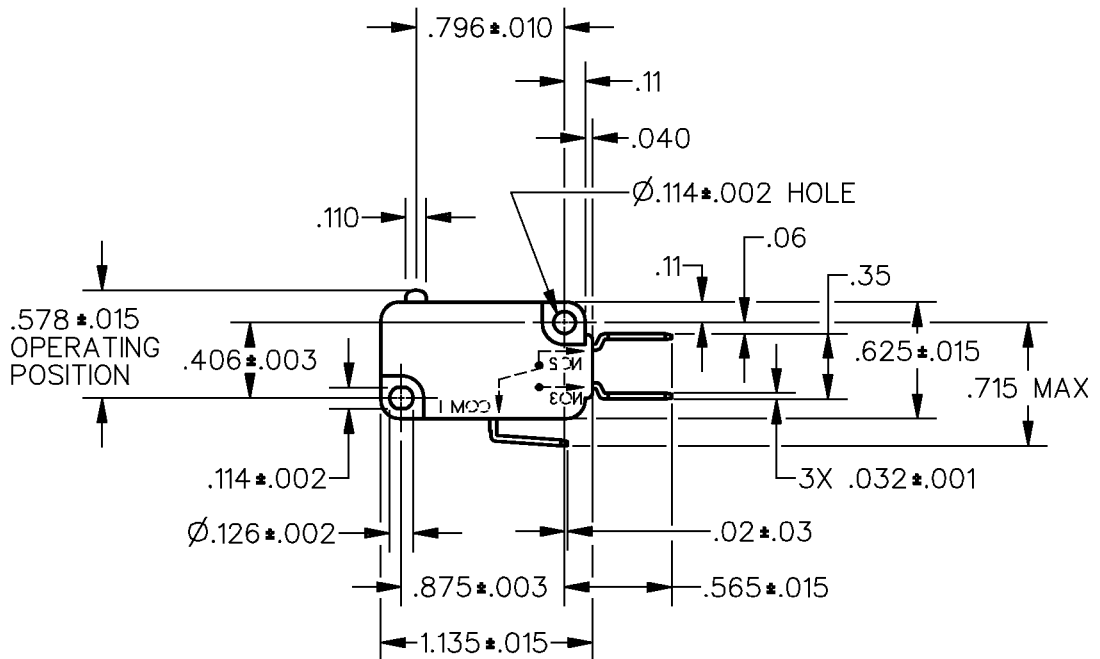
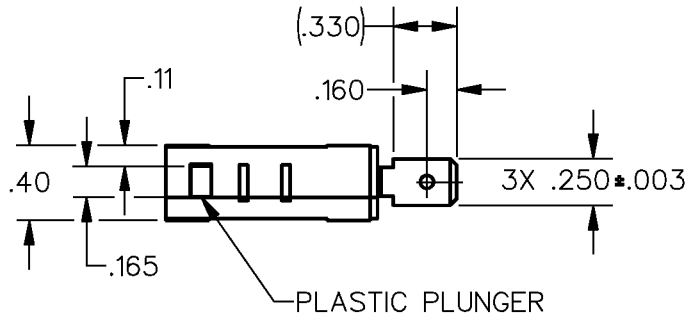
A	DBS DWG C082209	CSL 11 NOV 96
B	RE-INST PR23421	TSM 10 JUN 98
C	CO- 93028	TSM 7 JAN 98

CHECK

B A B 20 FEB 91

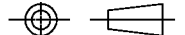
FORMTEK

DRAWN



THIS DRAWING COVERS A PROPRIETARY ITEM AND IS THE PROPERTY OF MICRO SWITCH, A DIVISION OF HONEYWELL. THIS DRAWING IS NOT TO BE COPIED OR USED WITHOUT THE APPROVAL OF MICRO SWITCH.

THIRD ANGLE PROJECTION



CHARACTERISTICS	ELECTRICAL DATA	SCALE FULL	DO NOT SCALE PRINT
OPERATING FORCE — — — 12 GRAMS MAX	CONTACT ARRANGEMENT S P D T	UNLESS OTHERWISE SPECIFIED TOLERANCES ARE	
DIFFERENTIAL TRAVEL — — — .002—.007	L162 5A 125, 250, 277 VAC 1/10HP 250 VAC	ONE PLACE (.0) ±.030	
		TWO PLACE (.00) ±.015	
		THREE PLACE (.000) ±.005	
		ANGLES ±	
		WEIGHT	

