

MICRO SWITCH
a Honeywell Division

FED. MFG. CODE 91929

SWITCH - BASIC

CATALOG LISTING
V3L-1084

CQ-L9933

REPLACES X89865-V3L

RELEASE NO. PR-16900

CATALOG LISTING

V3L-1084

M

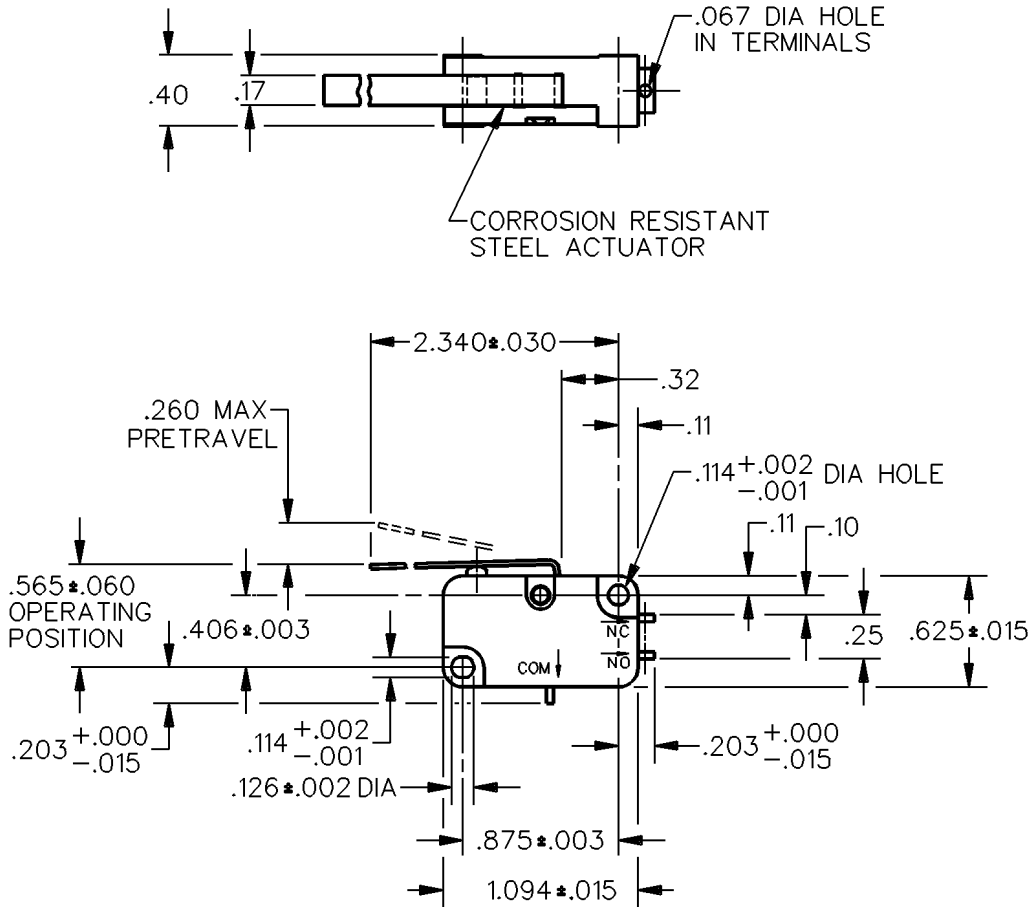
ISSUE
2

CHECK

CHECK

REVISIONS

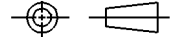
A	CO	76446
	DCS	1 FEB 94



NOTE
1 - TERMINALS ARE PLATED FOR SOLDERING

THIS DRAWING COVERS A PROPRIETARY ITEM AND IS THE PROPERTY OF MICRO SWITCH, A DIVISION OF HONEYWELL. THIS DRAWING IS NOT TO BE COPIED OR USED WITHOUT THE APPROVAL OF MICRO SWITCH.

THIRD ANGLE PROJECTION



CHARACTERISTICS

OPERATING FORCE	— — — 4 OZ MAX
RELEASE FORCE	— — — 1/2 OZ MIN
DIFFERENTIAL TRAVEL	— — — .090 MAX
OVERTRAVEL	— — — .150 MIN
RELEASE TRAVEL	— — — .021 MIN

ELECTRICAL DATA

CONTACT ARRANGEMENT	S P D T
	L83
	15.1A 1/2HP 125 OR 250 VAC
	1/2A 125 VDC, 1/4A 250 VDC
	5A 125 VAC "L"

SCALE FULL

DO NOT SCALE PRINT

UNLESS OTHERWISE SPECIFIED TOLERANCES ARE		
ONE PLACE	(.0)	±.030
TWO PLACE	(.00)	±.015
THREE PLACE	(.000)	±.005
ANGLES		±



WEIGHT

DDM/CAD

DRAWN

G R T 15 NOV 88 CHECK