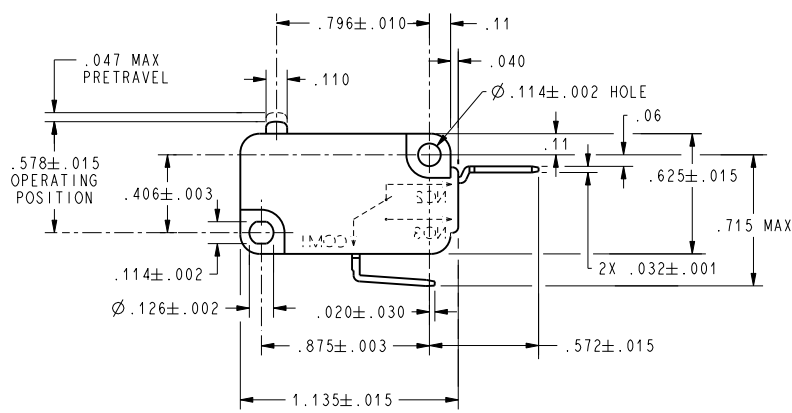
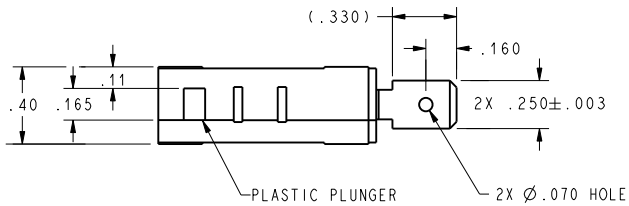


CW-C5037
 SUPERCEDES
X114953-V7

REV	DOCUMENT	CHANGED BY	CHECK
A	0002442	CSL	5DEC03



CHARACTERISTICS	
OPERATING FORCE	----- 15 GRAMS MAX
DIFFERENTIAL FORCE	-- 5.2 GRAMS MAX
RELEASE TRAVEL	----- .010 MIN
DIFFERENTIAL TRAVEL	----- .006 MAX
OVERTRAVEL	----- .050 MIN
FREE POSITION	----- .625 MAX

ELECTRICAL DATA	
CONTACT ARRANGEMENT S P N C	
L163 3A 125, 250, 277 VAC 1/10HP 250 VAC	

UNLESS OTHERWISE SPECIFIED TOLERANCES ARE:			
	<input checked="" type="checkbox"/> US (inch)	<input type="checkbox"/> CUSTOMARY	<input type="checkbox"/> SI (mm)
NO PLACE	X	±.040	±1
ONE PLACE	.X	±.030	±0,4
TWO PLACE	.XX	±.015	±0,15
THREE PLACE	.XXX	±.005	±
ANGLES		±	±
RAW MATERIAL-COMMERCIAL STANDARD			

DRAWN	CSL	5DEC03
CHECK	CSL	5DEC03
THIS DRAWING COVERS A PROPRIETARY ITEM AND IS THE PROPERTY OF HONEYWELL. THIS DRAWING IS NOT TO BE COPIED OR USED WITHOUT THE PERMISSION OF HONEYWELL.		
DIMENSIONS ARE TO BE MET BEFORE PROTECTIVE COATINGS ARE APPLIED		
PTC 2D	ASME Y14.5M-1994	

Honeywell			
TITLE SWITCH, BASIC			
SIZE	DWG TYPE	DRAWING NAME	REV
B	I	V7-5F37E9-000-1	A
SCALE	2:1	WEIGHT	SHEET 1 OF 1