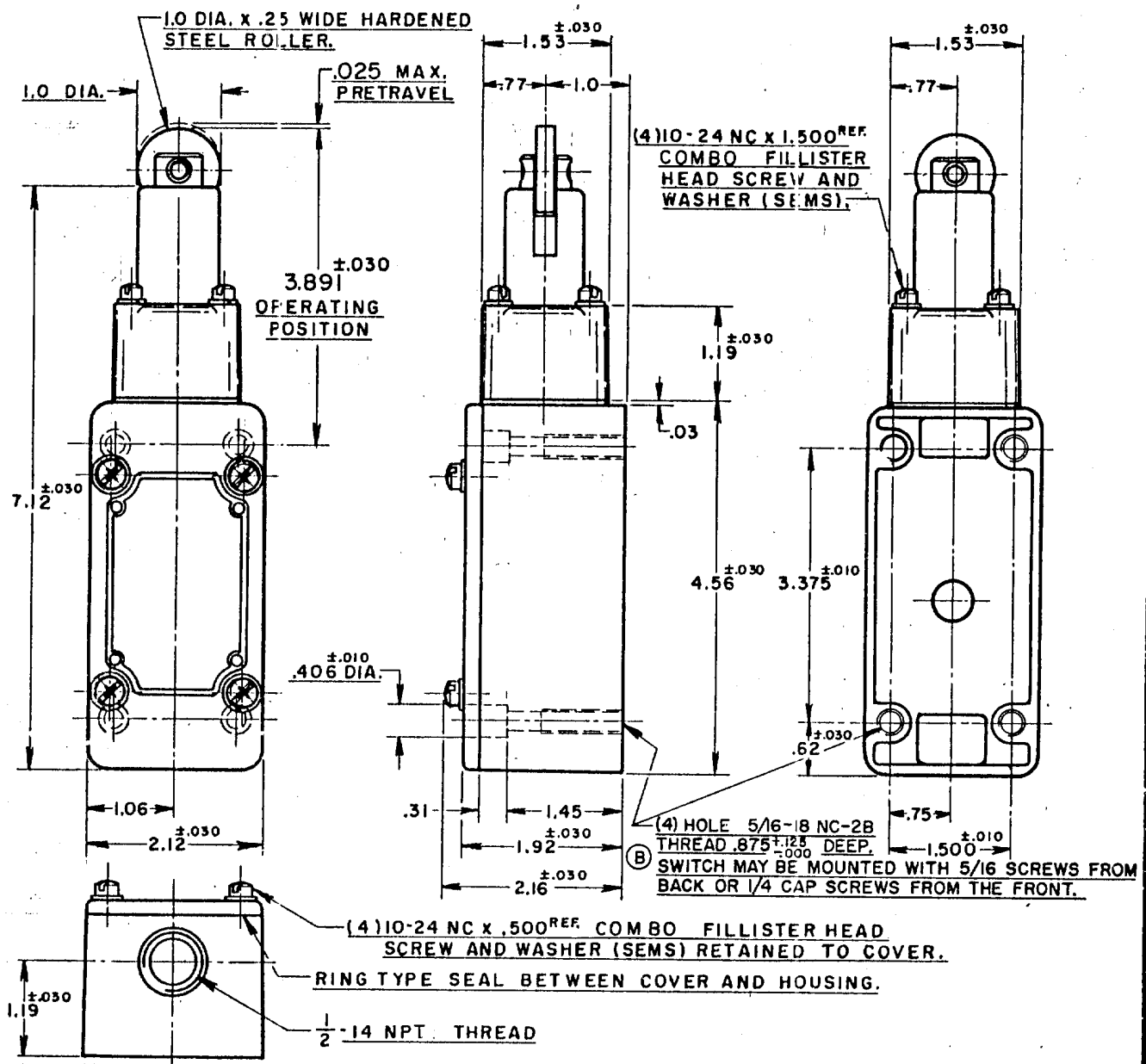


(M) 5ML1
 ISSUE 6
 REPLACES
 RELEASE NO.
 C.N.T. 19067.56
 CHECK
 J.W.M. 13 OCT. 56
 CHECK
 G.C.H. 24 OCT. 56
 CHECK
 R.L.Z. 12 OCT. 56
 DRAWN

MICRO SWITCH
 A DIVISION OF MINNEAPOLIS-HONEYWELL REGULATOR COMPANY
 FREEPORT, ILLINOIS
 FED. MFR. CODE 91929

SWITCH - ENCLOSED

5ML1 S



NOTE-

1. ROLLER ASSEMBLY MAY BE RE-ASSEMBLED 90° FROM POSITION SHOWN.
2. IT IS ESSENTIAL TO PREVENT ENTRANCE OF HARMFUL AGENTS THRU THRU THE CONDUIT OPENING TO OBTAIN THE FULL BENEFIT OF THE SEALED CONSTRUCTION PROVIDED IN THIS UNIT
3. SWITCH WILL PERFORM SATISFACTORILY IN TEMPERATURES TO MINUS 30° F.

THIS DRAWING COVERS A PROPRIETARY ITEM AND IS THE PROPERTY OF MICRO SWITCH, A DIVISION OF HONEYWELL. THIS DRAWING IS NOT TO BE COPIED OR USED WITHOUT THE APPROVAL OF MICRO SWITCH.

CHARACTERISTICS (TENTATIVE)	ELECTRICAL DATA		SCALE 1/2 TO 1	
OPERATING FORCE ——— 6 LBS. APPROX.	CONTACT ARRANGEMENT S. P. D. T.	BREAK CAPACITY	DO NOT SCALE PRINT	
RELEASE FORCE ——— 4 LBS. APPROX.	20 A-120, 240, 480 OR 600 VAC; 3/4 HP-120VAC, 1/2 H.P.-240 VAC; 1/2 A-115 VDC; 1/4 A-230 VDC PILOT DUTY RATING: 600 VAC MAX.		UNLESS OTHERWISE SPECIFIED	
DIFFERENTIAL TRAVEL ——— .005 MAX.			DIMENSIONS ARE IN INCHES	
OVERTRAVEL ——— .500 MIN.			TOLERANCES ARE:	
SWITCH-BASIC REPLACEMENT ——— 1MK1	©	SP	ONE PLACE (.0) ±.050 TWO PLACE (.00) ±.018 THREE PLACE (.000) ±.008 ANGLES ±	
		UL	WEIGHT	