

MICRO SWITCH
a Honeywell Division

FED. MFG. CODE 91929

SWITCH - BASIC

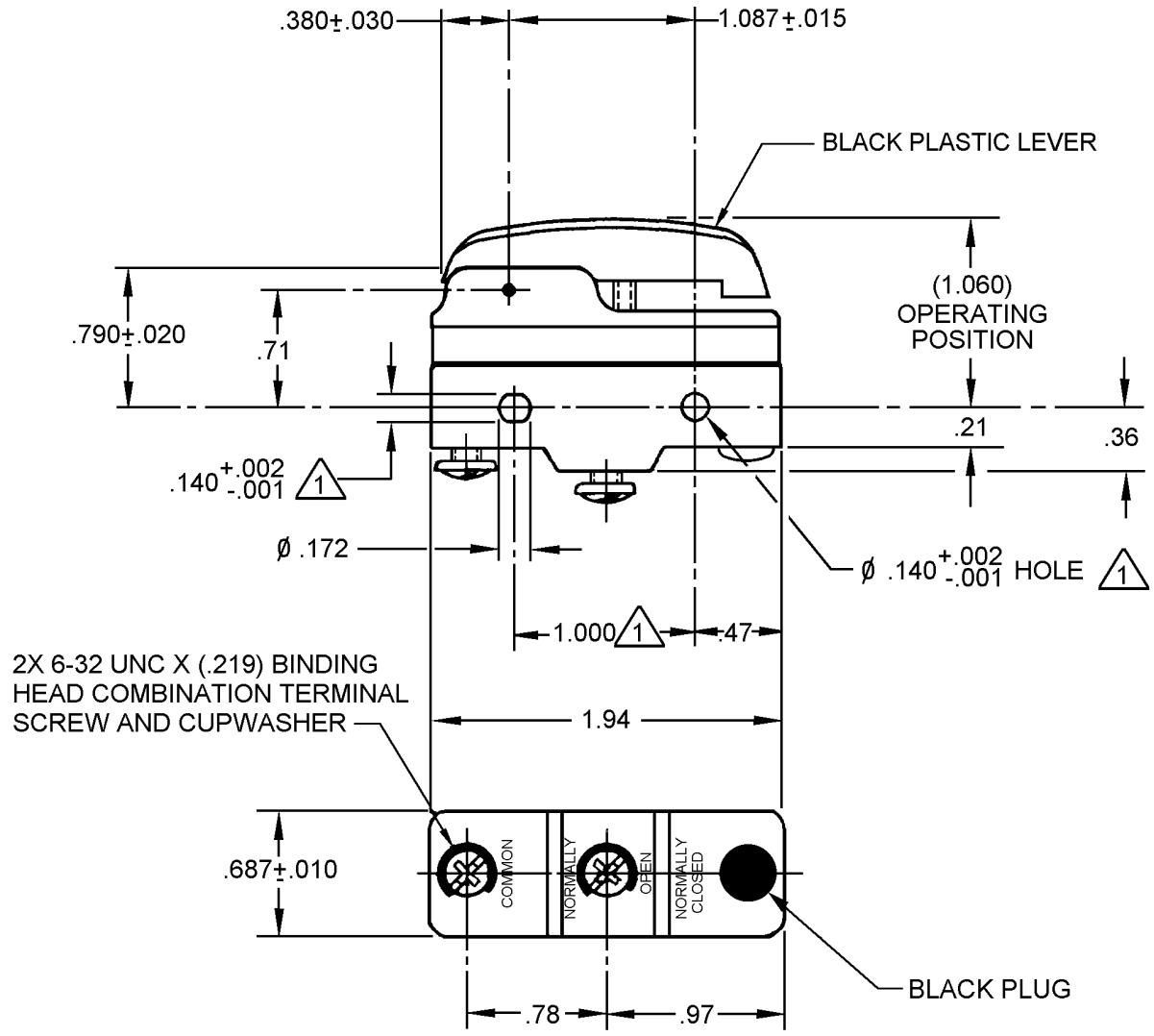
CATALOG LISTING

YZ-2RW84328-A2

AYL0500

CATALOG LISTING
YZ-2RW84328-A2
PAGE 1 OF 1
REPLACES
RELEASE NO. SR-11650
CHECK
09JAN06
CHECK
30 MAY 02
CHECK
30 MAY 02
DRAWN
G J W
30 MAY 02

ISSUE
M
9

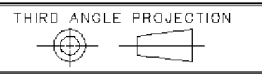


2X 6-32 UNC X (.219) BINDING HEAD COMBINATION TERMINAL SCREW AND CUPWASHER

NOTE
MOUNTING HOLES WILL ACCEPT PINS OR SCREWS OF $\phi .139$ MAX ON $1.000 \pm .002$ CENTERS

ANSI Y14.5M-1982 APPLIES

THIS DRAWING COVERS A PROPRIETARY ITEM AND IS THE PROPERTY OF MICRO SWITCH, A DIVISION OF HONEYWELL. THIS DRAWING IS NOT TO BE COPIED OR USED WITHOUT THE APPROVAL OF MICRO SWITCH.



CHARACTERISTICS

ELECTRICAL DATA

SCALE FULL DO NOT SCALE PRINT

L96
L288
L306
L315

CONTACT ARRANGEMENT
S P N O

15A 125, 250 OR 480 VAC
1/8HP 125 VAC, 1/4HP 250 VAC
1/2A 125 VDC, 1/4A 250 VDC

CE EN05 RU

16A 250V T85 5E4

UNLESS OTHERWISE SPECIFIED TOLERANCES ARE

ONE PLACE (.0) ±.030
TWO PLACE (.00) ±.015
THREE PLACE (.000) ±.005
ANGLES ±
WEIGHT