

MICRO SWITCH
a Honeywell Division

SWITCH - ENCLOSED

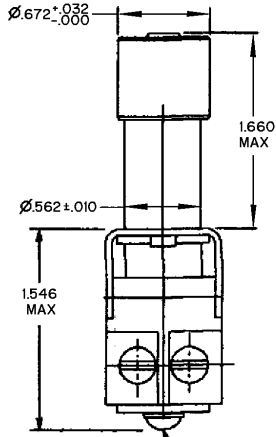
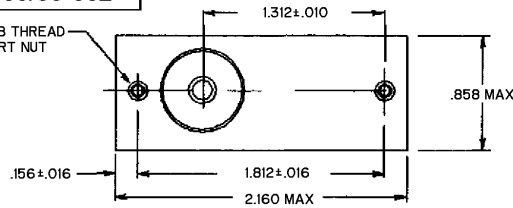
CATALOG LISTING

JS-552

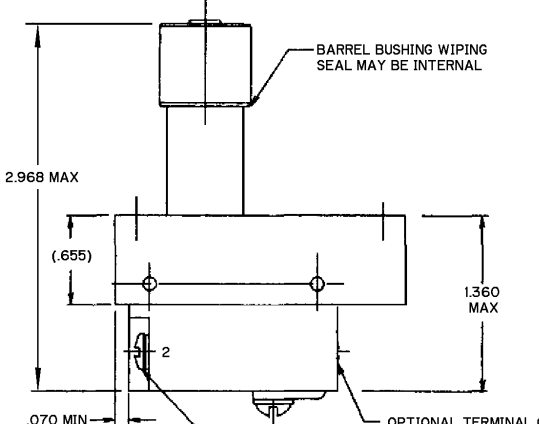
M8805/55-002

FED. WFS. CODE 91929

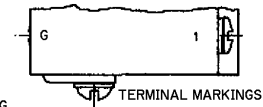
2X Ø138-40 UNF-2B THREAD
SELF LOCKING INSERT NUT



TERMINAL G
Ø138-32 UNC-2A
(*6-32 UNC-2A) .250 LONG
ROUND HEAD SCREW MS35338-98
LOCKWASHER OR EQUIVALENT



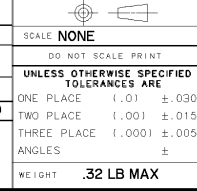
3X Ø125-40 UNC-2A
(*5-40 UNC-2A) .250
LONG BINDING HEAD
SCREW (1 ADDITIONAL
G TERMINAL OPTIONAL)



THIS DRAWING COVERS A PROPRIETARY ITEM AND IS THE PROPERTY OF MICRO SWITCH, A DIVISION OF HONEYWELL. THIS DRAWING IS NOT TO BE COPIED OR USED WITHOUT THE APPROVAL OF MICRO SWITCH

CHARACTERISTICS	ELECTRICAL DATA
ACTUATING FORCE ----- 7 - 11 LBS	CONTACT ARRANGEMENT D P S T - N O
FULL OVERTRAVEL FORCE----- 20 LBS MAX	28 VDC
RELEASE FORCE----- 5 LB MIN	RATED LOAD OVERLOAD
PRETRAVEL----- .090 MIN	INDUCTIVE .75 1.75
DIFFERENTIAL TRAVEL----- .050 MIN	
OVERTRAVEL----- .050 MIN	
TOTAL TRAVEL----- .165 MIN	

THIRD ANGLE PROJECTION
SCALE NONE
DO NOT SCALE PRINT
UNLESS OTHERWISE SPECIFIED TOLERANCES ARE
ONE PLACE (1.0) ±.030
TWO PLACE (1.00) ±.015
THREE PLACE (1.000) ±.005
ANGLES ±
WEIGHT .32 LB MAX



- NOTES
- 1 - SWITCH SEALED PER MIL-PRF-8805, SYMBOL 1
 - 2 - TERMINAL HARDWARE PACKET FURNISHED UNASSEMBLED: 15PA308-JS INCLUDES BUSS BRACKET AND TERMINAL SCREWS
 - 3 - MICRO SWITCH, MANUFACTURER'S CAGE CODE, CATALOG LISTING, MILITARY PART NUMBER AND DATE CODE IDENTIFIED ON SIDE OF SWITCH
 - 4 - OPERATING TEMPERATURE RANGE: -40°C TO +85°C

ANSI Y14.5M-1982 APPLIES

RASTER
 DRAWN
 JJA 16 OCT 99
 CHECK SAV 6 OCT 99
 CHECK
 ISSUE 3
 M
 PAGE 1 OF 1
 PR-24110
 RELEASE NO
 JS-552
 CATALOG LISTING