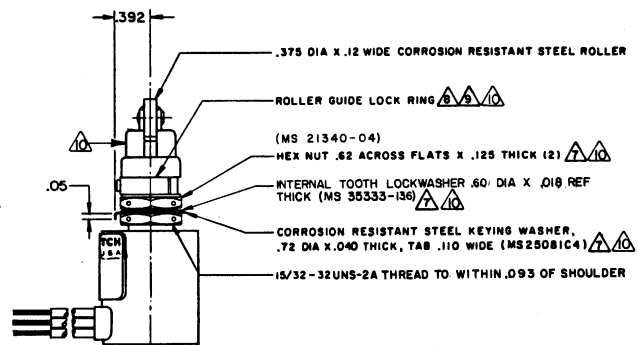
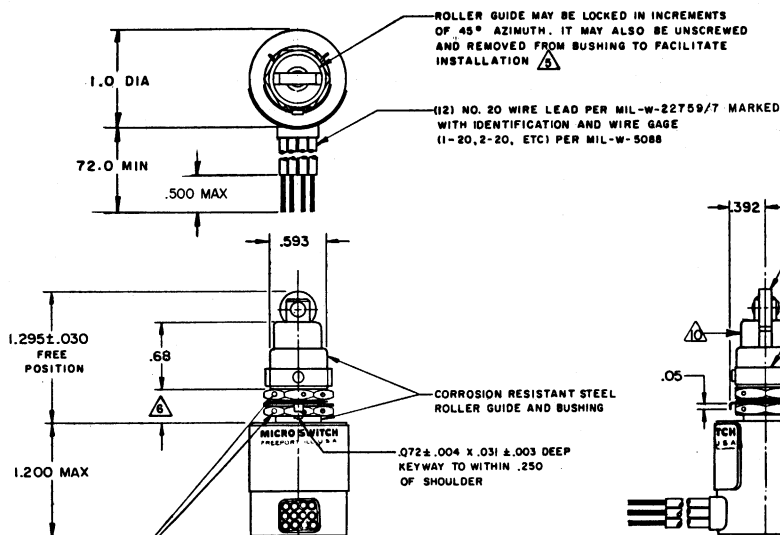
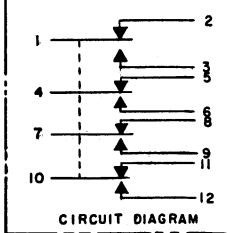


**MICRO SWITCH**  
 FREEPORT, ILLINOIS, U.S.A.  
 A DIVISION OF HONEYWELL  
 FED. MFG. CODE 91929

**SWITCH-ENCLOSED**

CATALOG LISTING  
**624EN222-6**  
 MILITARY STDS PART NO.  
 MS 27240-8



**ELECTRICAL RATINGS, GOLD CONTACTS**

LOAD	SEA LEVEL			50,000 FEET	
	POWER CIRCUIT 28 V DC	ELECTRONIC LOGIC 5 V DC	LOW LEVEL 30mV DC OR PEAK AC	POWER CIRCUIT 28 V DC	ELECTRONIC LOGIC 5 V DC
RES	(A) 1.0	(A) 0.01	0.01	(A) 1.0	(A) 0.01
IND	0.5	---	---	0.5	---

- NOTES**
- 1 - CORROSION RESISTANT STEEL ENCLOSURE
  - 2 - SWITCH SEALED PER MIL-S-8805 SYMBOL 4
  - 3 - CIRCUIT DIAGRAM, CATALOG LISTING, AND MILITARY STANDARDS PART NO. MS27240-8 ARE SHOWN ON NAMEPLATE
  - 4 - COINCIDENCE OF OPERATING AND RELEASING POINTS: .010 INCH OF PLUNGER TRAVEL
- TO ADJUST ROLLER DIRECTION REMOVE ROLLER GUIDE LOCK RING SCREW ROLLER GUIDE TO DESIRED DIRECTION, SECURE BY REPLACING ROLLER GUIDE LOCK RING
- ROLLER GUIDE LOCATION CAN VARY BETWEEN .292 AND .450 WHILE MAINTAINING .125 MIN OVERTRAVEL
- REPLACEMENT MOUNTING HARDWARE - PACKET 19PA9  
 REPLACEMENT ROLLER GUIDE AND LOCK RING - PACKET 15PA105  
 REPLACEMENT LOCK RING - PACKET 15PA107  
 HARDWARE MAY BE PACKAGED UNASSEMBLED PER MIL-S-8805

THIS DRAWING COVERS A PROPRIETARY ITEM AND IS THE PROPERTY OF MICRO SWITCH, A DIVISION OF HONEYWELL. THIS DRAWING IS NOT TO BE COPIED OR USED WITHOUT THE APPROVAL OF MICRO SWITCH.

SCALE **FULL**  
 DO NOT SCALE PRINT

**CHARACTERISTICS**

OPERATING FORCE	6-12 LB
FULL OVERTRAVEL FORCE	30 LB MAX
RELEASE FORCE	4 LB MIN
PRETRAVEL	.040 MAX
DIFFERENTIAL TRAVEL	.020 MAX
OVERTRAVEL	.125 MIN

**ELECTRICAL DATA**

CONTACT ARRANGEMENT  
 S. P. D. T. (4)

UNLESS OTHERWISE SPECIFIED TOLERANCES ARE

ONE PLACE (.0)	±.030
TWO PLACE (.00)	±.015
THREE PLACE (.000)	±.005
ANGLES	±

THIRD ANGLE PROJECTION

WEIGHT **.85 LB**

**624EN222-6**  
 DRAWING NUMBER  
 ISSUE **X**  
 3  
 REVISIONS  
 A PR17591  
 18 JUN 58  
 B 172187-0  
 18 MAY 54  
 CHECK  
 23 AUG 59  
 DRAWN  
 T J O 15 AUG 89  
 PO-2265-1-B