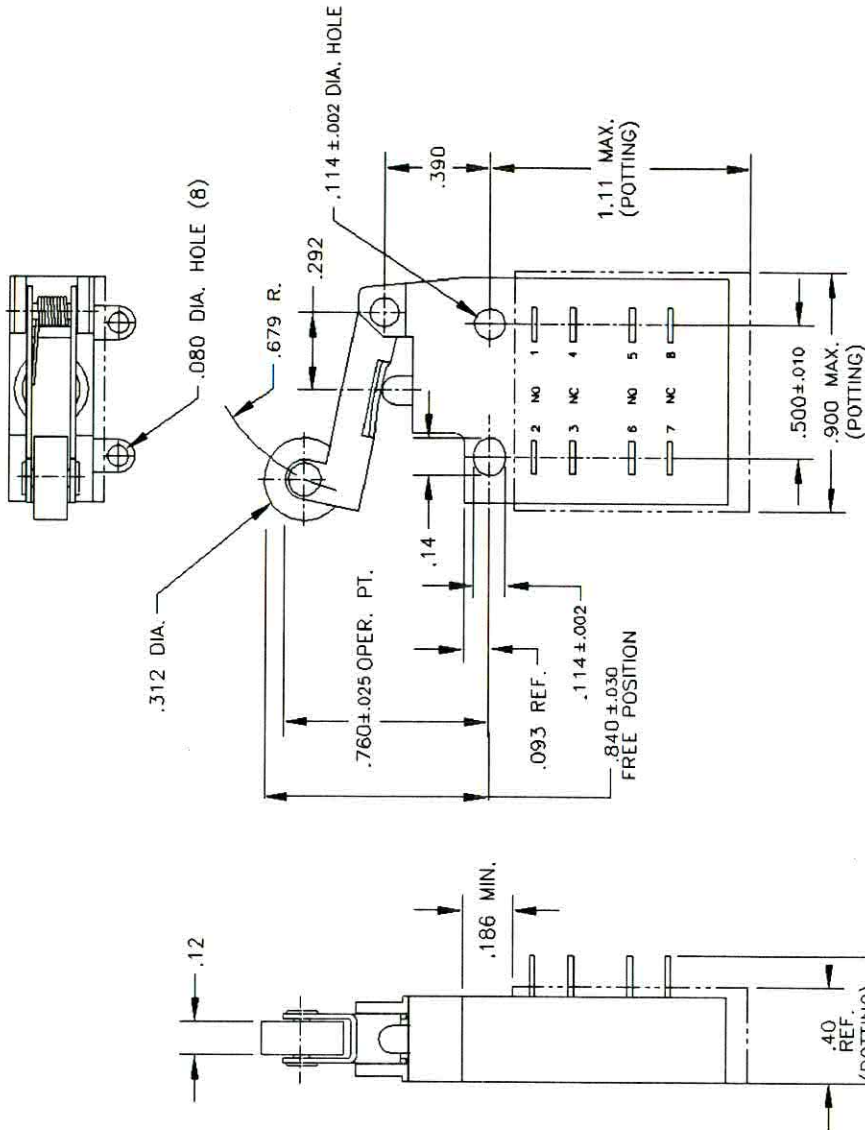
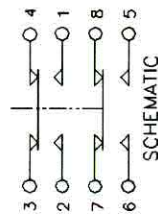


CHARACTERISTICS:

- CONTACT ARRANGEMENT DPDT-DB
- OVERTRAVEL .135 MAX.
- OPERATING FORCE SEE NOTE 4
- RELEASE FORCE 16 OZ. MAX.
- MOVEMENT DIFFERENTIAL 4 OZ. MIN.
- ELECTRICAL RATING (EACH POLE, @ SEA LEVEL) .058 MAX.
- FORM XX OR YY 8A, 28VDC RES.
- FORM ZZ 7.5A, 28VDC IND.
- 5A, 125/250 VAC
- 5A, 28VDC IND.

- NOTES:**
1. TEMP. RANGE -65°F. TO 185°F.
 2. MECH./ELEC. ENDURANCE 60,000 CYCLES MIN.
 3. ENCLOSURE DESIGN: WATERTIGHT
 4. PER MIL-S-8805 DESIGN SYMBOL "3"
 1. OVERTRAVEL: .040 MIN. @ .735 OPER. PT.
 - .100 MIN. @ .785 OPER. PT.

5. SWITCH MARKING:
ITW PART NO.
CUSTOMER PART NO.
5930-00-2750466
MFG. DATE CODE
5. SWITCH POTTED PER TM 235



REVISIONS			
REV	DESCRIPTION	DATE	APPROVED
H	REV. & REDRAWN ECN27333	6-16-98	
J	ECN 27484	2-2-99	JS
K	REVISED B/M PER E.C.N. 27866.	7 MAY 2002	JE

ITW Switches AN ILLINOIS TOOL WORKS COMPANY		DWG TITLE T-65 ENVIRONMENT FREE SWITCH	SIZE DWG NO. 65-330062	REV K
TOLERANCES UNLESS OTHERWISE NOTED 3 PLACE DECIMAL ±.005 2 PLACE DECIMAL ±.01 ANGULAR ± 1/2°		DATE 6-16-98 DRAWN RCT/ML CHK MJS REF: 065\330062	SCALE 2 : 1	SHEET 1 OF 1
REF: NORTHPROP CORP. 14-74902-6		DATE 6-16-98 APP'D EJB SUPV MJD	ENVIRONMENT FREE SWITCH	REV K

THIS IS A KEYED PRINT