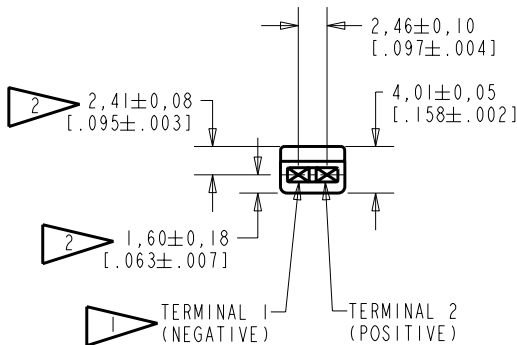
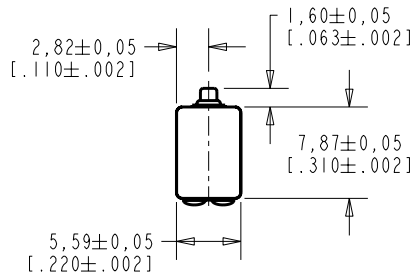


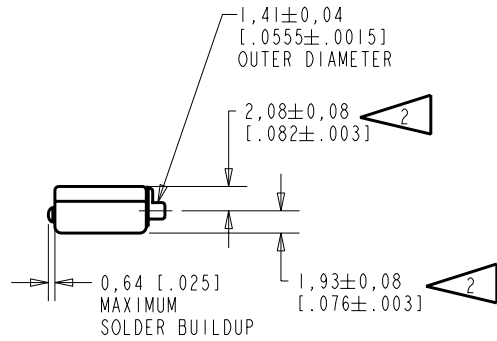
**BK-23134-000**  
SHT 1.1

NOTES:

- 1 A POSITIVE GOING VOLTAGE AT TERMINAL 2, RELATIVE TO TERMINAL 1, CAUSES A DECREASE IN PRESSURE AT THE SOUND OUTLET.
- 2 LOCATED FROM TWO SURFACES FOR CUSTOMER CONVENIENCE. ONLY APPLICABLE FROM ONE SURFACE, NOT TO BE USED TOGETHER. HORIZONTAL LOCATION FOR TERMINAL CENTERED TO  $\pm 0,17$  [.007].



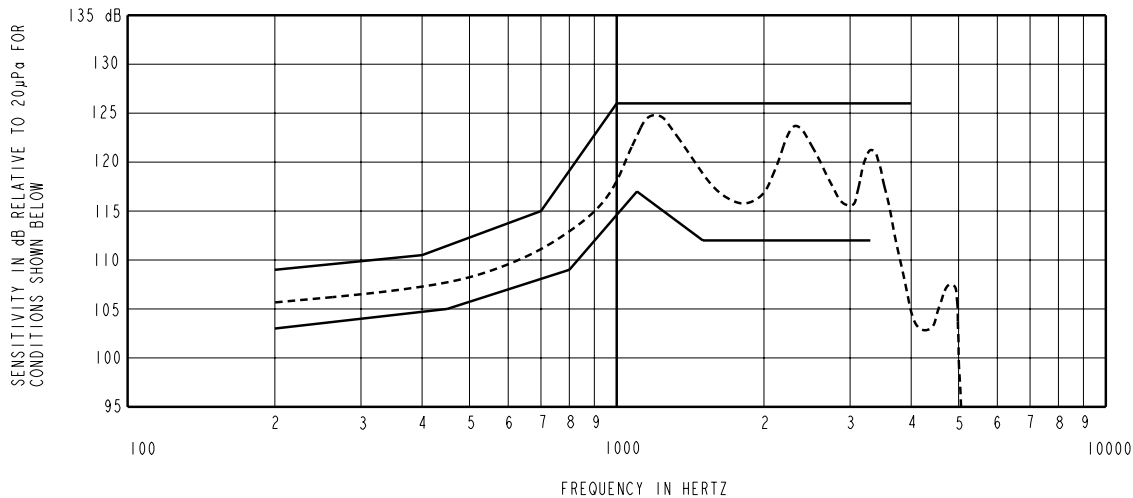
NOMINAL WEIGHT .66 GRAM DIMENSIONS IN MILLIMETERS [INCHES]



**KNOWLES ELECTRONICS**  
ITASCA, ILLINOIS U.S.A.

| Revision             | C.O. #    | Implementation Date | RELEASE LEVEL | REVISION |
|----------------------|-----------|---------------------|---------------|----------|
| B                    | C10106382 | 8-23-07             | Released      | B        |
| A                    | C10103338 | 11-4-05             |               |          |
| SCALE: 2:1           |           |                     | DR. BY        | DATE     |
| DO NOT SCALE DRAWING |           |                     | MMM           | 11-4-05  |
| TITLE: RECEIVER      |           |                     | CK. BY        | DATE     |
| OUTLINE DRAWING      |           |                     | GJP           | 11-8-05  |
| BK-23134-000         |           |                     | APP. BY       | DATE     |
| SHT 1.1              |           |                     | GJP           | 11-8-05  |

KE111ASTZE.FRM Rev: B



NOTES:

1. MEASUREMENTS MADE USING 27,9mm (1.100") X 1,4mm (.053") ID+10,2mm(.400")x 1,8mm(.070") ID + 23,1mm(.201") x 3,0mm(.118") ID TUBE CONNECTED TO 2CC COUPLER (T1278 AND B & K DB0138)

2. SENSITIVITY

| FREQUENCY | MIN.  | MAX.  |
|-----------|-------|-------|
| 200       | 103.0 | 109.0 |
| 400       | ---   | 110.5 |
| 450       | 105.0 | ---   |
| 700       | ---   | 115.0 |
| 800       | 109.0 | ---   |
| 1000      | ---   | 126.0 |
| 1100      | 117.0 | ---   |
| 1500      | 112.0 | 126.0 |
| 3300      | 112.0 | ---   |
| 4000      | ---   | 126.0 |

- 3. RESPONSE, IMPEDANCE, AND DISTORTION MEASUREMENTS MADE USING THE ELECTRICAL TEST CONDITIONS SHOWN BELOW.
- 4. ELECTRICAL SOURCE IMPEDANCE MUST BE GREATER THAN 20 TIMES 1KHz IMPEDANCE FOR TEST CONDITIONS BELOW.
- 5. INDIVIDUAL SPECIFICATIONS.

| PORT LOCATION | IMPEDANCE OHMS ±15% |       | DCR @20°C OHMS ±10% | DISTORTION |         | ELECTRICAL TEST CONDITIONS |       |
|---------------|---------------------|-------|---------------------|------------|---------|----------------------------|-------|
|               | 1KHz                | 500Hz |                     | MAX. %     | FREQ Hz | AC mA RMS                  | DC mA |
| I2S           | 730                 | 285   | 100                 | 10         | 500     | 1.0                        | 0.0   |

| Revision | C.O. #    | Implementation Date | RELEASE LEVEL | REVISION |
|----------|-----------|---------------------|---------------|----------|
| B        | C10106382 | 8-23-07             | Released      | B        |
| A        | C10103338 | 11-4-05             |               |          |

**KNOWLES ELECTRONICS**  
ITASCA, ILLINOIS U.S.A.

|  |  |         |         |
|--|--|---------|---------|
| WHEN TEST LIMITS ARE USED TO ESTABLISH INCOMING INSPECTION ACCEPTANCE/REJECTION CRITERIA, CORRELATION OF TEST EQUIPMENT WITH KNOWLES IS ALSO REQUIRED FOR ELIMINATION OF EQUIPMENT AND TEST METHOD VARIATION |  | DR. BY  | DATE    |
| TITLE: <b>RECEIVER</b><br>PERFORMANCE SPECIFICATION  |  | MM      | 11-4-05 |
|  |  | GJP     | 11-8-05 |
| BK-23134-000<br>SHT 2.1  |  | APP. BY | DATE    |
|  |  | GJP     | 11-8-05 |