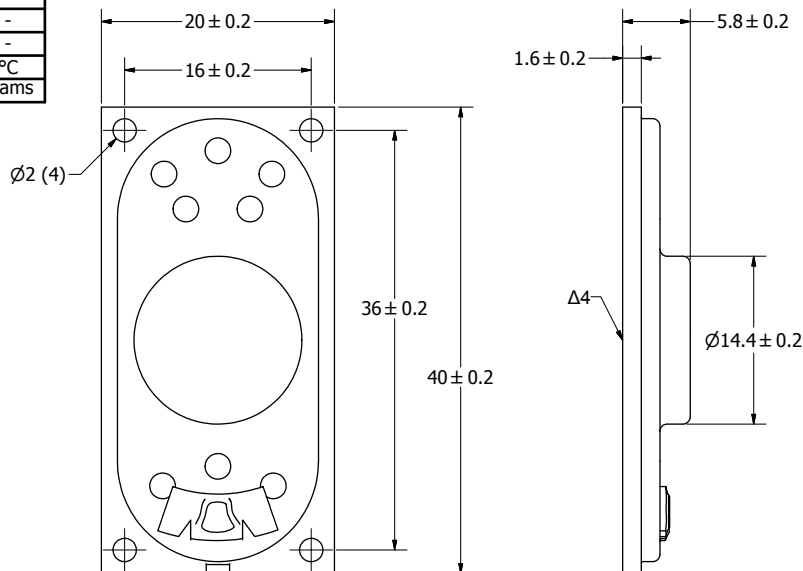


SPECIFICATIONS		
PARAMETERS	VALUES	UNITS
RATED INPUT POWER	1.5	W
MAX INPUT POWER	3	W
IMPEDANCE	$8 \pm 15\%$	OHM
OUTPUT SPL @ 1W/1M (AT 1.0, 1.2, 1.5, 2.0 kHz)	83 ± 3	dBa
DISTORTION (MAX.)	5%	-
RESONANT FREQUENCY	$450 \pm 20\%$	Hz
FREQUENCY RANGE	450 ~ 20000	Hz
HOUSING MATERIAL	METAL	-
CONE MATERIAL	TREATED CLOTH	-
MAGNET MATERIAL	N35	-
OPERATING TEMPERATURE	-10 ~ +50	°C
WEIGHT	7.6	grams


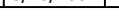
THIS DOCUMENT CONTAINS DATA PROPRIETARY TO PROJECTS UNLIMITED, INC. ANY USE OR REPRODUCTION, IN ANY FORM, WITHOUT PRIOR WRITTEN PERMISSION OF PROJECTS UNLIMITED, INC. IS PROHIBITED.
©2003, Projects Unlimited Inc.

REVISION HISTORY			
LTR	DESCRIPTION	DATE	APPROVED
-	RELEASED FROM ENGINEERING	5/16/2007	
A	REVISED TO INVENTOR 3-D DRIVING TEMPLATE	10/07/2008	B.R.



NOTES:

1. ALL DIMENSIONS ARE IN MILLIMETERS.
2. SPECIFICATIONS SUBJECT TO CHANGE OR WITHDRAWAL WITHOUT NOTICE.
3. THIS PART IS RoHS 2002/95/EC COMPLIANT.
- Δ4. CONE HAS BEEN TREATED FOR WATER RESISTANCE.

UNLESS OTHERWISE SPECIFIED: DIMENSIONS ARE IN MILLIMETERS, TOLERANCES ARE ± 0.5 AND ANGLES ARE $\pm 3^\circ$.	SIZE	Designed by	Date	Checked by	Date	Approved by	Date	Drawn Date		
		J.D.	5/16/2007	E.P.	5/16/2007	B.R.	5/16/2007	10/7/2008		
	A3			AS04008CO-4-WR-R						
				Speaker					Edition	Sheet
									-	1 / 1
AS04008CO-4-WR-R.idw										