

Features

- Rectified Type Coil
- Clear, Tough Polycarbonate Plastic Cover
- Jones Plug Terminals
- Suitable for Domestic Switching of Tungsten Lamp Loads of 1000 Watts @ 120 VAC
- Polarizing Pin



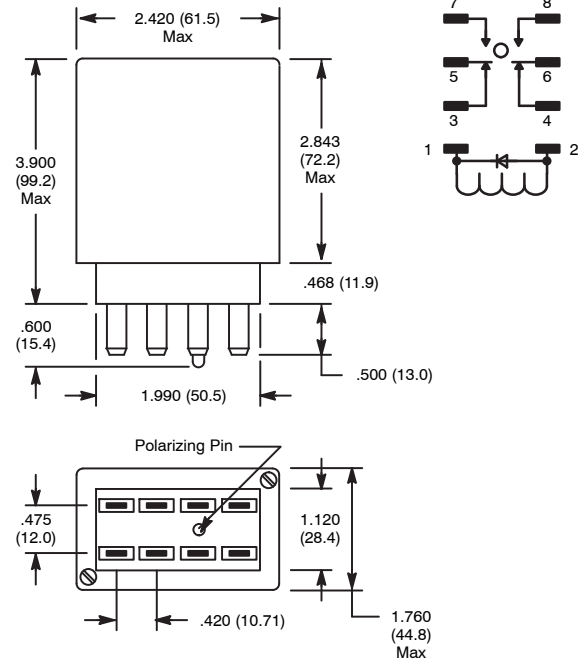
R18 Series



Enclosed Style, 20 Amp AC Power DPDT Relay designed to Switch Tungsten Lamp Loads for the Traffic Control Industry.

D13

DPDT, 2 Form "C"



Electrical Specifications

Contact

Ratings: 20 Amp, 28VDC (Resistive)
 1 1/2 HP, 120VAC (Motor); 2 HP, 240VAC (Motor)
 20 Amp, 120VAC (Tungsten Lamp)
 10 Amp, 240VAC (Tungsten Lamp)
Contact Arrangement: DPDT
Contact Material: 3/8" dia Silver alloy

Coil

Coil Voltages: See Chart
Pull-in Voltage: 70% of nominal AC @ 20°C or less
Dropout Voltage: 10% of nominal voltage or more
Power: 4.0 VA nominal

Insulation Characteristics

Dielectric Strength

Across Open Contacts: 500 VRMS
Contact To Coil: 1500 VRMS
Contact to Frame: 1500 VRMS

Environmental Characteristics

Operating: -40°C to +84°C

Life Expectancy

Mechanical: 5 million operations min (No Load)
Electrical: 200,000 operations min. @ 20 Amps Tungsten, 120VAC

Weight

Std: 7.2 ozs. (204.7 grams) approx.

AC OPERATED

NTE Type No.	Nom. Voltage	Contact Arr.	Nom. Power	Max. Contact Cur. @ 28VDC or 120VAC	Diag No.
R18-11A20-120	120VAC	DPDT	4.0VA	20A	D13

ACCESSORIES

MOUNTING STYLES	DESCRIPTION	NTE TYPE NO.
PANEL MOUNT	8-PIN JONES PLUG	R95-112