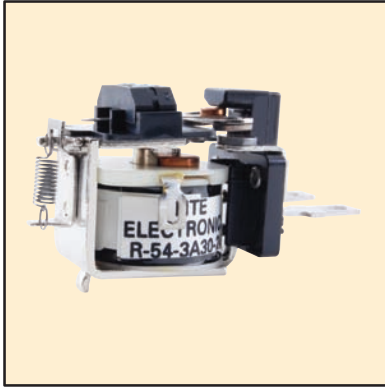


Features

- Industry Standard Package
- Quick Connect and/or Solder Terminals
- 6-32 THD Mounting Hole + Locating Pin
- Long Life Hinge Pin Armature

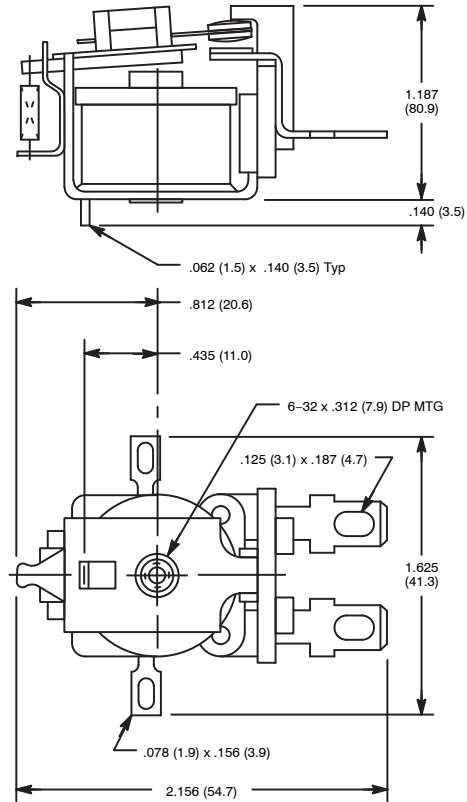


R54 Series



**Heavy Duty 30 Amp, SPST-NO-DM
AC & DC Relays for Small Motor
Controls, Industrial Controls.**

D25



AC OPERATED						
NTE Type No.	Nom. Volt.	Contact Arr.	Coil Res. Ohms (Typ)	Nom. Power	Max. Contact Cur. @ 28VDC or 120VAC	Diag No.
R54-3A30-24	24VAC	SPST-NO DM	—	3VA	30A	D25
R54-3A30-120	120VAC	SPST-NO DM	—	3VA	30A	D25
R54-3A30-240	240VAC	SPST-NO DM	—	3VA	30A	D25
DC OPERATED						
R54-3D30-12	12VDC	SPST-NO DM	100	1.5W	30A	D25
R54-3D30-24	24VDC	SPST-NO DM	400	1.5W	30A	D25
R54-3D30-110	110VDC	SPST-NO DM	8000	1.5W	30A	D25

Electrical Specifications

Contact

Rating: 30 Amps up to 300 VAC or 28 VDC resistive load, 5 Amps @ 600 VAC resistive. 1 HP at 120 thru 600 VAC motor load. 10 Amps at 120 VAC tungsten load.

Material: Silver cadmium oxide gold flashed 1/4" dia.

Coil

Coil Voltages: See Chart

Resistance: DC coil resistance to 40,000 ohms

Operational Characteristics

Timing Value: **Operate Time** 18 mS max

Release Time 30 mS max

Insulation Characteristics

Dielectric Strength: 1000 VAC RMS between open contacts
3000 VAC RMS between all other mutually insulated conductive materials

Environmental Characteristics

Operating: -30°C to +50°C (AC), -30°C to +65°C (DC)

Weight

Std: 3 oz (85 grams)