

THIS DRAWING IS UNPUBLISHED.

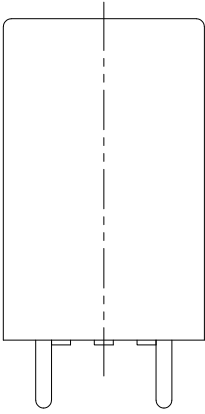
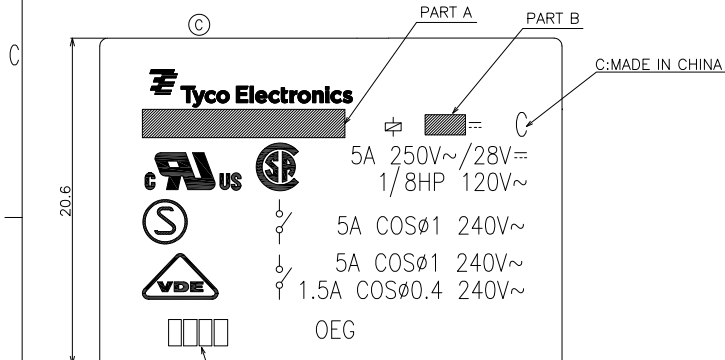
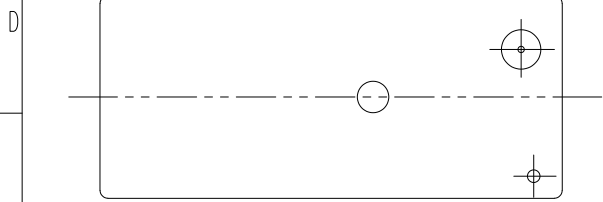
RELEASED FOR PUBLICATION

© COPYRIGHT

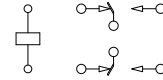
ALL RIGHTS RESERVED.

LOC HB DIST

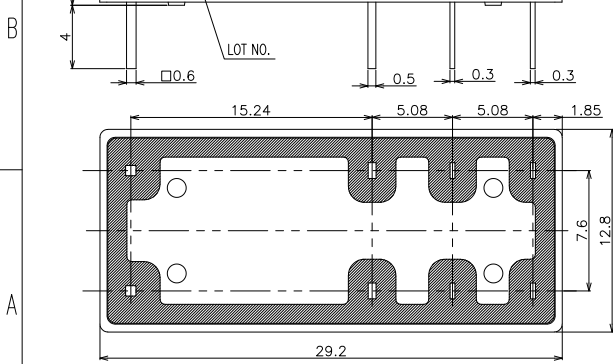
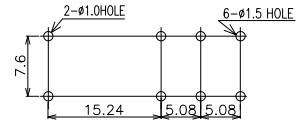
REVISIONS				
P	LTR	DESCRIPTION	DATE	DWN APVD
	A1	REVISED PER ECO-11-005140	29MAR11	RK HMR



CONNECTION DIAGRAM (BOTTOM VIEW)



DRILLING DIAGRAM(2/1) (BOTTOM VIEW)



DWN MACHAO, LIN		TE Connectivity	
CHK BANGHUA, YU			
APVD SUNNY, ZHANG		NAME	
PRODUCT SPEC -		OMI CUSTOMER DRAWING	
APPLICATION SPEC -		SIZE A3	CAGE CODE 00779
WEIGHT -		DRAWING NO. 5-1440001-2	
MATERIAL SEE MATERIAL TABLE		RESTRICTED TO	
FINISH -		SCALE 4:1 SHEET 1 OF 2 REV A1	
DIMENSIONS: mm		CUSTOMER DRAWING	
TOLERANCES UNLESS OTHERWISE SPECIFIED:			
0 PLC ±			
1 PLC ±			
2 PLC ±			
3 PLC ±			
4 PLC ±			

4

3

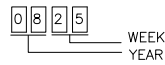
2

1

THIS DRAWING IS UNPUBLISHED. RELEASED FOR PUBLICATION  
 © COPYRIGHT ALL RIGHTS RESERVED.

LOC		REVISIONS						
HB	DIST	P	LTR	DESCRIPTION	ECN	DATE	DWN	APVD

NOTES:  
 1. LOT NO. SYSTEM AS FOLLOWING:



2. GENERAL TOLERANCE AS FOLLOWING:

TOLERANCE	
0~0.99mm	±0.1
1mm~2.99mm	±0.2
3mm MIN.	±0.3

3. TERMINAL DIMENSION IS NOT INCLUDING SOLDER TIP.

PART NO	DESCRIPTION	PART B	PART A
7-1440001-2	OMI-SS-248D	48V	OMI-SS-248D
1461331-1	OMI-SH-248D	48V	OMI-SH-248D
7-1440001-1	OMI-SS-236D	36V	OMI-SS-236D
1-1461331-2	OMI-SH-224D	24V	OMI-SH-224D
3-1440001-2	OMI-SH-224D	24V	OMI-SH-224D
6-1440001-4	OMI-SS-224D	24V	OMI-SS-224D
3-1440001-1	OMI-SH-218D	18V	OMI-SH-218D
1-1461331-0	OMI-SH-212D	12V	OMI-SH-212D
2-1440001-4	OMI-SH-212D	12V	OMI-SH-212D
5-1440001-3	OMI-SS-212D	12V	OMI-SS-212D
5-1440001-2	OMI-SS-212D	12V	OMI-SS-212D
1461331-7	OMI-SH-209D	9V	OMI-SH-209D
2-1440001-3	OMI-SH-209D	9V	OMI-SH-209D
4-1440001-9	OMI-SS-209D	9V	OMI-SS-209D
2-1440001-0	OMI-SH-206D	6V	OMI-SH-206D
4-1440001-4	OMI-SS-206D	6V	OMI-SS-206D
1461331-3	OMI-SH-205D	5V	OMI-SH-205D
1-1440001-7	OMI-SH-205D	5V	OMI-SH-205D
4-1440001-1	OMI-SS-205D	5V	OMI-SS-205D
1721031-1	OMI-SS-203D	3V	OMI-SS-203D

RELAY TYPE

PART NO	DESCRIPTION	PART B	PART A
7-1440001-4	OMI-SS-248L	48V	OMI-SS-248L
1461331-2	OMI-SH-248L	48V	OMI-SH-248L
3-1440001-7	OMI-SH-248L	48V	OMI-SH-248L
3-1440001-4	OMI-SH-224L	24V	OMI-SH-224L
3-1440001-3	OMI-SH-224L	24V	OMI-SH-224L
6-1440001-7	OMI-SS-224L	24V	OMI-SS-224L
6-1440001-1	OMI-SS-215L	15V	OMI-SS-215L
2-1440001-7	OMI-SH-212L	12V	OMI-SH-212L
1461012-1	OMI-SH-212L	12V	OMI-SH-212L
5-1440001-7	OMI-SS-212L	12V	OMI-SS-212L
1461248-1	OMI-SH-209L	9V	OMI-SH-209L
5-1440001-1	OMI-SS-209L	9V	OMI-SS-209L
5-1440001-0	OMI-SS-209L	9V	OMI-SS-209L
2-1440001-1	OMI-SH-206L	6V	OMI-SH-206L
4-1440001-6	OMI-SS-206L	6V	OMI-SS-206L
7-1440004-8	OMI-SH-205L	5V	OMI-SH-205L
4-1440001-2	OMI-SS-205L	5V	OMI-SS-205L
1731031-2	OMI-SS-203L	3V	OMI-SS-203L

RELAY TYPE

	UV RESIN	UV SEAL	ITEM	
	EPOXY RESIN	SEAL	17	
	—	TAPE	15	
UL94 V-0	PBT	CASE	14	
CLASS E	UEW	MAGNETIC WIRE	13	
UL94 V-0	PET	BASE	12	
UL94 V-0	PBT	BOBBIN	11	
	SOLDER DIP	CP WIRE	10	
UL94 V-0	PPS	CARD	9	
	Ag ALLOY	MOVABLE CONTACT	8	
	Ag ALLOY	STATIONARY CONTACT	7	
	Cu ALLOY	HINGE SPRING	6	
	SOLDER DIP	Cu ALLOY	STATIONARY TERMINAL	5
	SOLDER DIP	Cu ALLOY	MOVABLE SPRING	4
	STEEL	CORE	3	
	STEEL	ARMATURE	2	
	STEEL	YOKE	1	

INCOMBUSTIBILITY TREATMENT MATERIAL DESCRIPTION ITEM

DIMENSIONS: mm 	TOLERANCES UNLESS OTHERWISE SPECIFIED: 0 PLC ± 1 PLC ± 2 PLC ± 3 PLC ± 4 PLC ±	DWN	TE Connectivity			
		CHK				NAME
MATERIAL SEE MATERIAL TABLE	FINISH —	APVD	SIZE	CAGE CODE	DRAWING NO	RESTRICTED TO
		PRODUCT SPEC	A3	00779	5-1440001-2	—
		APPLICATION SPEC	WEIGHT	CUSTOMER DRAWING		SCALE 4:1 SHEET 2 OF 2 REV A1