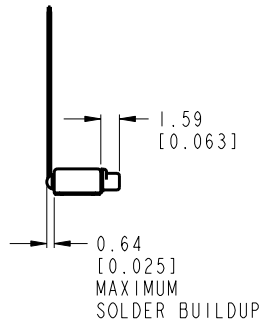
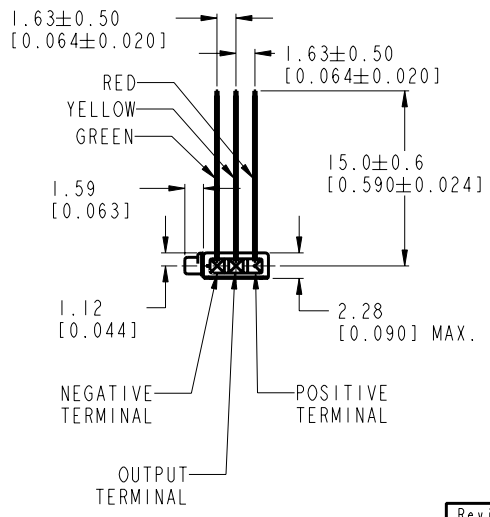
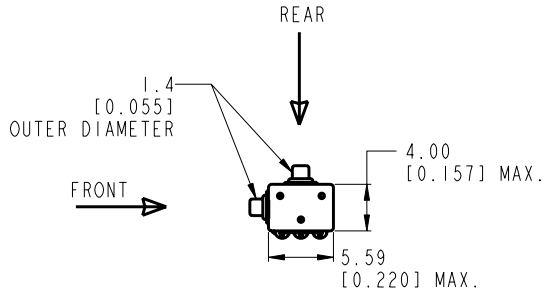


EL-29924-P25
SHT 1.1



NOMINAL WEIGHT
.13 GRAM

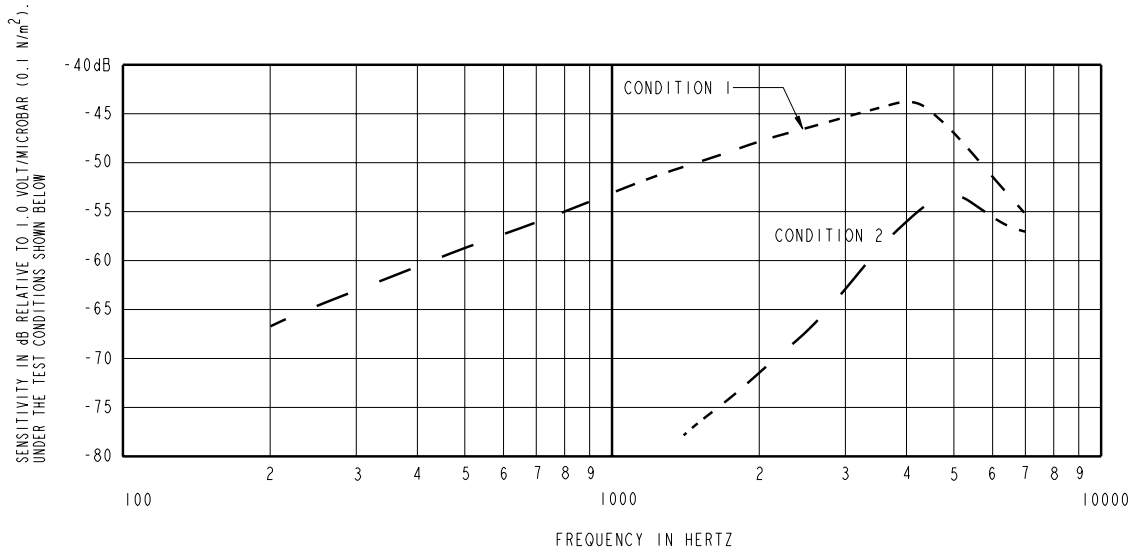
DIMENSIONS IN MILLIMETERS [INCHES]

Revision	C.O. #	Implementation Date	RELEASE LEVEL	REVISION
			Released	A
A	MI0100789	09/28/05		

KNOWLES ELECTRONICS
ITASCA, ILLINOIS U.S.A.

SCALE: 2:1		DR. BY: DMS	DATE: 09/15/05
DO NOT SCALE DRAWING			
TITLE: MICROPHONE ASSEMBLY		CK. BY: GJP	DATE: 09/28/05
OUTLINE DRAWING		APP. BY: GJP	DATE: 09/28/05
EL-29924-P25		SHT 1.1	

KE111ASTZE.FRM Rev: B

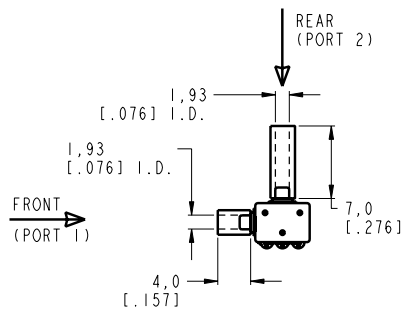


CONDITION 1 SENSITIVITY			DEVICE CONFORMITY		
FREQUENCY	MIN.	NOM.	RANGE OF DEVIATION FROM 1 kHz		
		MAX.	CONDITION 1	CONDITION 2	
300	---	-63.0	-8.5	-11.5	---
1000	-55.0	-53.0	0.0	0.0	-20.0 MIN.
3100-5100	---	-44.5	+3.5	+13.5	---

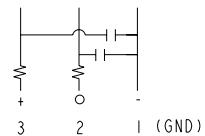
NOTES:

1. MICROPHONE TO BE FUNCTIONAL WITH 10VDC SUPPLY.
2. TYPICAL SENSITIVITY TO HUMIDITY AT 1000 Hz IS 0.03 dB/%RH.
3. SENSITIVITY AND NOISE VALUES INDICATED ON THIS SPECIFICATION ARE VALID AT 50% HUMIDITY.
4. CASE CONNECTED TO NEGATIVE TERMINAL.

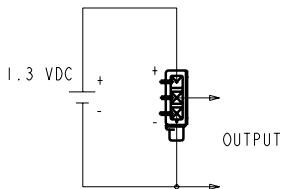
TEST CONDITIONS WITH TUBING AND SIGNALS DESCRIBED BELOW:
DIMENSIONS IN MILLEMMETERS [INCHES].



CAPACITANCE PROBE POINTS



CAPACITANCE ±50%		
OUTPUT TO NEGATIVE (2-1)	OUTPUT TO POSITIVE (2-3)	POSITIVE TO NEGATIVE (3-1)
58pF	N/A	58pF



SIGNAL "A" IS A REFERENCE SIGNAL OF 1.0 MICROBAR.
SIGNAL "B" IS A PROBE SIGNAL DELAYED 56.8 MICROSECONDS WITH RESPECT TO SIGNAL "A" AND HAVING 0.981 TIMES THE AMPLITUDE.

FOR CONDITION 1

SIGNAL "A" IS APPLIED TO PORT 1
SIGNAL "B" IS APPLIED TO PORT 2

FOR CONDITION 2

SIGNAL "A" IS APPLIED TO PORT 2
SIGNAL "B" IS APPLIED TO PORT 1

Revision	C.O. #	Implementation Date	RELEASE LEVEL	REVISION
A	MI0100789	09/28/05	Released	A

KNOWLES ELECTRONICS
ITASCA, ILLINOIS U.S.A.

WHEN TEST LIMITS ARE USED TO ESTABLISH INCOMING INSPECTION ACCEPTANCE/REJECTION CRITERIA, CORRELATION OF TEST EQUIPMENT WITH KNOWLES IS ALSO REQUIRED FOR ELIMINATION OF EQUIPMENT AND TEST METHOD VARIATION

TITLE: MICROPHONE ASSEMBLY EL-29924-P25

PERFORMANCE SPECIFICATION SHT 2.1

DR. BY	DATE
DMS	09/15/05
CK. BY	DATE
GJP	09/28/05
APP. BY	DATE
GJP	09/28/05