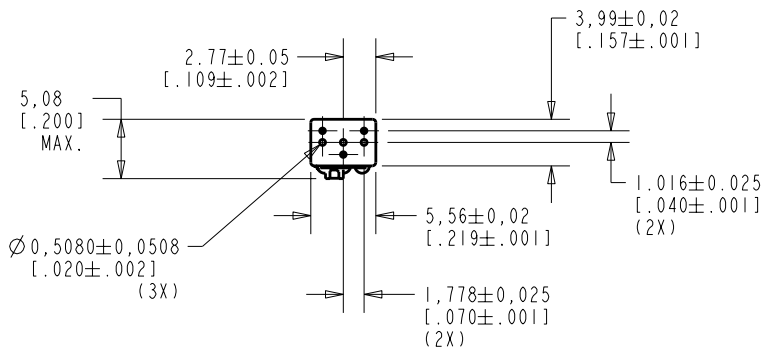
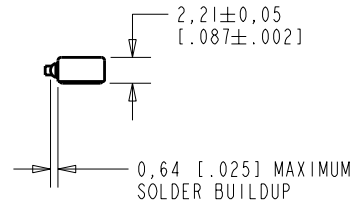
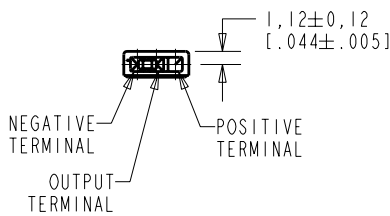


**NR-25994-D63**  
SHT 1.1

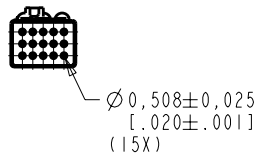


**NOTE:**

1. INCREASED PRESSURE AT THE SOUND INLET CAUSES A POSITIVE GOING VOLTAGE TO APPEAR AT THE OUTPUT TERMINAL, RELATIVE TO THE NEGATIVE TERMINAL.



NOMINAL WEIGHT  
.13 GRAM

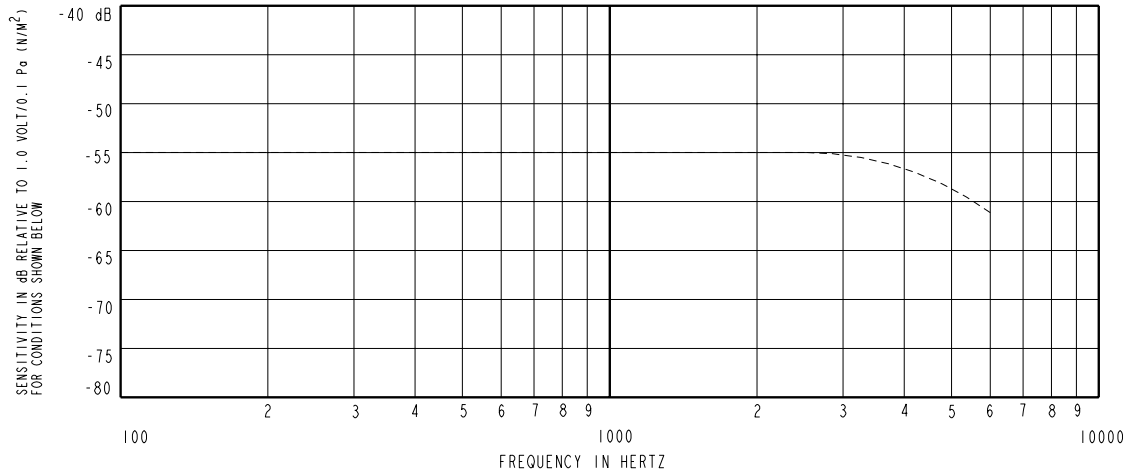


DIMENSIONS IN MILLIMETERS [INCHES]

**KNOWLES ELECTRONICS**  
ITASCA, ILLINOIS U.S.A.

Revision	C.O. #	Implementation Date	RELEASE LEVEL	REVISION
A	M10101748	12-13-07	Active	A
SCALE: 2:1			DR. BY: SDZ	DATE: 12-13-07
DO NOT SCALE DRAWING				
TITLE: MICROPHONE		NR-25994-D63		GJP 1-02-08
OUTLINE DRAWING		SHT 1.1		APP. BY: GJP DATE: 1-02-08

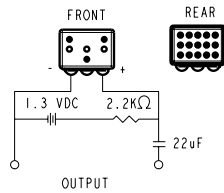
HE111ASIZE.FRM Rev: B



FREQUENCY	SENSITIVITY			DEVICE CONFORMITY	
	MIN.	NOM.	MAX.	RANGE OF DEVIATION FROM 1 KHz	
100	---	-55.0	---	-2.0	+2.0
1000	-59.0	-55.0	-51.0	0.0	0.0
4000	---	-57.0	---	-5.0	+1.0

NOTES:

- CASE CONNECTED TO NEGATIVE TERMINAL.
- MICROPHONE TO BE FUNCTIONAL WITH 10 VDC SUPPLY.
- SENSITIVITY VALUES INDICATED ON THIS SPECIFICATION ARE VALID AT 50% HUMIDITY.
- PRESSURE DIFFERENCE SENSITIVITY TESTED WITH REAR SOUND PORT SEALED TO AIR VOLUME OF AT LEAST 0.5 CC.



PORT LOCATION	DC SUPPLY	AMPLIFIER CURRENT DRAIN	OUTPUT IMPEDANCE OHMS		
			MIN.	NOM.	MAX.
KA, JA	1.3V	300µA MAX.	1000	2000	3000

Revision	C.O. #	Implementation Date	RELEASE LEVEL	REVISION
A	MI0101748	12-13-07	Active	A

WHEN TEST LIMITS ARE USED TO ESTABLISH INCOMING INSPECTION ACCEPTANCE/REJECTION CRITERIA, CORRELATION OF TEST EQUIPMENT WITH KNOWLES IS ALSO REQUIRED FOR ELIMINATION OF EQUIPMENT AND TEST METHOD VARIATION		DR. BY	DATE
		SDZ	12-13-07
TITLE: MICROPHONE		CK. BY	DATE
PERFORMANCE SPECIFICATION		GJP	1-02-08
NR-25994-D63		APP. BY	DATE
SHT 2.1		GJP	1-02-08

**KNOWLES ELECTRONICS**  
ITASCA, ILLINOIS U.S.A.